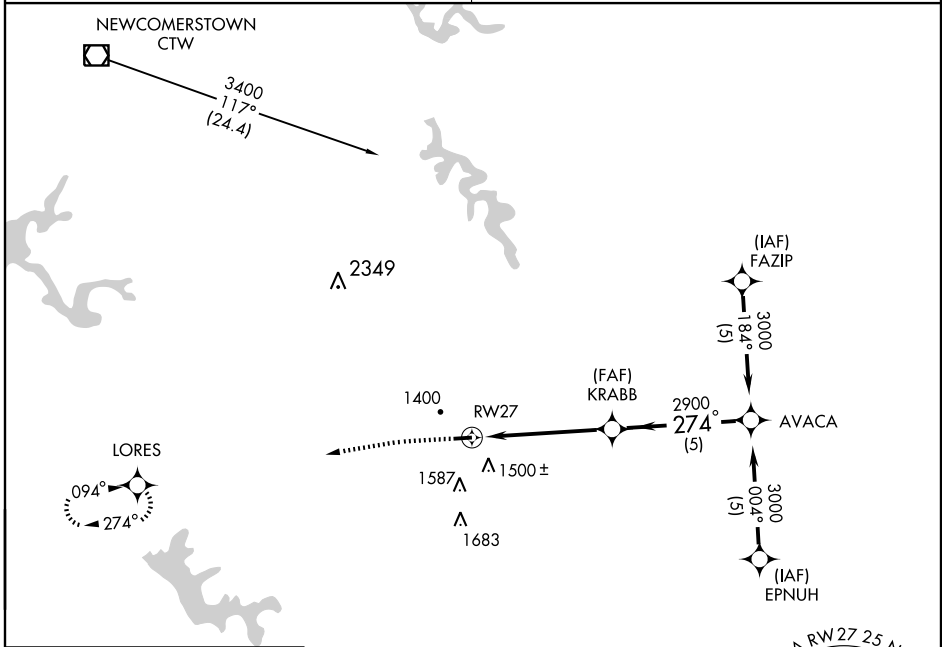


GPS RWY 27
BARNESVILLE-BRADFIELD (6G5)

APP CRS 274°	Rwy Idg 4004
	TDZE 1312
	Apt Elev 1312

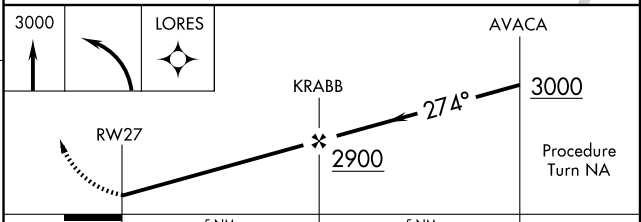
<p>▼ Use Wheeling, WV altimeter setting.</p> <p>▲ NA</p>	<p>MISSED APPROACH: Climb to 3000, then left turn direct LORES WP and hold.</p>
<p>CLEVELAND CENTER 120.4 257.975</p>	<p>UNICOM 123.0 (CTAF)</p>



EC-2, 22 OCT 2009 to 19 NOV 2009

EC-2, 22 OCT 2009 to 19 NOV 2009

ELEV 1312 Rwy 9 Idg 3704'



CATEGORY	A	B	C	D
S-27	1840-1	528 (600-1)		NA
CIRCLING	1880-1	568 (600-1)		NA

MIRL Rwy 9-27
REIL Rwy 27