

VOR/DME CGI <b>112.9</b> Chan <b>76</b>	APP CRS <b>177°</b>	Rwy Idg TDZE Apt Elev	<b>5502</b> <b>315</b> <b>315</b>
---	------------------------	-----------------------------	---

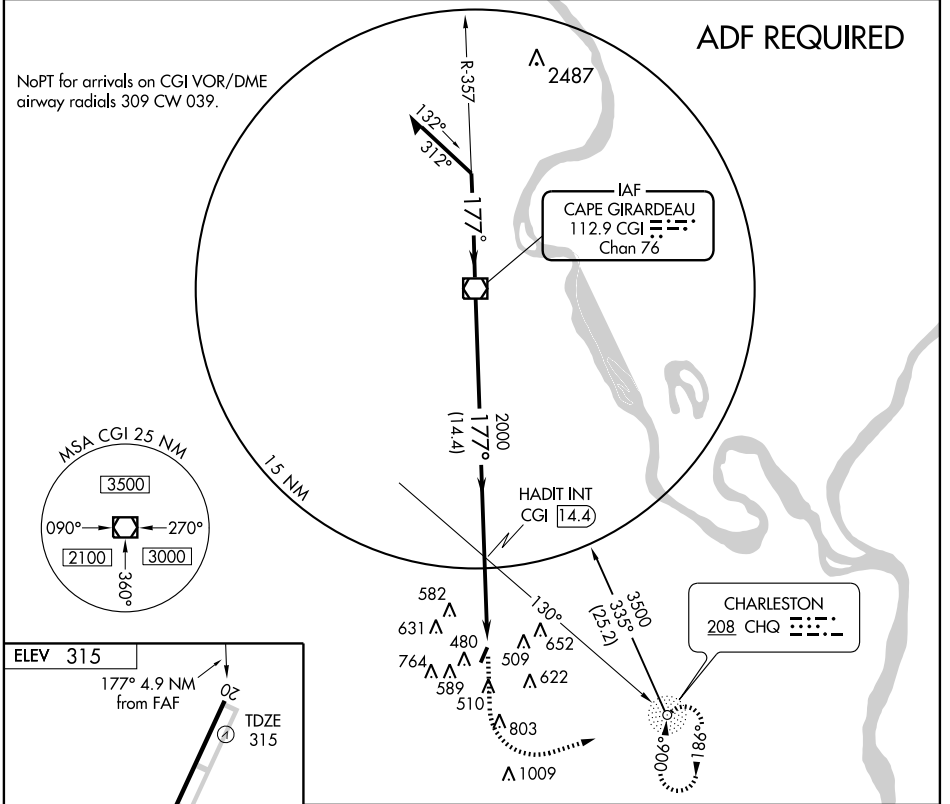
# VOR RWY 20

SIKESTON MEMORIAL MUNI (SIK)

**NA** Use Cape Girardeau altimeter setting.

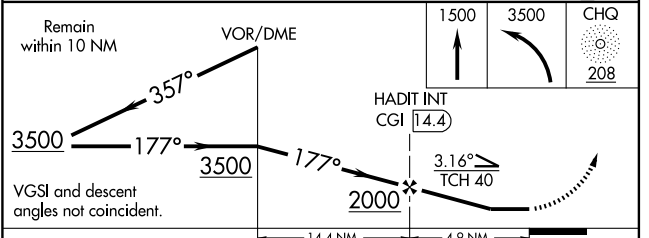
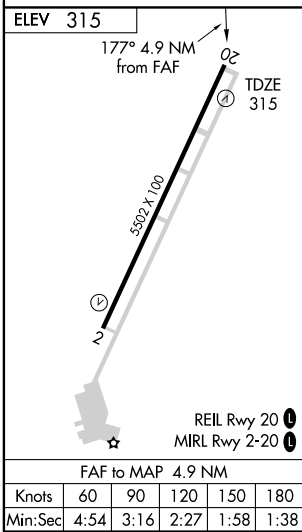
MISSED APPROACH: Climb to 1500 then climbing left turn to 3500 direct CHQ NDB and hold.

AWOS <b>119.175</b>	MEMPHIS CENTER <b>133.65 292.15</b>	UNICOM <b>122.8 (CTAF)</b>
------------------------	--	-------------------------------



NC-3, 22 OCT 2009 to 19 NOV 2009

NC-3, 22 OCT 2009 to 19 NOV 2009



CATEGORY	A	B	C	D
S-20	800-1	485 (500-1)	800-1¼ 485 (500-1¼)	800-1½ 485 (500-1½)
CIRCLING	880-1	565 (600-1)	920-1¾ 605 (700-1¾)	920-2 605 (700-2)