

VORTAC LAN 110.8 Chan 45	APP CRS 216°	Rwy Idg TDZE Apt Elev	3500 891 891
---------------------------------------	------------------------	-----------------------------	---

VOR or GPS RWY 20

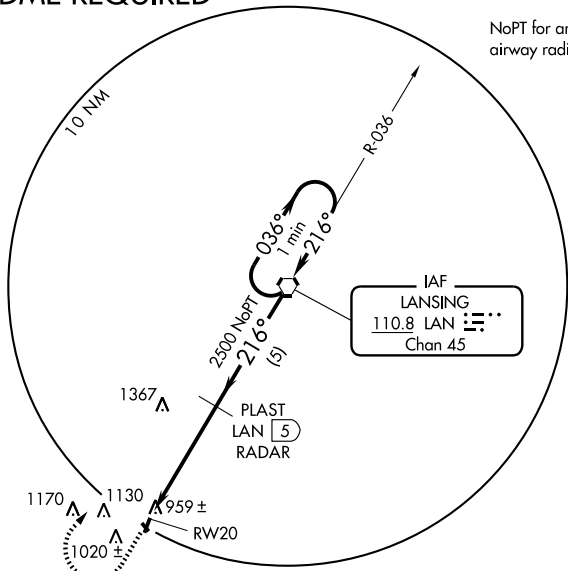
CHARLOTTE / FITCH H. BEACH (F'PK)

<p>▼ Use Lansing altimeter setting.</p> <p>▲ NA</p>	<p>MISSED APPROACH: Climb to 2500 via LAN R-216 then right turn direct LAN VORTAC and hold.</p>
---	---

<p>AWOS-3 118.075</p>	<p>LANSING APP CON 118.65 226.4</p>	<p>UNICOM 123.0 (CTAF) 0</p>
----------------------------------	--	---

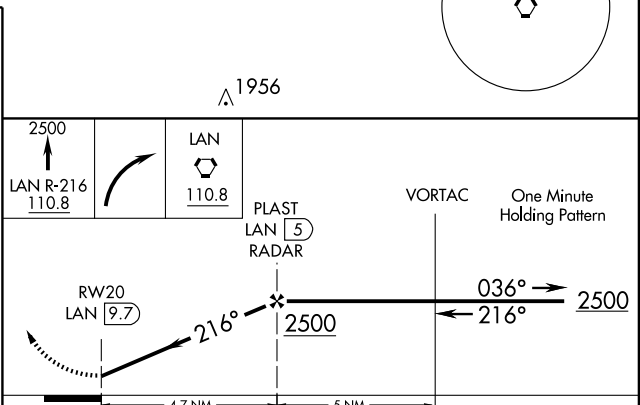
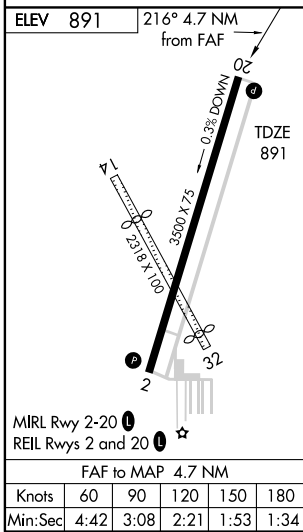
RADAR or DME REQUIRED

NoPT for arrivals on LAN VORTAC
airway radials 324 CW 115.



EC-1, 22 OCT 2009 to 19 NOV 2009

EC-1, 22 OCT 2009 to 19 NOV 2009



CATEGORY	A	B	C	D
S-20	1400-1	509 (600-1)	1400-1½ 509 (600-1½)	NA
CIRCLING	1460-1 569 (600-1)	1520-1 629 (700-1)	1520-1¾ 629 (700-1¾)	NA