

# RNAV (GPS) RWY 22

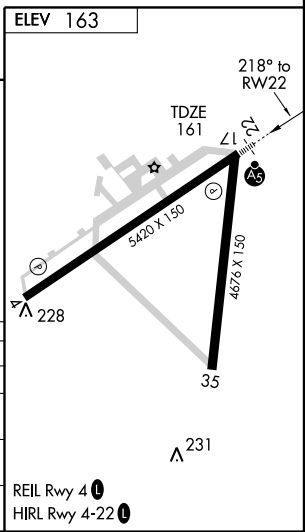
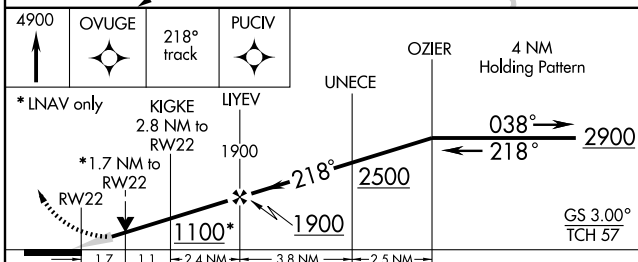
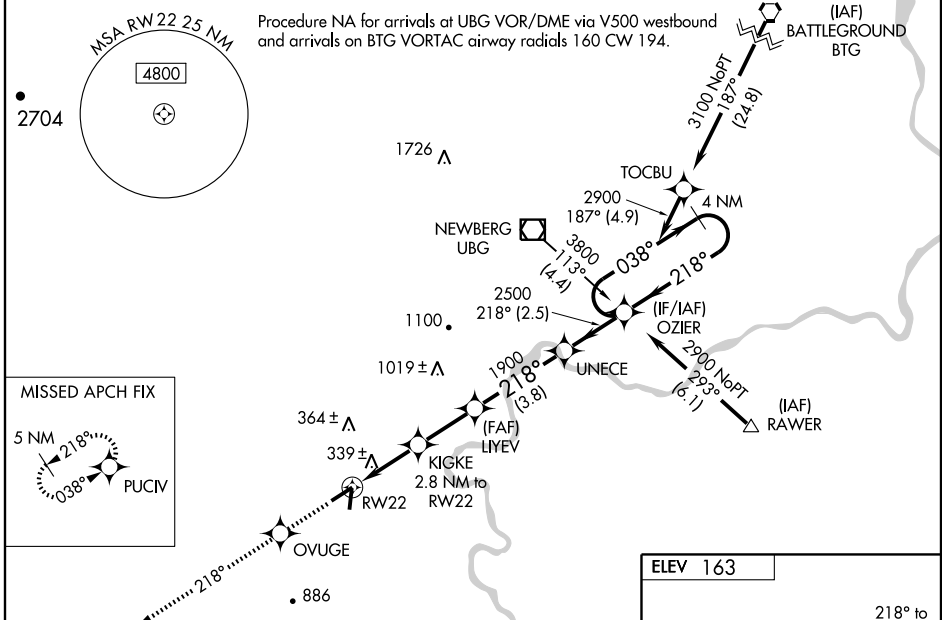
MC MINNVILLE MUNI (MMV)

WAAS CH <b>50309</b> <b>W22A</b>	APP CRS <b>218°</b>	Rwy Idg TDZE <b>161</b> Apt Elev <b>163</b>
--	------------------------	---

**⚠** For inoperative MALSR, increase LPV all Cats. visibility to 1. Baro-VNAV NA when using Aurora State altimeter setting. For uncompensated Baro-VNAV systems, LNAV/VNAV NA below -1.5°C (5°F) or above 48°C (118°F). DME/DME RNP-0.3 NA. For inoperative MALSR when using Aurora State altimeter setting increase LPV visibility all Cats. to 1¼. VDP NA when using Aurora State altimeter setting. When local altimeter setting not received, use Aurora State altimeter setting and increase all DA and MDA 60 feet, increase all visibility ¼ mile.

**MALSR**  
MISSED APPROACH: Climb to 4900 direct OVUGE then via 218° track to PUCIV and hold, continue climb-in-hold to 4900.

ASOS <b>135.675</b>	PORTLAND APP CON <b>126.0 284.6</b> (NORTH)	SEATTLE CENTER <b>125.8 291.7</b> (SOUTH)	McMINNVILLE RADIO <b>122.45</b>	CLNC DEL <b>118.35</b>	UNICOM <b>123.0</b> (CTAF) <b>0</b>
------------------------	--	--	------------------------------------	---------------------------	--



CATEGORY	A	B	C	D
LPV DA	474-½ 313 (400-½)			
LNAV/VNAV DA	633-1¼ 472 (500-1¼)			
LNAV MDA	740-½ 579 (600-½)	740-1 579 (600-1)	740-1¼ 579 (600-1¼)	740-1¼ 579 (600-1¼)
CIRCLING	740-1 577 (600-1)	760-1½ 597 (600-1½)	880-2¼ 717 (800-2¼)	880-2¼ 717 (800-2¼)

NW-1, 22 OCT 2009 to 19 NOV 2009

NW-1, 22 OCT 2009 to 19 NOV 2009