

LOC I-MMV <b>110.9</b>	APP CRS <b>218°</b>	Rwy Idg TDZE <b>161</b> Apt Elev <b>163</b>	<b>5420</b>
---------------------------	------------------------	---	-------------

# ILS or LOC RWY 22

MC MINNVILLE MUNI (MMV)

**DME Required.**  
When local altimeter setting not received, use Aurora State altimeter setting and increase all DA and MDA 60 feet. Increase all visibility ¼ mile.

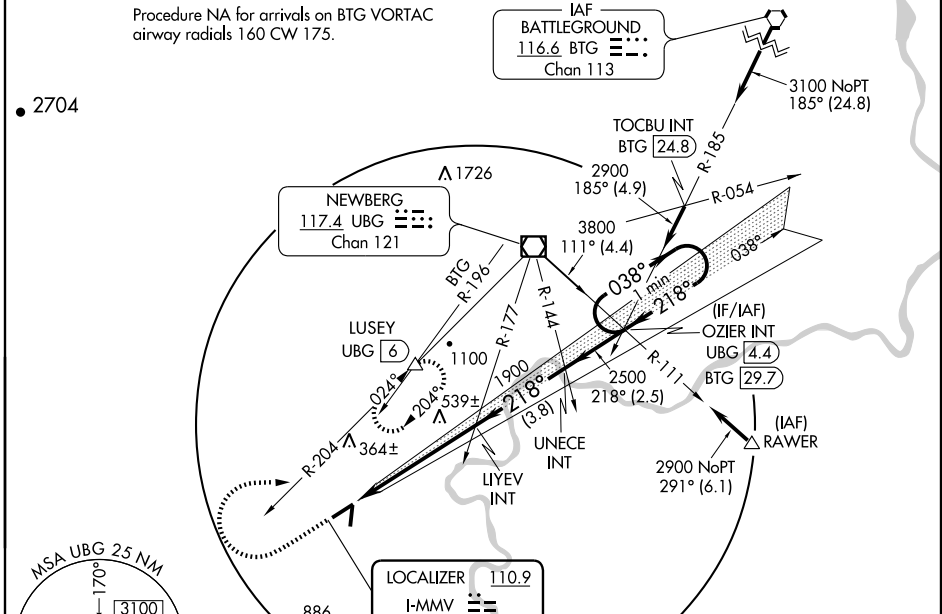


**MISSED APPROACH:** Climb to 900 then climbing right turn to 3000 via heading 069° and UBG VOR/DME R-204 to LUSEY/UBG VOR/DME 6 DME and hold, continue climb-in-hold to 3000.

ASOS <b>135.675</b>	PORTLAND APP CON <b>126.0 284.6 (NORTH)</b>	SEATTLE CENTER <b>125.8 291.7 (SOUTH)</b>	McMINNVILLE RADIO <b>122.45</b>	CLNC DEL <b>118.35</b>	UNICOM <b>123.0 (CTAF) 0</b>
------------------------	--	--	------------------------------------	---------------------------	---------------------------------

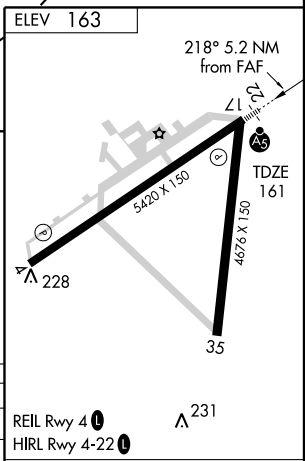
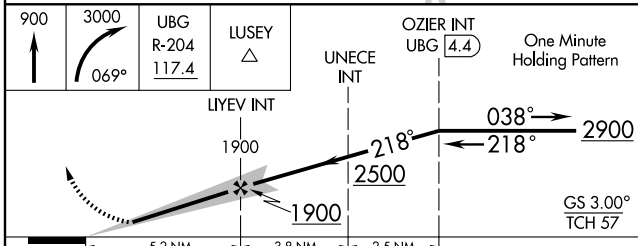
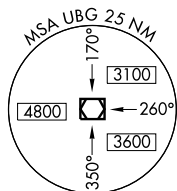
Procedure NA for arrivals on BTG VORTAC airway radials 160 CW 175.

IAF  
BATTLEGROUND  
116.6 BTG  
Chan 113



NW-1, 22 OCT 2009 to 19 NOV 2009

NW-1, 22 OCT 2009 to 19 NOV 2009



CATEGORY	A	B	C	D
S-ILS 22		361-1/2	200 (200-1/2)	
S-LOC 22	600-1/2	439 (500-1/2)	600-3/4 439 (500-3/4)	600-1 439 (500-1)
CIRCLING	640-1	477 (500-1)	760-1 1/2 597 (600-1 1/2)	880-2 1/4 717 (800-2 1/4)

REIL Rwy 4	0			
HIRL Rwy 4-22	0			
FAF to MAP 5.2 NM				
Knots	60	90	120	150
Min:Sec	5:12	3:28	2:36	2:05