

FORT MADISON, IOWA

AL-5625 (FAA)

# VOR/DME RNAV or GPS RWY 34

FORT MADISON MUNI (F'SW)

VORTAC BRL <b>111.4</b> Chan 51	APP CRS <b>353°</b>	Rwy Idg TDZE Apt Elev	<b>4002</b> <b>720</b> <b>724</b>
---------------------------------------	------------------------	-----------------------------	---

MISSED APPROACH: Climb to 2300 then right turn direct DRIBS WP and hold.

AWOS-3  
**120.925**

CHICAGO CENTER  
**135.6 316.1**

UNICOM  
**122.8** (CTAF)

BURLINGTON  
111.4 BRL   
Chan 51

MAP FILLS  
N40°39.23'-W91°19.57'  
111.4 BRL 252.3°-18.7  
730

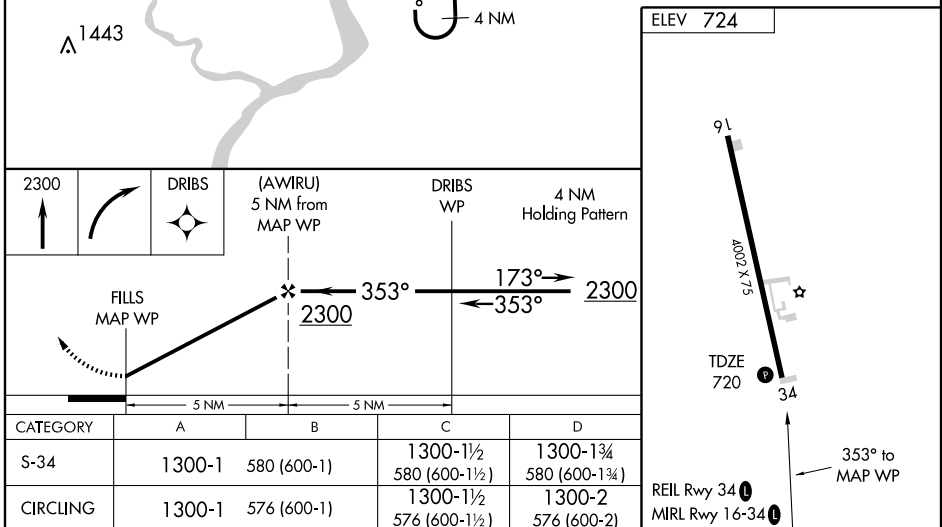
(FAF)  
(AWIRU)  
5 NM from MAP WP  
N40°34.23'-W91°19.34'

IAF  
DRIBS  
N40°29.23'-W91°19.11'  
111.4 BRL 226.8°-22.9  
730

MSA FILLS 25 NM  
2200

NC-3, 22 OCT 2009 to 19 NOV 2009

NC-3, 22 OCT 2009 to 19 NOV 2009



FORT MADISON, IOWA  
Amdt 4A 09183

40°40'N - 91°20'W

FORT MADISON MUNI (F'SW)

# VOR/DME RNAV or GPS RWY 34