

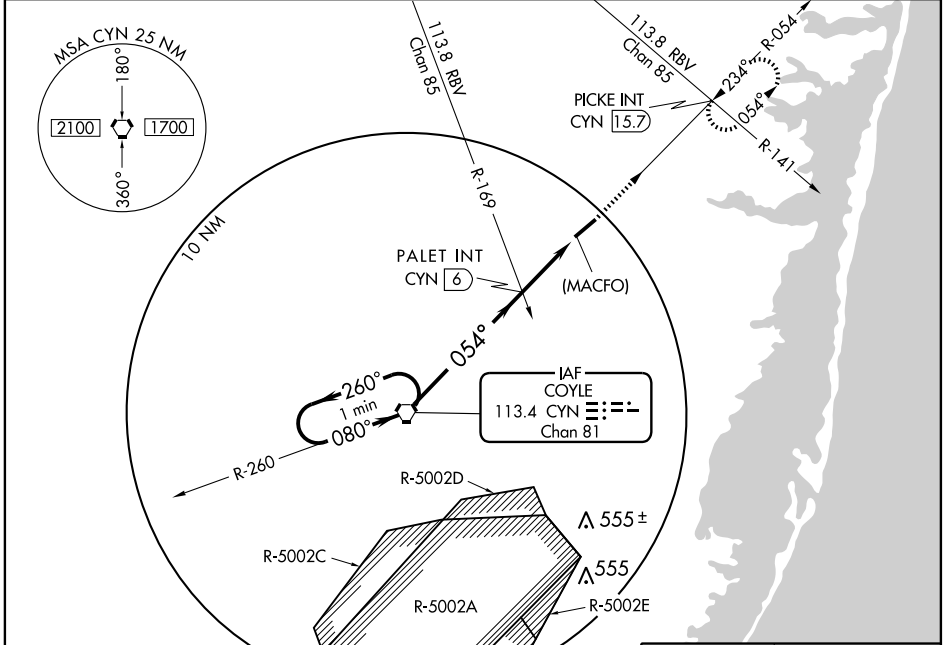
VORTAC CYN <b>113.4</b> Chan <b>81</b>	APP CRS <b>054°</b>	Rwy Idg <b>5949</b> TDZE <b>82</b> Apt Elev <b>82</b>
--	------------------------	---

# VOR or GPS RWY 6

TOMS RIVER/ROBERT J. MILLER AIR PARK (MJX)

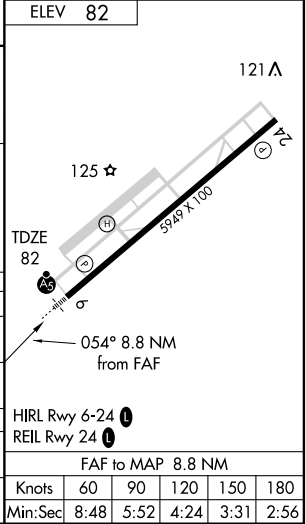
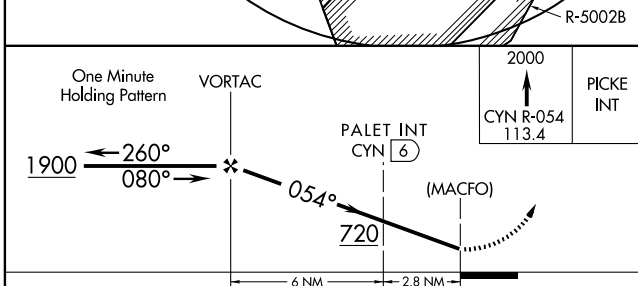
<b>▼</b> Use McGuire AFB altimeter setting. ACTIVATE MALS Rwy 6 UNICOM.	<b>MALS</b> 	<b>MISSED APPROACH:</b> Climb to 2000 via CYN R-054 to PICKE INT/1.5.7 DME and hold.
<b>▲</b> NA Inoperative table does not apply to CAT C.		

AWOS-3 <b>119.875</b>	MCGUIRE APP CON <b>124.15 363.8</b>	UNICOM <b>122.7 (CTAF)</b>	GCO <b>121.725</b>
--------------------------	--	-------------------------------	-----------------------



NE-2, 22 OCT 2009 to 19 NOV 2009

NE-2, 22 OCT 2009 to 19 NOV 2009



CATEGORY	A	B	C	D
S-6	720-¾ 638 (700-¾)		720-1¾ 638 (700-1¾)	720-2 638 (700-2)
CIRCLING	720-1 638 (700-1)		720-1¾ 638 (700-1¾)	720-2 638 (700-2)
DUAL VOR or VOR/DME MINIMA				
S-6	520-¾ 438 (500-¾)		520-1¼ 438 (500-1¼)	520-1½ 438 (500-1½)
CIRCLING	520-1 438 (500-1)	540-1 458 (500-1)	540-1½ 458 (500-1½)	640-2 558 (600-2)