

POPLAR BLUFF, MISSOURI

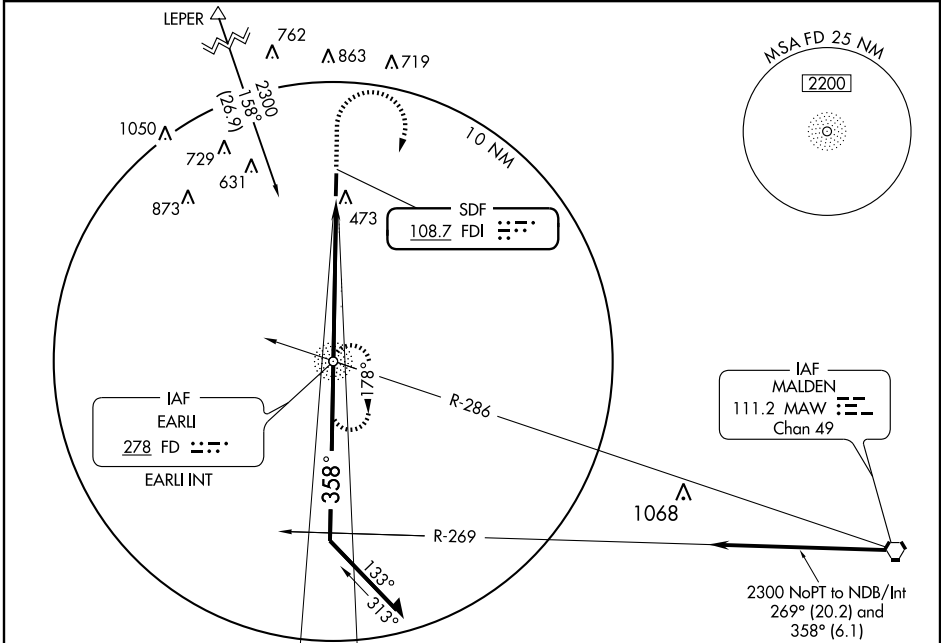
AL-5622 (FAA)

SDF RWY 36
POPLAR BLUFF MUNI (POF)

SDF FDI 108.7	APP CRS 358°	Rwy Idg 4708 TDZE 330 Apt Elev 331
-------------------------	------------------------	---

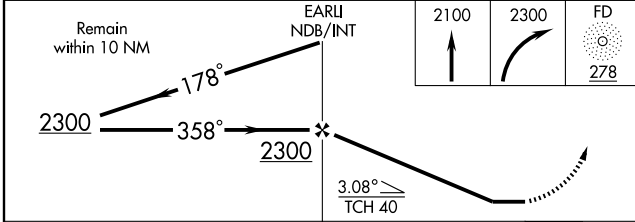
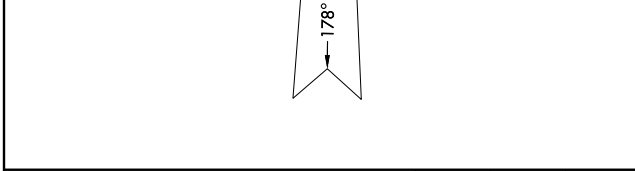
MISSED APPROACH: Climb to 2100 then climbing right turn to 2300 direct EARLU NDB/Int and hold.

ASOS 124.225	MEMPHIS CENTER 120.075 289.4	UNICOM 123.0 (CTAF) 0
------------------------	--	---------------------------------



NC-3, 22 OCT 2009 to 19 NOV 2009

NC-3, 22 OCT 2009 to 19 NOV 2009



ELEV 331	81
Rwy 36 Idg 4708'	36
5008 x 100'	
358° 5.9 NM from FAF	
TDZE 330	
REIL Rwy 18 and 36	
MRL Rwy 18-36	
FAF to MAP 5.9 NM	
Knots	60 90 120 150 180
Min:Sec	5:54 3:56 2:57 2:22 1:58

CATEGORY	A	B	C	D
S-36	680-1	350 (400-1)		680-1¼ 350 (400-1¼)
CIRCLING	840-1	509 (600-1)	840-1½ 509 (600-1½)	900-2 569 (600-2)

POPLAR BLUFF, MISSOURI
Amdt 1B 06103

36°46'N-90°19'W

POPLAR BLUFF MUNI (POF)
SDF RWY 36