

MORRIS, MINNESOTA

AL-5621 (FAA)

VOR RWY 32

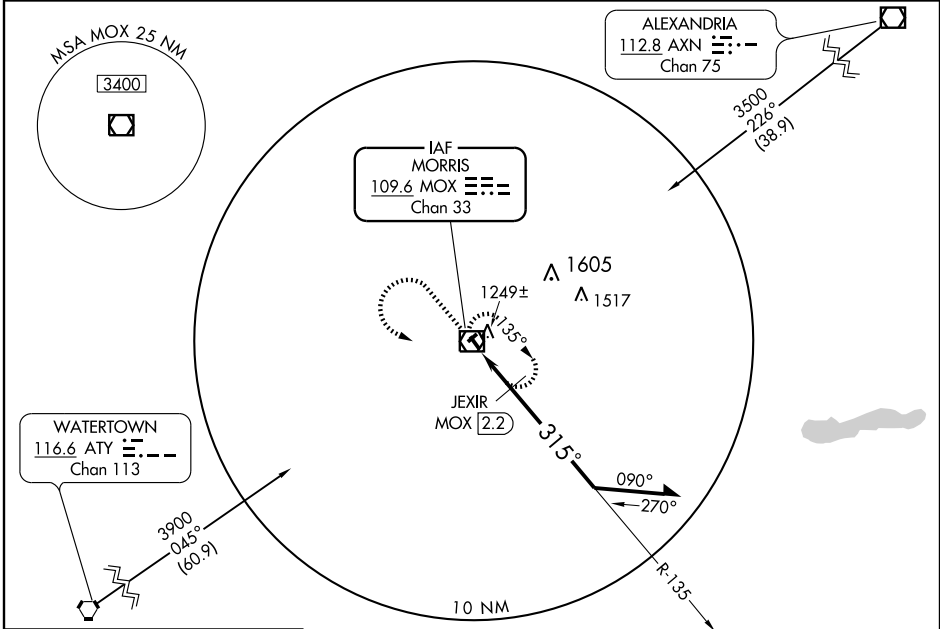
MORRIS MUNI-CHARLIE SCHMIDT FIELD (MOX)

VOR/DME MOX 109.6 Chan 33	APP CRS 315°	Rwy Idg TDZE Apt Elev	4000 1132 1138
--	------------------------	-----------------------------	---

∇ VDP NA when using Benson altimeter setting.
▲ NA When local altimeter setting not received, use Benson altimeter setting and increase all MDAs 60 feet, and Cat. C visibility ¼ mile, JEXIR FIX MINIMUMS S-32 Cat. C visibility ¼ mile.

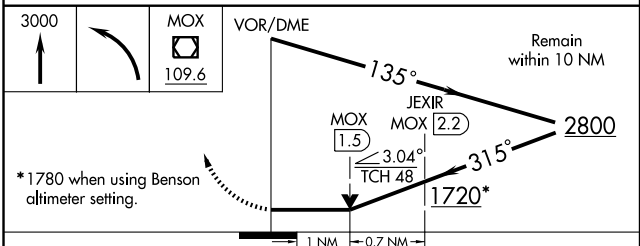
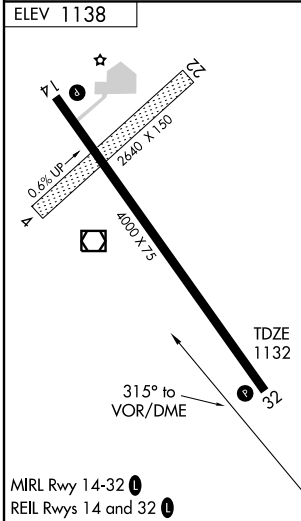
MISSED APPROACH: Climb to 3000 then left turn direct MOX VOR/DME and hold.

AWOS-3 109.6	MINNEAPOLIS CENTER 126.1 269.2	UNICOM 122.8 (CTAF)
------------------------	--	-------------------------------



NC-1, 22 OCT 2009 to 19 NOV 2009

NC-1, 22 OCT 2009 to 19 NOV 2009



CATEGORY	A	B	C	D
S-32	1720-1	588 (600-1)	1720-1½ 588 (600-1½)	NA
CIRCLING	1720-1	582 (600-1)	1720-1½ 582 (600-1½)	NA
JEXIR FIX MINIMUMS				
S-32	1500-1 368 (400-1)			NA
CIRCLING	1560-1 422 (500-1)	1600-1 462 (500-1)	1600-1½ 462 (500-1½)	NA

MORRIS, MINNESOTA
Amdt 5 09015

MORRIS MUNI-CHARLIE SCHMIDT FIELD (MOX)

45°34'N-95°58'W

VOR RWY 32