

MORRIS, MINNESOTA

AL-5621 (FAA)

# VOR RWY 14

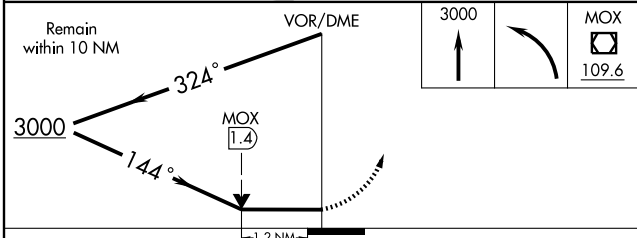
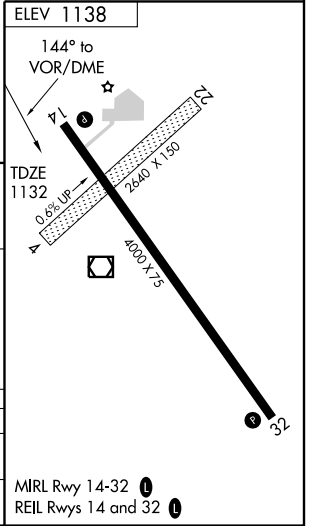
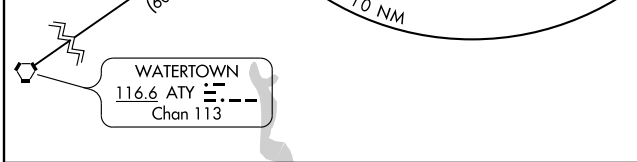
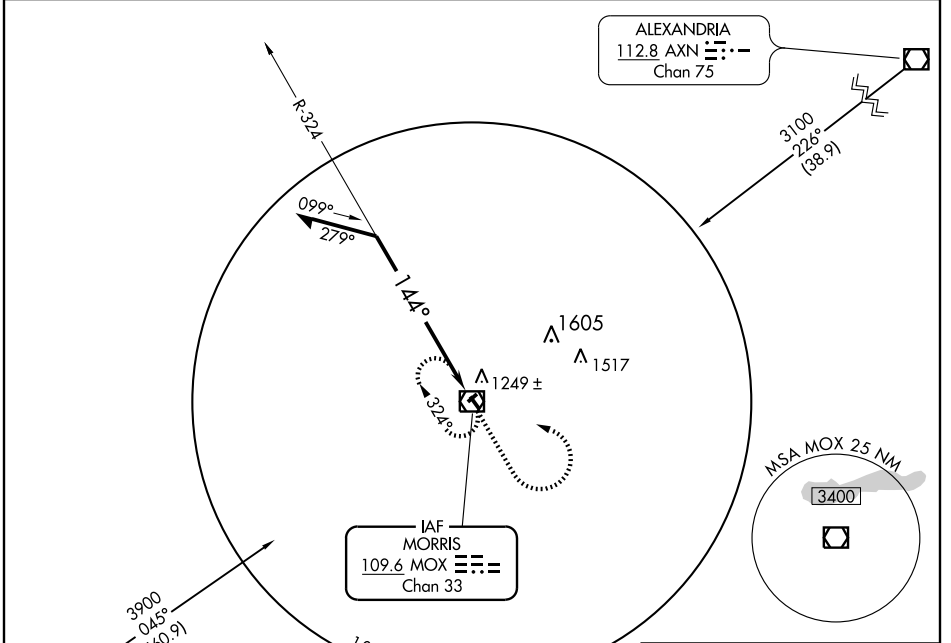
MORRIS MUNI-CHARLIE SCHMIDT FIELD (MOX)

VOR/DME MOX <b>109.6</b> Chan 33	APP CRS <b>144°</b>	Rwy Idg TDZE Apt Elev	<b>4000</b> <b>1132</b> <b>1138</b>
--	------------------------	-----------------------------	---

**NA** When local altimeter setting not received, use Benson altimeter setting and increase all MDA 60 feet. VDP NA when using Benson altimeter setting.

MISSED APPROACH: Climb to 3000 then left turn direct MOX VOR/DME and hold.

AWOS-3 <b>109.6</b>	MINNEAPOLIS CENTER <b>126.1 269.2</b>	UNICOM <b>122.8 (CTAF)</b>
------------------------	--	-------------------------------



CATEGORY	A	B	C	D
S-14	1560-1	428 (500-1)	1560-1¼ 428 (500-1¼)	NA
CIRCLING	1560-1 422 (500-1)	1600-1 462 (500-1)	1600-1½ 462 (500-1½)	NA

MORRIS, MINNESOTA  
Amdt 1 09071

45°34'N-95°58'W

MORRIS MUNI-CHARLIE SCHMIDT FIELD (MOX)

# VOR RWY 14

NC-1, 22 OCT 2009 to 19 NOV 2009

NC-1, 22 OCT 2009 to 19 NOV 2009