

ALMA, MICHIGAN

AL-5620 (FAA)

VOR/DME MOP 110.6 Chan 43	APP CRS 178°	Rwy ldg 3197 TDZE 754 Apt Elev 754
---	------------------------	---

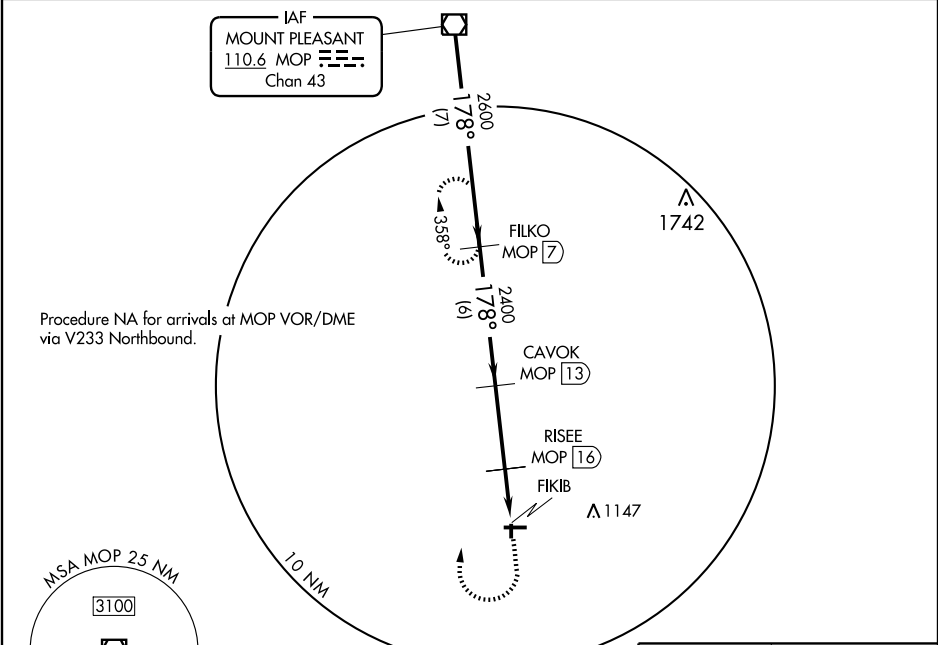
VOR/DME RWY 18

ALMA / GRATIOT COMMUNITY (AMN)

▲ NA

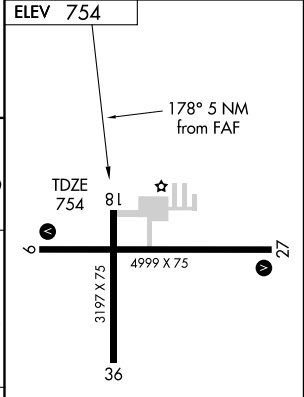
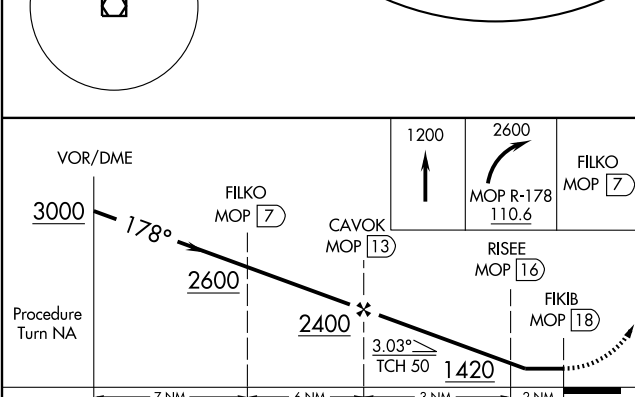
MISSED APPROACH: Climb to 1200, then climbing right turn to 2600 via MOP R-178 to FILKO/7 DME and hold.

AWOS-3 124.175	SAGINAW APP CON * 126.45 235.625	CLNC DEL 119.25	UNICOM 122.8 (CTAF) 0
--------------------------	--	---------------------------	--



EC-1, 22 OCT 2009 to 19 NOV 2009

EC-1, 22 OCT 2009 to 19 NOV 2009



CATEGORY	A	B	C	D
S-18	1140-1	386 (400-1)	1140-1¼ 386 (400-1¼)	NA
CIRCLING	1180-1 426 (500-1)	1220-1 466 (500-1)	1220-1½ 466 (500-1½)	NA

REIL Rwy 9 and 27 0					
MIRL Rwy 9-27 and 18-36 0					
Knots	60	90	120	150	180
Min:Sec					

ALMA, MICHIGAN
Amdt 1 09295

43°19'N - 84°41'W

VOR/DME RWY 18