

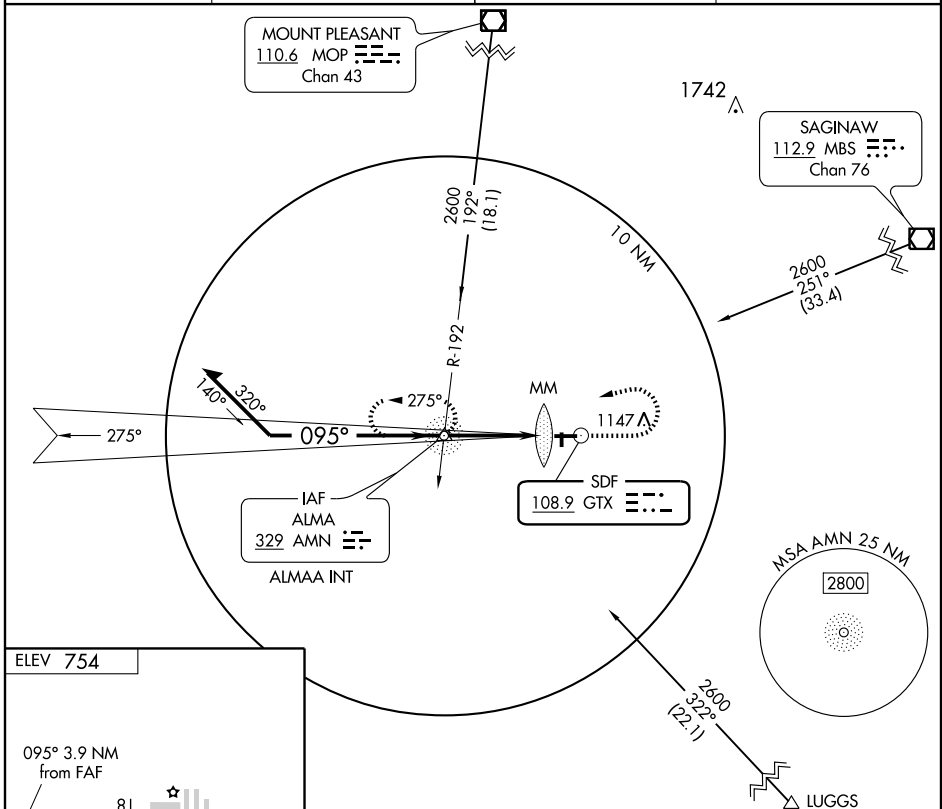
ALMA, MICHIGAN

AL-5620 (FAA)

SDF GTX 108.9	APP CRS 095°	Rwy Idg TDZE Apt Elev	4999 752 754
-------------------------	------------------------	-----------------------------	---

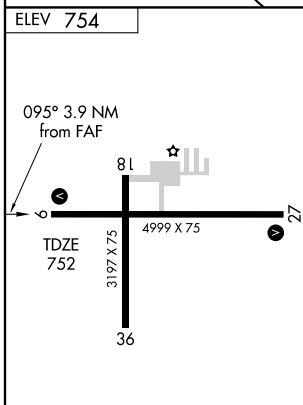
SDF RWY 9
ALMA/GRATIOT COMMUNITY (AMN)

<p>NA ADF REQUIRED</p>		<p>MISSED APPROACH: Climb to 2600, then left turn direct AMN NDB and hold.</p>	
AWOS-3 124.175	SAGINAW APP CON * 126.45 235.625	CLNC DEL 119.25	UNICOM 122.8 (CTAF) 0



EC-1, 22 OCT 2009 to 19 NOV 2009

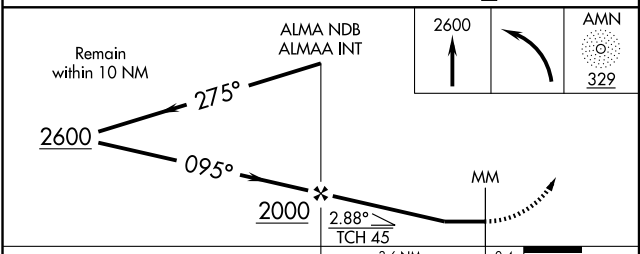
EC-1, 22 OCT 2009 to 19 NOV 2009



REIL Rwy 9 and 27 **0**
MIRL Rwy 9-27 and 18-36 **0**

FAF to MAP 3.6 NM

Knots	60	90	120	150	180
Min:Sec	3:36	2:24	1:48	1:26	1:12



CATEGORY	A	B	C	D
S-9	1160-1	408 (500-1)	1160-1½	408 (500-1½)
CIRCLING	1180-1 426 (500-1)	1220-1 466 (500-1)	1220-1½ 466 (500-1½)	1320-2 566 (600-2)

ALMA, MICHIGAN
Amdt 8 09295

43°19'N - 84°41'W

ALMA/GRATIOT COMMUNITY (AMN)
SDF RWY 9