

RNAV (GPS) RWY 8

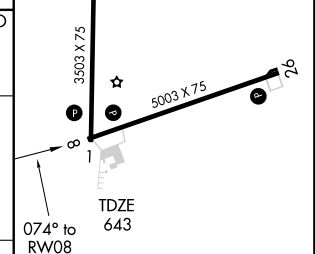
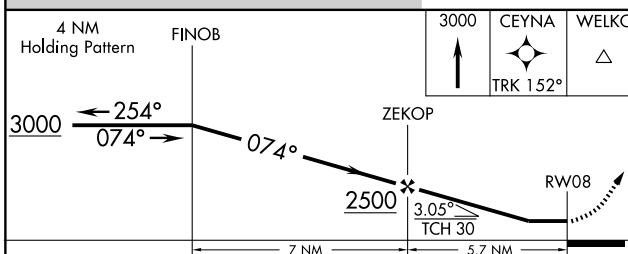
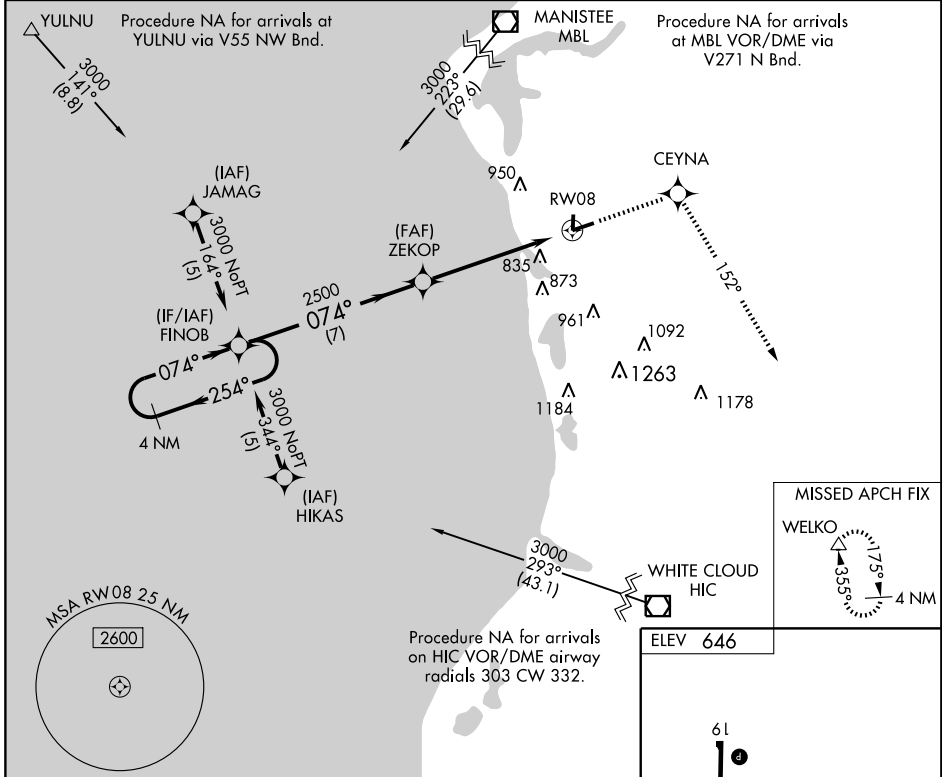
LUDINGTON/MASON COUNTY (LDM)

APP CRS	Rwy Idg	5003
074°	TDZE	643
	Apt Elev	646

DME/DME RNP -0.3 NA. Visibility reduction by helicopters NA. When local altimeter setting not received, use Muskegon County altimeter setting and increase all MDAs 120 feet, increase LNAV and circling visibility Cat C/D ½ mile.

MISSED APPROACH: Climb to 3000 direct CEYNA and via 152° track to WELKO and hold.

AWOS-3 119.925	MINNEAPOLIS CENTER 120.85 322.35	UNICOM 123.0 (CTAF) ①
--------------------------	--	---------------------------------



CATEGORY	A	B	C	D
LNAV MDA	1140-1	497 (500-1)	1140-1¼ 497 (500-1¼)	1140-1½ 497 (500-1½)
CIRCLING	1160-1	514 (600-1)	1200-1½ 554 (600-1½)	1300-2 654 (700-2)

REIL Rwy 26 ①

MIRL Rwy 8-26 and 1-19 ①

EC-1, 22 OCT 2009 to 19 NOV 2009

EC-1, 22 OCT 2009 to 19 NOV 2009