

RNAV (GPS) RWY 26

LUDINGTON/MASON COUNTY (LDM)

WAAS CH 49206	APP CRS 254°	Rwy Idg 5003
W26A	TDZE 646	Apt Elev 646

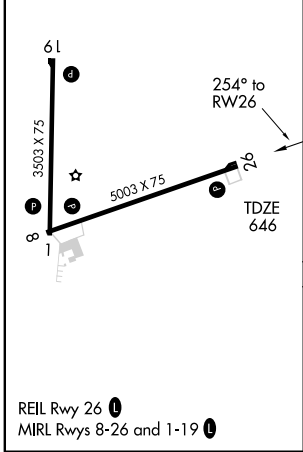
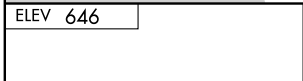
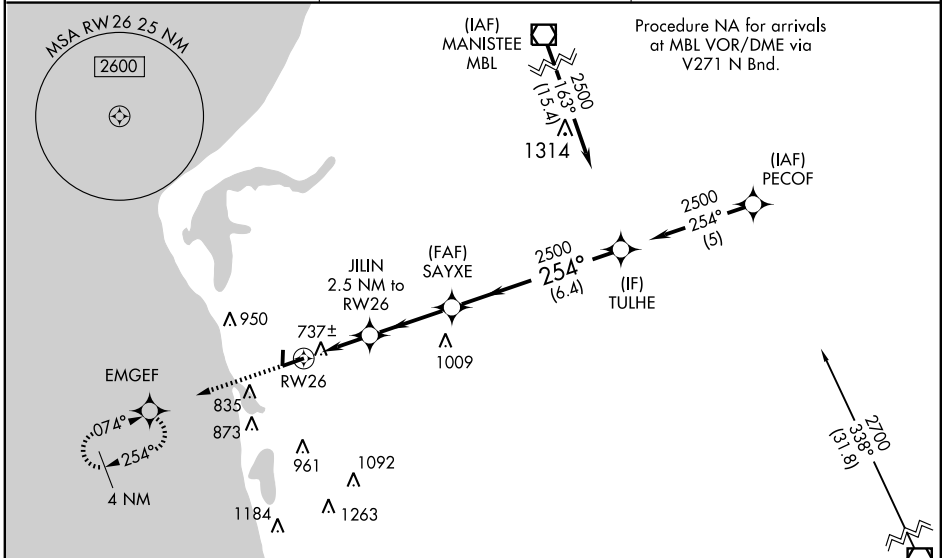
Baro-VNAV NA when using Muskegon altimeter setting. For uncompensated Baro-VNAV systems, procedure NA below -16°C (4°F) or above 47°C (116°F).
 DME/DME RNP -0.3 NA. Visibility reduction by helicopters NA. When local altimeter setting not received, use Muskegon County altimeter setting and increase DAs and MDAs 120 feet and increase LPV visibility ¼ mile all Cats, increase LNAV/VNAV visibility ½ mile all Cats, increase LNAV Cat C/D visibility ¼ mile, increase circling Cat C/D visibility ½ mile.

MISSED APPROACH: Climb to 2500 direct EMGEF and hold.

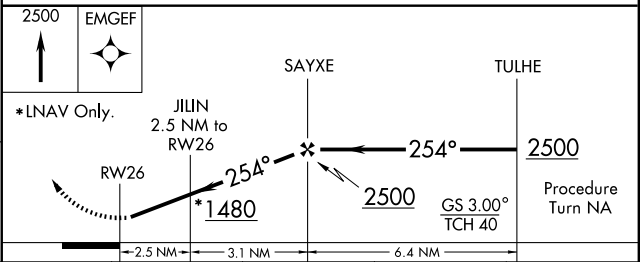
AWOS-3
119.925

MINNEAPOLIS CENTER
120.85 322.35

UNICOM
123.0 (CTAF)



Procedure NA for arrivals on HIC VOR/DME airway radials 303 CW 027.
 WHITE CLOUD HIC



CATEGORY	A	B	C	D
LPV DA		975-1¼	329 (400-1¼)	
LNAV/VNAV DA		1020-1¼	374 (400-1¼)	
LNAV MDA	1000-1	354 (400-1)		1000-1¼ 354 (400-1¼)
CIRCLING	1160-1	514 (600-1)	1200-1½ 554 (600-1½)	1300-2 654 (700-2)

EC-1, 22 OCT 2009 to 19 NOV 2009

EC-1, 22 OCT 2009 to 19 NOV 2009