

MANISTIQUE, MICHIGAN

AL-5616 (FAA)

VOR/DME ISQ 110.4 Chan 41	APP CRS 280°	Rwy Idg 5001 TDZE 684 Apt Elev 685
--	------------------------	---

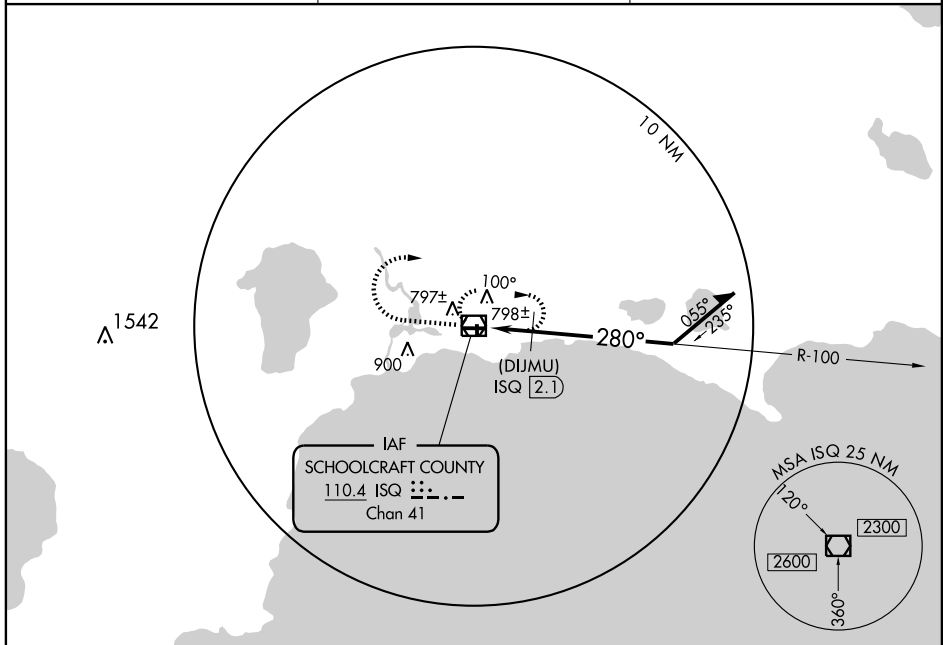
VOR or GPS RWY 28

MANISTIQUE/ SCHOOLCRAFT COUNTY (ISQ)

▲ NA Obtain local altimeter setting on CTAF, when not received, use Escanaba altimeter setting and increase all MDA's 100 feet, and visibility Cats. C and D ¼ mile.

MISSED APPROACH: Climb to 2300, then right turn direct ISQ VOR/DME and hold.

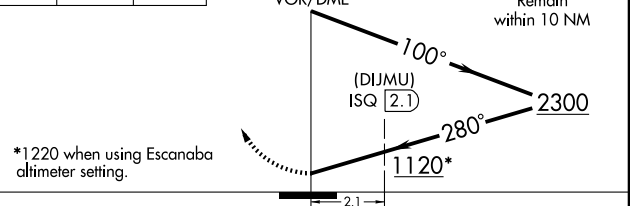
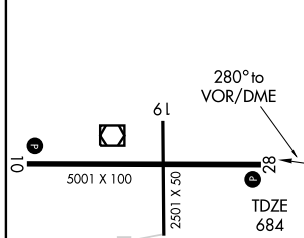
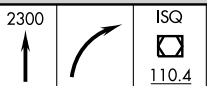
AWOS-3 110.4	GREEN BAY RADIO 122.25	UNICOM 122.8 (CTAF) 📻
------------------------	----------------------------------	--



EC-1, 22 OCT 2009 to 19 NOV 2009

EC-1, 22 OCT 2009 to 19 NOV 2009

ELEV 685



CATEGORY	A	B	C	D
S-28	1120 - 1	436 (500-1)	1120 - 1¼ 436 (500-1¼)	1120 - 1½ 436 (500-1½)
CIRCLING	1120 - 1 435 (500-1)	1140 - 1 455 (500-1)	1140 - 1½ 455 (500-1½)	1260 - 2 575 (600-2)
DME MINIMUMS				
S-28	1060 - 1 376 (400-1)			1060 - 1¼ 376 (400-1¼)
CIRCLING	1120 - 1 435 (500-1)	1140 - 1 455 (500-1)	1140 - 1½ 455 (500-1½)	1260 - 2 575 (600-2)

REIL Rwy 28 **📻**
MIRL Rwy 10-28 **📻**

MANISTIQUE, MICHIGAN
Orig-A 09127

MANISTIQUE/ SCHOOLCRAFT COUNTY (ISQ)
45°58'N - 86°10'W
VOR or GPS RWY 28