

RNAV (GPS) RWY 29

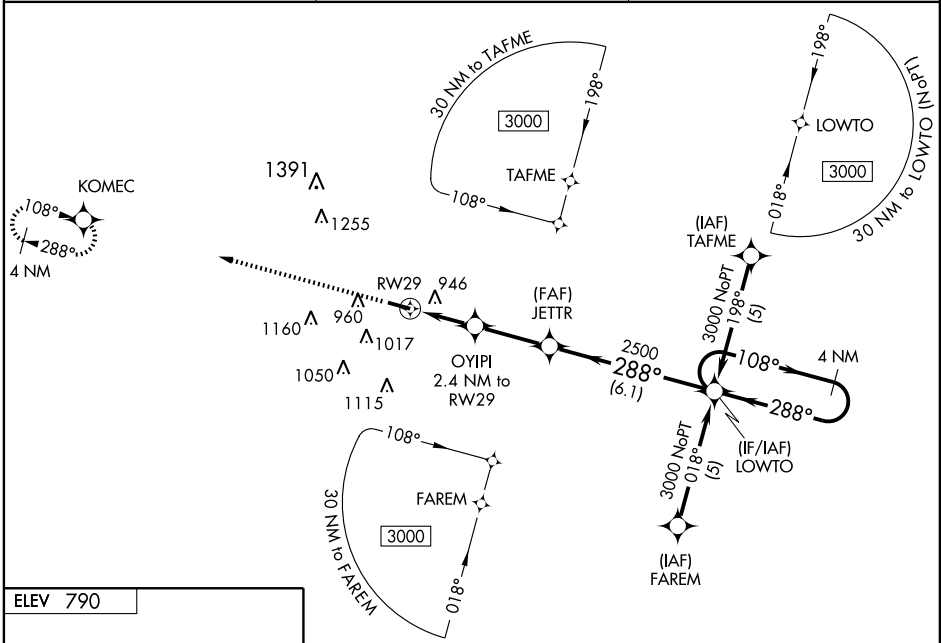
ROCHESTER/FULTON COUNTY (R.C.R.)

WAAS CH 48809 W29A	APP CRS 288°	Rwy Idg TDZE Apt Elev	5001 790 790
--	------------------------	-----------------------------	---

DME/DME RNP-0.3 NA. Visibility reduction by helicopters NA.
 For uncompensated Baro-VNAV systems, LNAV/VNAV NA below -16°C (4°F) or above 47° (116°F). When local altimeter setting not received, use Goshen altimeter setting and increase all DA 81 feet and all MDA 100 feet, increase LPV all Cats, LNAV/Cats C and D, Circling Cat C visibility ¼ mile, LNAV/VNAV all Cats visibility ½ mile. Baro-VNAV and VDP NA when using Goshen altimeter setting.

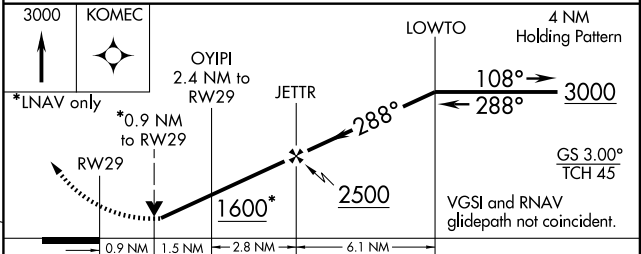
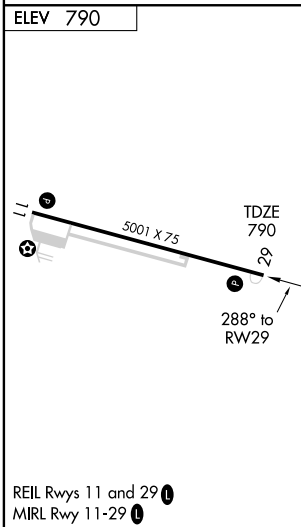
MISSED APPROACH: Climb to 3000 direct KOMECA and hold.

AWOS-3 118.775	SOUTH BEND APP CON * 132.05 257.8	UNICOM 122.7 (CTAF) 📻
--------------------------	---	--



EC-2, 22 OCT 2009 to 19 NOV 2009

EC-2, 22 OCT 2009 to 19 NOV 2009



CATEGORY	A	B	C	D
LPV DA		1127-1¼	337 (400- 1¼)	
LNAV/VNAV DA		1244-1½	454 (500- 1½)	
LNAV MDA	1200-1	410 (500-1)	1200-1¼	410 (500-1¼)
CIRCLING	1280-1 490 (500-1)	1360-1 570 (600-1)	1360-1½ 570 (500-1½)	1360-2 570 (600-2)