

RNAV (GPS) RWY 11

ROCHESTER/FULTON COUNTY (R.C.R.)

APP CRS	Rwy Idg	5001
108°	TDZE	790
	Apt Elev	790

⚠ DME/DME RNP-0.3 NA. Visibility reduction by helicopters NA.
⚠ NA. When local altimeter setting not received, use Goshen altimeter setting and increase all MDA 100 feet, increase LNAV Cats C and D and Circling Cat C visibility 1/4 mile.

MISSED APPROACH: Climb to 3000 direct LOWTO and hold.

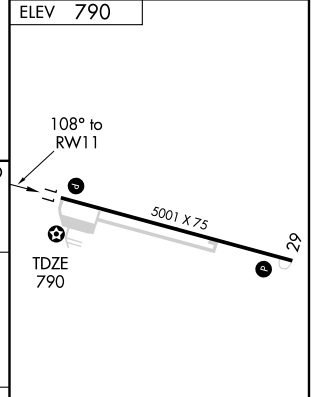
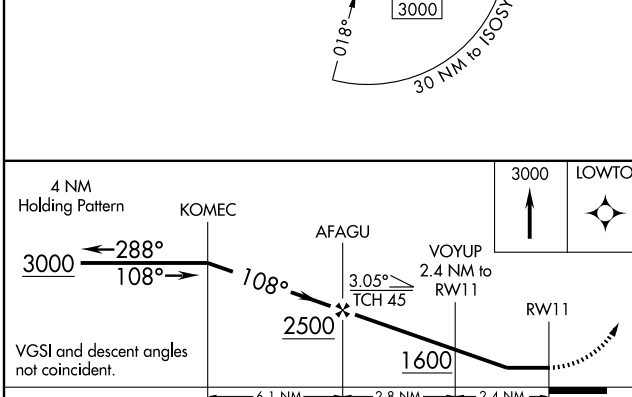
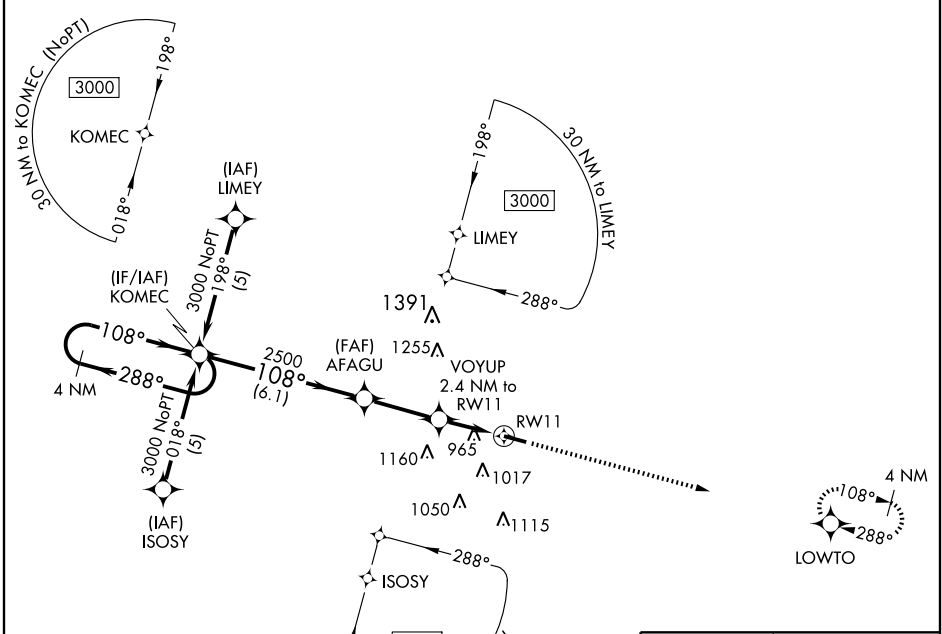
AWOS-3
118.775

SOUTH BEND APP CON ★
132.05 257.8

UNICOM
122.7 (CTAF) 0

EC-2, 22 OCT 2009 to 19 NOV 2009

EC-2, 22 OCT 2009 to 19 NOV 2009



CATEGORY	A	B	C	D
LNAV MDA	1220-1	430 (500-1)	1220-1 1/4 430 (500-1 1/4)	1220-1 1/2 430 (500-1 1/2)
CIRCLING	1280-1 490 (500-1)	1360-1 570 (600-1)	1360-1 1/2 570 (600-1 1/2)	1360-2 570 (600-2)

REIL Rwy 11 and 29 **0**
 MRL Rwy 11-29 **0**