

RNAV (GPS) RWY 8

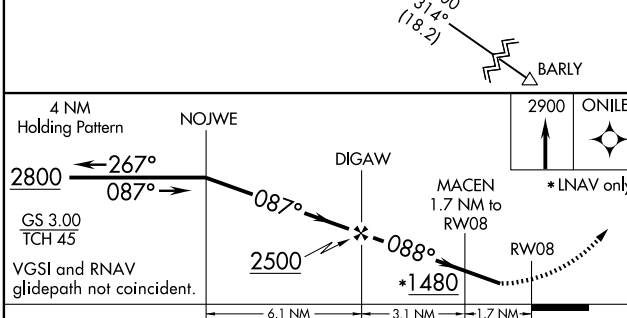
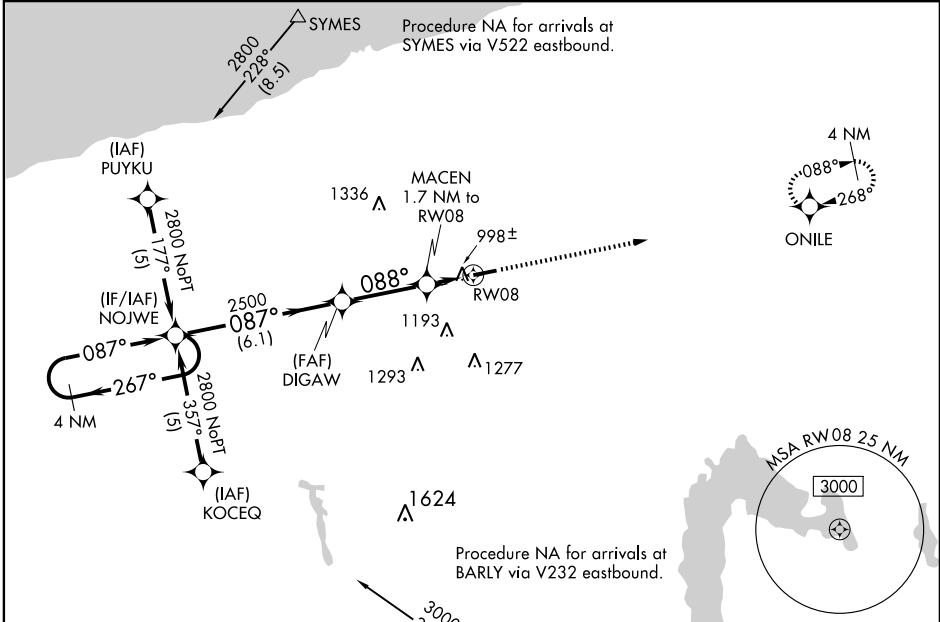
ASHTABULA COUNTY (HZY)

WAAS CH 58013 W08A	APP CRS 088°	Rwy Idg TDZE Apt Elev	5197 919 924
--	------------------------	-----------------------------	---

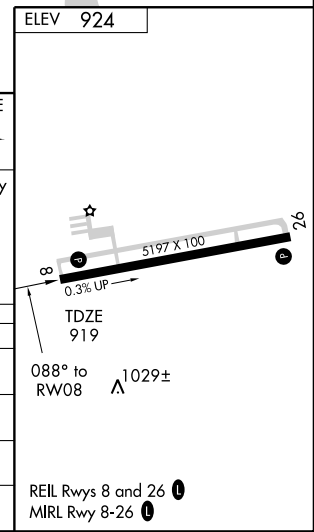
⚠ For uncompensated Baro-VNAV systems, LNAV/VNAV NA below -16°C (4°F) or above 47°C (116°F). DME/DME RNP-0.3 NA. Visibility reduction by helicopters NA. When local altimeter setting not received, use Erie altimeter setting and increase all DA 95 feet and all MDA 100 feet. Increase LPV and LNAV/VNAV visibility ¼ mile all Cats, LNAV Cat C/D visibility ¼ mile. VDP and Baro-VNAV NA when using Erie altimeter setting.

MISSED APPROACH: Climb to 2900 direct ONILE and hold.

ASOS 118.325	ERIE APP CON * 121.0	CLNC DEL (GCO) 121.725	UNICOM 122.8 (CTAF)	123.3 Ⓛ
------------------------	--------------------------------	----------------------------------	-------------------------------	-----------------------



CATEGORY	A	B	C	D
LPV DA		1250-1¼	331 (400-1¼)	
LNAV/VNAV DA		1268-1¼	349 (400-1¼)	
LNAV MDA		1280-1	361 (400-1)	1280-1¼ 361 (400-1¼)
CIRCLING	1360-1 436 (500-1)	1380-1 456 (500-1)	1380-1½ 456 (500-1½)	1480-2 556 (600-2)



EC-2, 22 OCT 2009 to 19 NOV 2009

EC-2, 22 OCT 2009 to 19 NOV 2009