

# RNAV (GPS) RWY 26

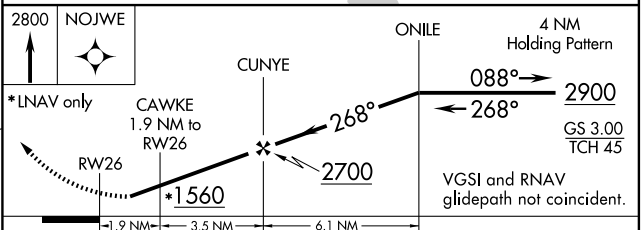
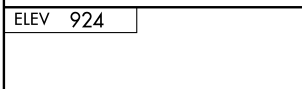
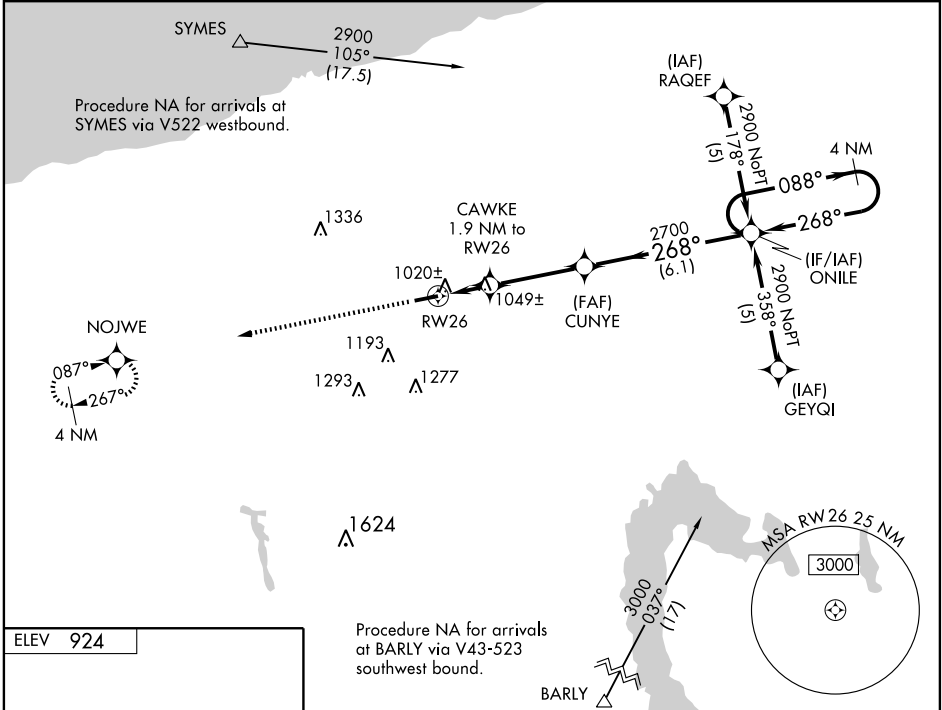
ASHTABULA COUNTY (HZY)

WAAS CH <b>72713</b> <b>W26A</b>	APP CRS <b>268°</b>	Rwy Idg TDZE Apt Elev	<b>5197</b> <b>924</b> <b>924</b>
--	------------------------	-----------------------------	---

For uncompensated Baro-VNAV systems, LNAV/VNAV NA below -16°C (4°F) or above 47°C (116°F). DME/DME RNP-0.3 NA. Visibility reduction by helicopters NA. When local altimeter setting not received, use Erie altimeter setting and increase all DA 95 feet and all MDA 100 feet. Increase LPV and LNAV/VNAV visibility ½ mile all Cats, LNAV Cat C/D visibility ¼ mile. VDP and Baro-VNAV NA when using Erie altimeter setting.

MISSED APPROACH: Climb to 2800 direct NOJWE and hold.

ASOS <b>118.325</b>	ERIE APP CON * <b>121.0</b>	CLNC DEL (GCO) <b>121.725</b>	UNICOM <b>122.8</b> (CTAF)	<b>123.3</b> (I)
------------------------	--------------------------------	----------------------------------	-------------------------------	------------------



CATEGORY	A	B	C	D
LPV DA		1239-1	315 (400-1)	
LNAV/VNAV DA		1364-1½	440 (500-1½)	
LNAV MDA	1300-1	376 (400-1)		1300-1½ 376 (400-1½)
CIRCLING	1360-1 436 (500-1)	1380-1 456 (500-1)	1380-1½ 456 (500-1½)	1480-2 556 (600-2)

REIL Rwy 8 and 26 (I)  
MIRL Rwy 8-26 (I)

EC-2, 22 OCT 2009 to 19 NOV 2009

EC-2, 22 OCT 2009 to 19 NOV 2009