

# ROCKIES SEVEN DEPARTURE

600Z NOV 01 01 61 00Z OCT 22 '1-MS

**TAKE-OFF OBSTACLE NOTES**

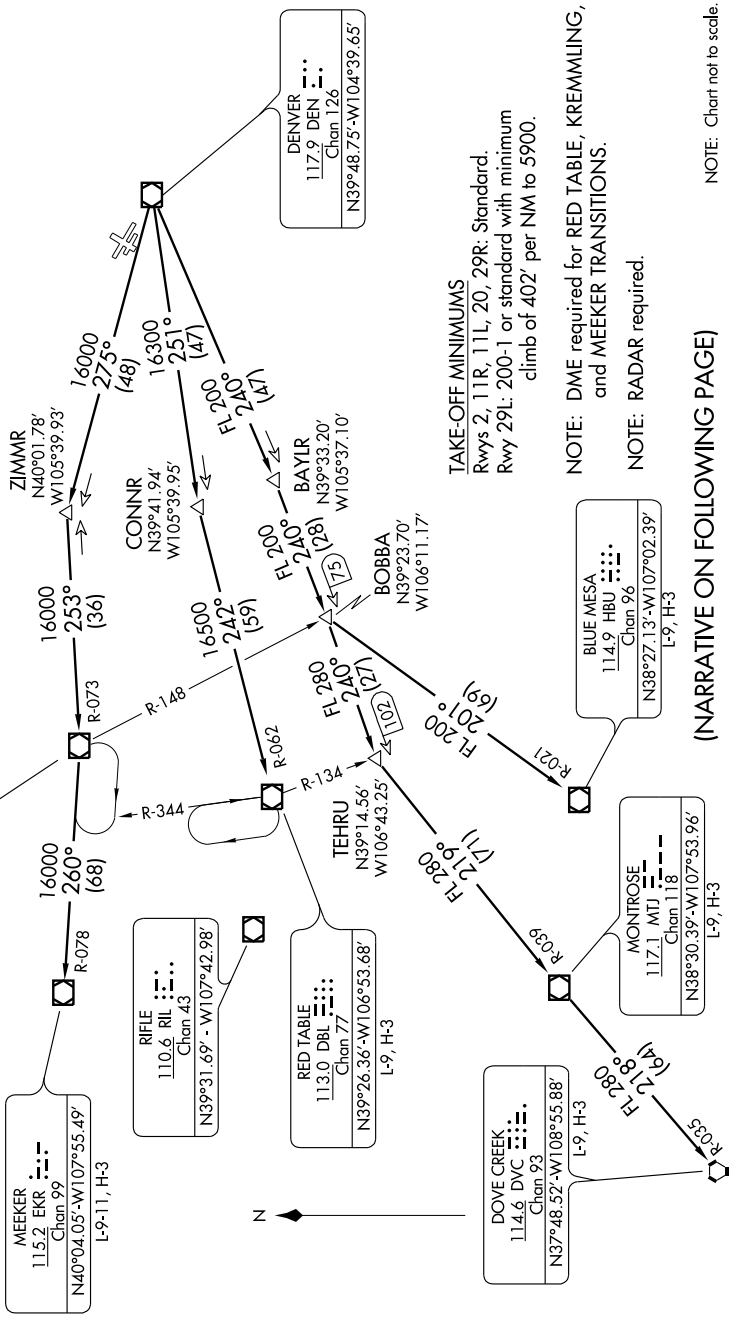
**RWY 29L:** Terrain beginning 45' from DER, 292' left of centerline, up to 5839' MSL. Fence 1015' from DER, 392' left of centerline, 15' AGL/5725' MSL. Fence 982' from DER, 303' left of centerline, 14' AGL/5714' MSL. Multiple trees beginning 687' from DER, 615' right of centerline, up to 70' AGL/5839' MSL.

**RWY 2:** Pole 432' from DER, 370' right of centerline, 49' AGL/5619' MSL.

**ATIS 126.25**  
DENVER DEP CON  
126.1 360.75

**MEEKER**  
115.2 EKR  
Chan 99  
N40°04.05'-W107°55.49'  
L-9, H-3

**KREMMLING**  
113.8 RIG  
Chan 85  
N40°00.16'-W106°26.55'  
L-9, H-3, H-5



**TAKE-OFF MINIMUMS**  
Rwys 2, 11R, 11L, 20, 29R: Standard.  
Rwy 29L: 200-1 or standard with minimum climb of 402' per NM to 5900.

**NOTE:** DME required for RED TABLE, KREMMLING, and MEEKER TRANSITIONS.  
**NOTE:** RADAR required.

(NARRATIVE ON FOLLOWING PAGE)

NOTE: Chart not to scale.