

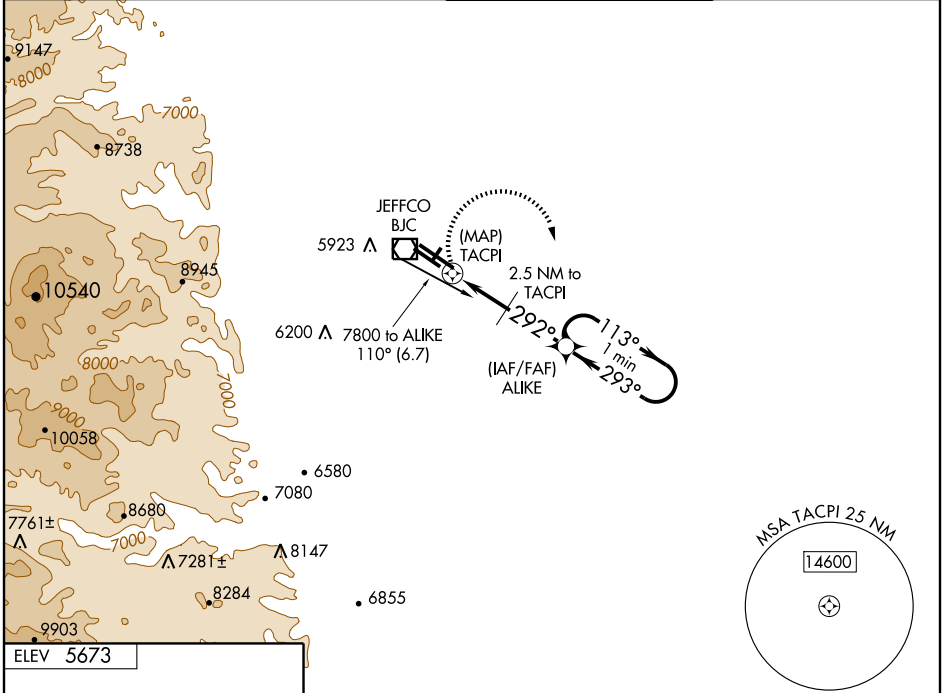
GPS RWY 29L

DENVER/ROCKY MOUNTAIN METROPOLITAN (B.JC)

APP CRS 292°	Rwy Idg 7002
	TDZE 5628
	Apt Elev 5673

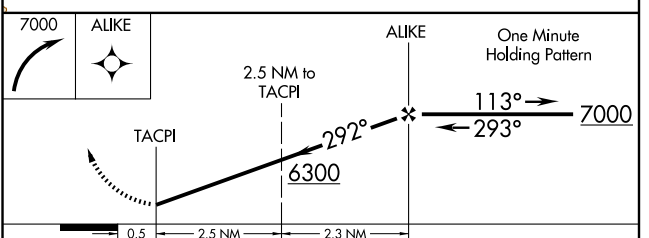
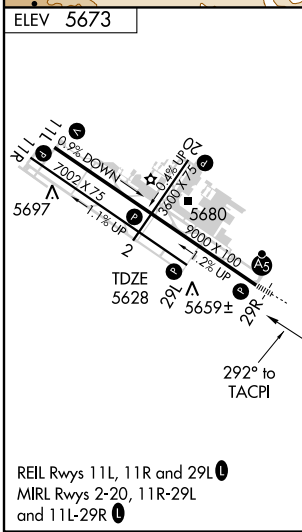
NA When control tower closed, use Denver Intl altimeter setting. MISSED APPROACH: Climbing right turn to 7000 direct ALIKE WP and hold.

ATIS 126.25	DENVER APP CON 126.1 360.75	METRO TOWER* 118.6 (CTAF) 233.7	GND CON 121.7
-----------------------	---------------------------------------	---	-------------------------



SW-1, 22 OCT 2009 to 19 NOV 2009

SW-1, 22 OCT 2009 to 19 NOV 2009



CATEGORY	A	B	C	D
S-29L	6040-1	412 (400-1)	6040-1¼	412 (400-1¼)
CIRCLING	6180-1	507 (600-1)	6240-1½	6240-2
			567 (600-1½)	567 (600-2)
DENVER INTL ALTIMETER SETTING MINIMUMS				
S-29L	6120-1	492 (500-1)	6120-1¼	492 (500-1½)
CIRCLING	6260-1	587 (600-1)	6320-1¾	6320-2
			647 (700-1¾)	647 (700-2)