

VOR RWY 6

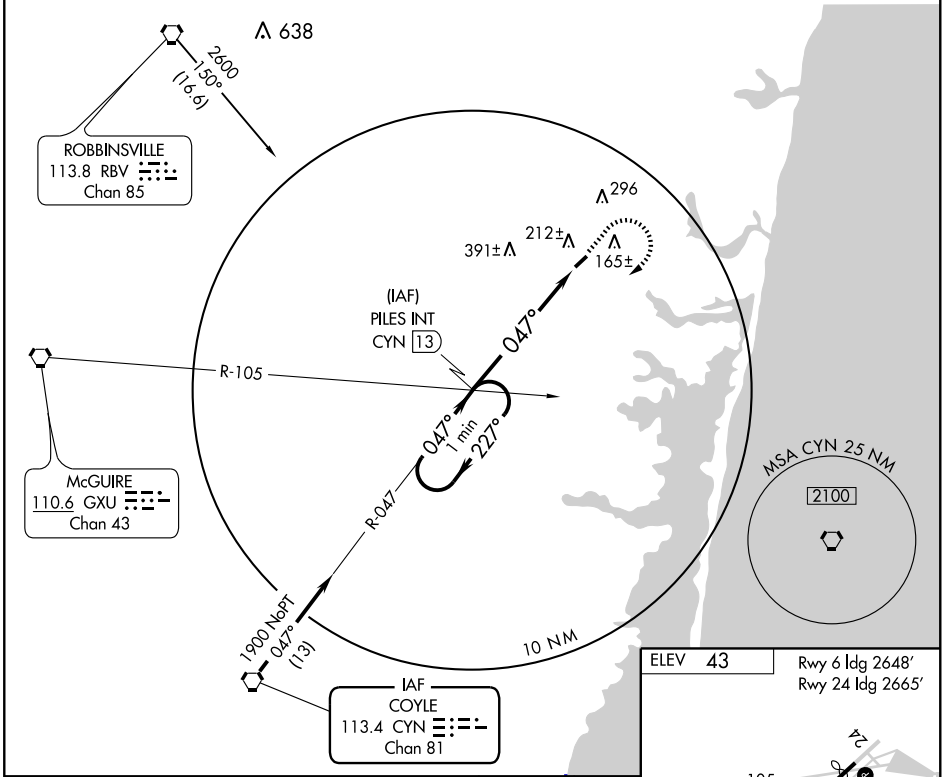
LAKEWOOD (N12)

VORTAC CYN 113.4 Chan 81	APP CRS 047°	Rwy ldg 2648 TDZE 43 Apt Elev 43
--	------------------------	---

NA Use Lakehurst NAEs altimeter setting; when not received, use McGuire AFB altimeter setting.

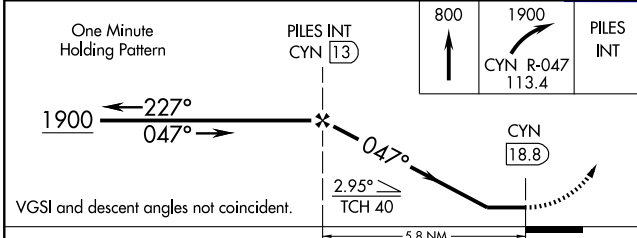
MISSED APPROACH Climb to 800 then climbing right turn to 1900 via CYN R-047 to PILES Int/CYN 13 DME and hold.

McGUIRE APP CON 124.15 363.8	GCO 121.725	UNICOM 122.8 (CTAF) 0
--	-----------------------	---------------------------------

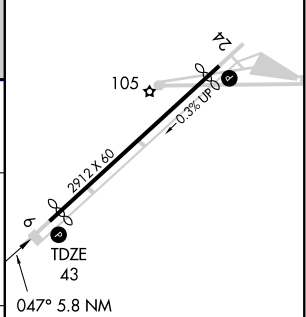


NE-2, 22 OCT 2009 to 19 NOV 2009

NE-2, 22 OCT 2009 to 19 NOV 2009



ELEV 43	Rwy 6 ldg 2648'
	Rwy 24 ldg 2665'



CATEGORY	A	B	C	D
S-6	620 - 1	577 (600-1)		NA
CIRCLING	620 - 1	577 (600-1)		NA
McGUIRE AFB ALTIMETER SETTING MINIMUMS				
S-6	660 - 1	617 (700-1)		NA
CIRCLING	660 - 1	617 (700-1)		NA

MIRL Rwy 6-24 0				
FAF to MAP 5.8 NM				
Knots	60	90	120	150 180
Min:Sec	5:48	3:52	2:54	2:19 1:56