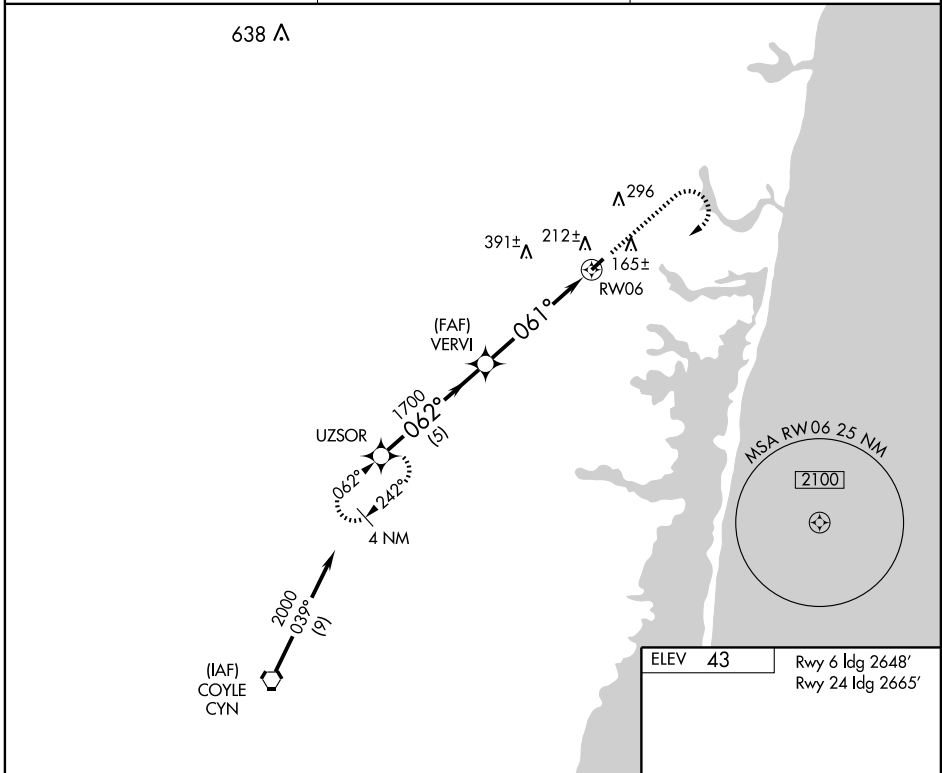


RNAV (GPS) RWY 6 LAKEWOOD (N12)

APP CRS 061°	Rwy Idg 2648
	TDZE 43
	Apt Elev 43

▽ Use Lakehurst NAES altimeter setting; when not received, use McGuire AFB altimeter setting.
▲ NA MISSED APPROACH Climb to 1000 then climbing right turn to 2000 direct UZSOR WP and hold.

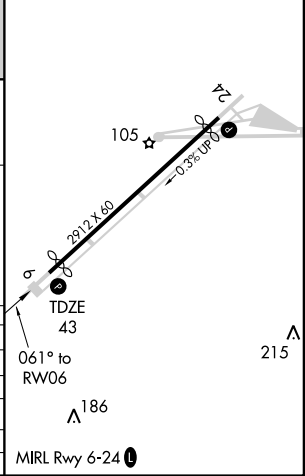
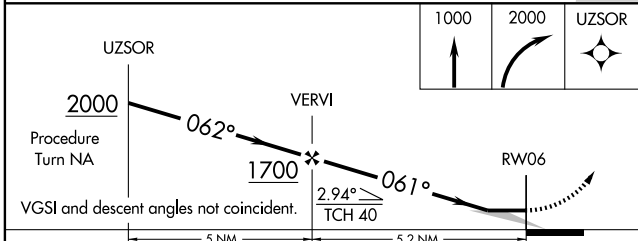
McGUIRE APP CON 124.15 363.8	GCO 121.725	UNICOM 122.8 (CTAF) 0
--	-----------------------	---------------------------------



NE-2, 22 OCT 2009 to 19 NOV 2009

NE-2, 22 OCT 2009 to 19 NOV 2009

ELEV 43	Rwy 6 Idg 2648'
	Rwy 24 Idg 2665'



CATEGORY	A	B	C	D
LNNAV MDA	560-1	517 (600-1)		NA
CIRCLING	600-1	557 (600-1)		NA
McGUIRE AFB ALTIMETER SETTING MINIMUMS				
LNNAV MDA	580-1	537 (600-1)		NA
CIRCLING	640-1	597 (600-1)		NA