

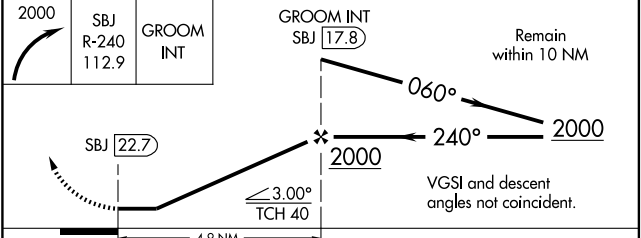
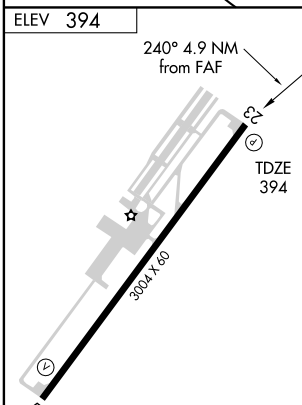
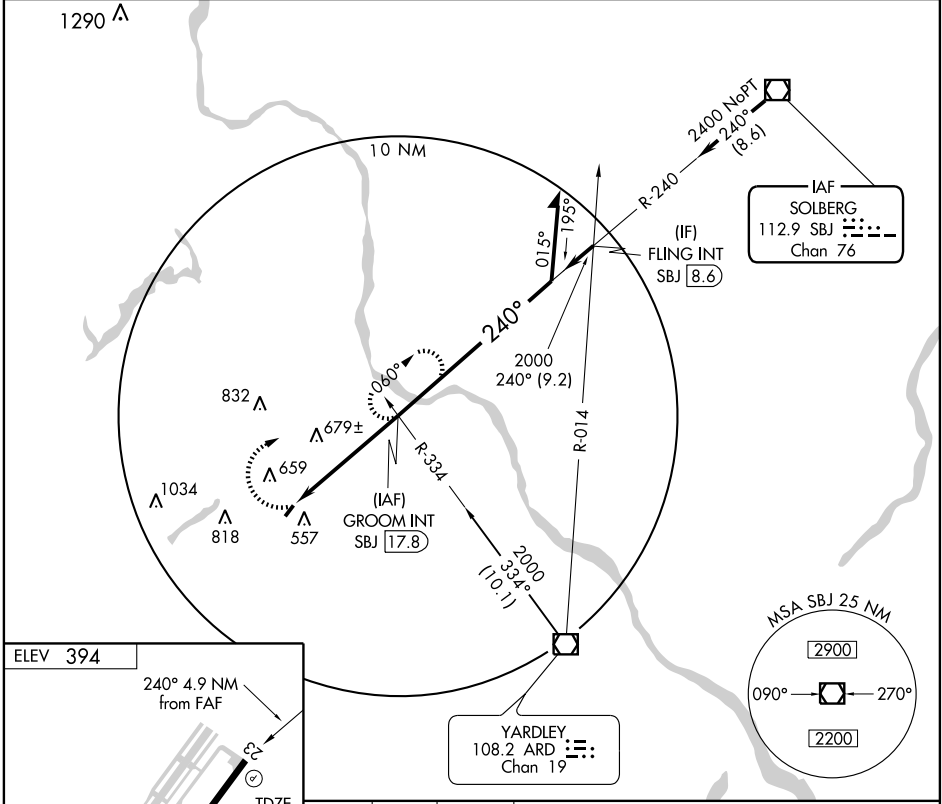
# VOR RWY 23

DOYLESTOWN (DYL)

VOR/DME SBJ <b>112.9</b> Chan <b>76</b>	APP CRS <b>240°</b>	Rwy Idg TDZE Apt Elev	<b>3004</b> <b>394</b> <b>394</b>
---	------------------------	-----------------------------	---

**▽** If local altimeter setting not received, use Penridge altimeter setting.  
**▲** MISSED APPROACH: Climbing right turn to 2000 to intercept the SBJ R-240 to GROOM Int/SBJ 17.8 DME and hold.

ASOS <b>118.875</b>	PHILADELPHIA APP CON <b>123.8 291.7</b>	CLNC DEL <b>118.55</b>	UNICOM <b>122.975</b> (CTAF) <b>0</b>
------------------------	--	---------------------------	--



FAF to MAP 4.9 NM		CATEGORY			
Knots	Min:Sec	A	B	C	D
60	4:54	1020-1 626 (700-1)	1020-1¼ 626 (700-1¼)	NA	
90	3:16	1020-1 626 (700-1)	1020-1¼ 626 (700-1¼)	NA	
120	2:27	1020-1 626 (700-1)	1020-1¼ 626 (700-1¼)	NA	
150	1:58	1020-1 626 (700-1)	1020-1¼ 626 (700-1¼)	NA	
180	1:38	1020-1 626 (700-1)	1020-1¼ 626 (700-1¼)	NA	

NE-4, 22 OCT 2009 to 19 NOV 2009

NE-4, 22 OCT 2009 to 19 NOV 2009