

RNAV (GPS) RWY 23

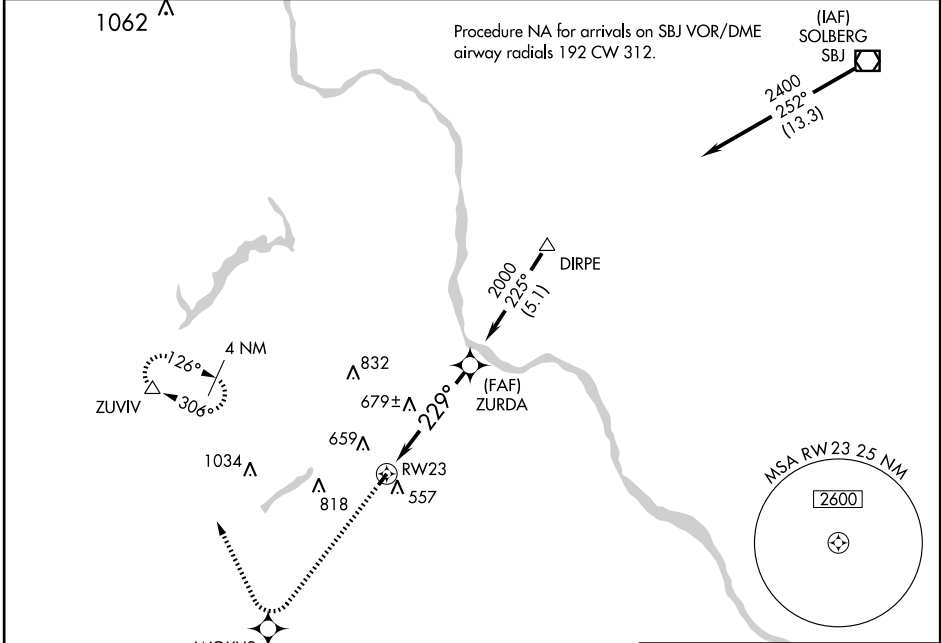
DOYLESTOWN (DYL)

| | |
|------------------------|------------------------|
| APP CRS 229° | Rwy Idg 3004 |
| | TDZE 394 |
| | Apt Elev 394 |

NA GPS or RNP-0.3 required. If local altimeter setting not received, use Pennridge altimeter setting and increase all MDAs 60 feet. DME/DME RNP-0.3 NA.

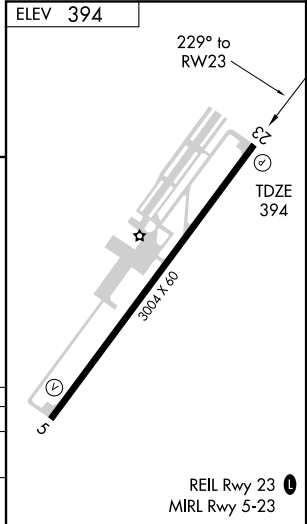
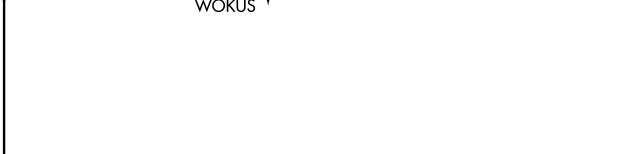
MISSED APPROACH: Climb to 3000 direct WOKUS WP and right turn via 346° track to ZUVIV and hold.

| | | | |
|------------------------|--|---------------------------|--|
| ASOS 118.875 | PHILADELPHIA APP CON 123.8 291.7 | CLNC DEL 118.55 | UNICOM 122.975 (CTAF) 0 |
|------------------------|--|---------------------------|--|



NE-4, 22 OCT 2009 to 19 NOV 2009

NE-4, 22 OCT 2009 to 19 NOV 2009



| | | | | |
|------|------------------|--------|--|-------------------|
| 3000 | WOKUS | ZUVIV | VGSI and descent angles not coincident. | DIRPE |
| ↑ | ✧ | △ | | 2400 |
| | ↘ 346° track | | | |
| | * 1 NM to RWY 23 | | | |
| | RWY 23 | ZURDA | 2000 | Procedure Turn NA |
| | 1 NM | 3.9 NM | 5.1 NM | |
| | | | * VDP NA when using Pennridge altimeter setting. | |
| | | | ≤ 3.00° TCH 40 | |

| CATEGORY | A | B | C | D |
|----------|-------|-------------|---|----|
| RNAV MDA | 940-1 | 546 (600-1) | | NA |
| CIRCLING | 960-1 | 566 (600-1) | | NA |