

VIDALIA, GEORGIA

AL-5607 (FAA)

RNAV (GPS) RWY 24

VIDALIA RGNL (VDI)

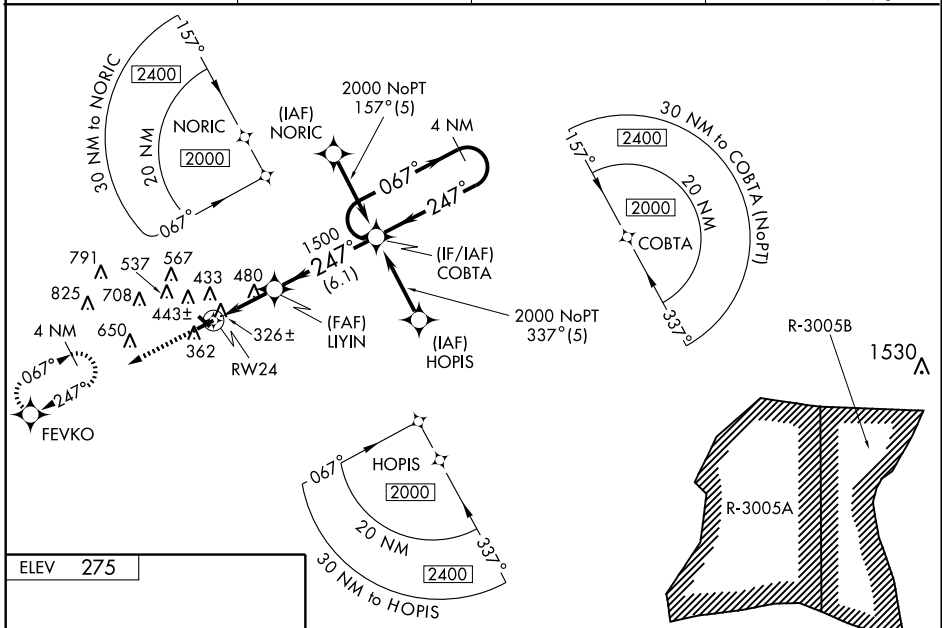
WAAS CH 69609 W24A	APP CRS 247°	Rwy Idg TDZE Apt Elev	6003 274 275
--	------------------------	-----------------------------	---

When local altimeter setting not received, use Alma altimeter setting and increase all DA 103 feet, all MDA 120 feet, LPV and LNAV/VNAV all Cats visibility 1/2 mile, LNAV Cat. C visibility 1/4 mile and Cat. D 1/2 mile, Circling Cats C and D visibility 1/4 mile. For inoperative MALSRL, increase LPV all Cats visibility to 1 mile, when using Alma altimeter setting, increase LPV all Cats visibility to 1 1/2 mile. Baro-VNAV NA when using Alma altimeter setting. For uncompensated Baro-VNAV systems, LNAV/VNAV NA below -15°C (5°F) or above 47°C (116°F). DME/DME RNP-0.3 NA. VDP NA when using Alma altimeter setting.



MISSED APPROACH:
Climb to 2000 direct FEVKO and hold.

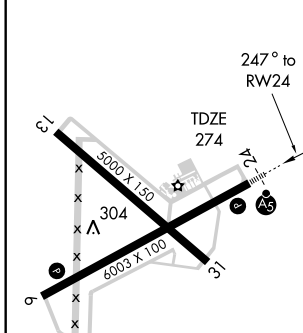
AWOS-3 119.925	JACKSONVILLE CENTER 132.3 290.4	GCO 121.725	UNICOM 122.8 (CTAF) 0
--------------------------	---	-----------------------	---------------------------------



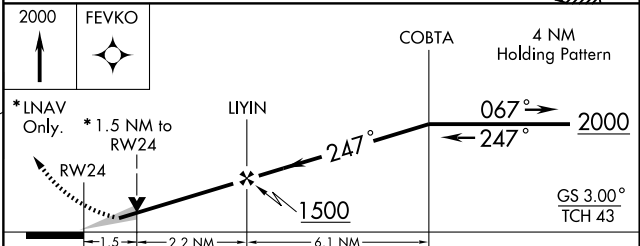
SE-4, 22 OCT 2009 to 19 NOV 2009

SE-4, 22 OCT 2009 to 19 NOV 2009

ELEV 275



HIRL Rwy 6-24 0
REIL Rwy 6 and 24



CATEGORY	A	B	C	D
LPV DA	564-1/2		290 (300-1/2)	
LNAV/VNAV DA	772-1 1/4		498 (500-1 1/4)	
LNAV MDA	780-1/2	506 (600-1/2)	780-1	506 (600-1)
CIRCLING	780-1	505 (600-1)	780-1 1/2 505 (600-1 1/2)	840-2 565 (600-2)

VIDALIA, GEORGIA
Amdt 1 08325

32°12'N-82°22'W

VIDALIA RGNL (VDI) RNAV (GPS) RWY 24