

VIDALIA, GEORGIA

AL-5607 (FAA)

# ILS or LOC/NDB RWY 24

VIDALIA RGNL (VDI)

LOC I-VDI <b>110.3</b>	APP CRS <b>247°</b>	Rwy Idg TDZE Apt Elev	<b>6003</b> <b>274</b> <b>275</b>
---------------------------	------------------------	-----------------------------	---

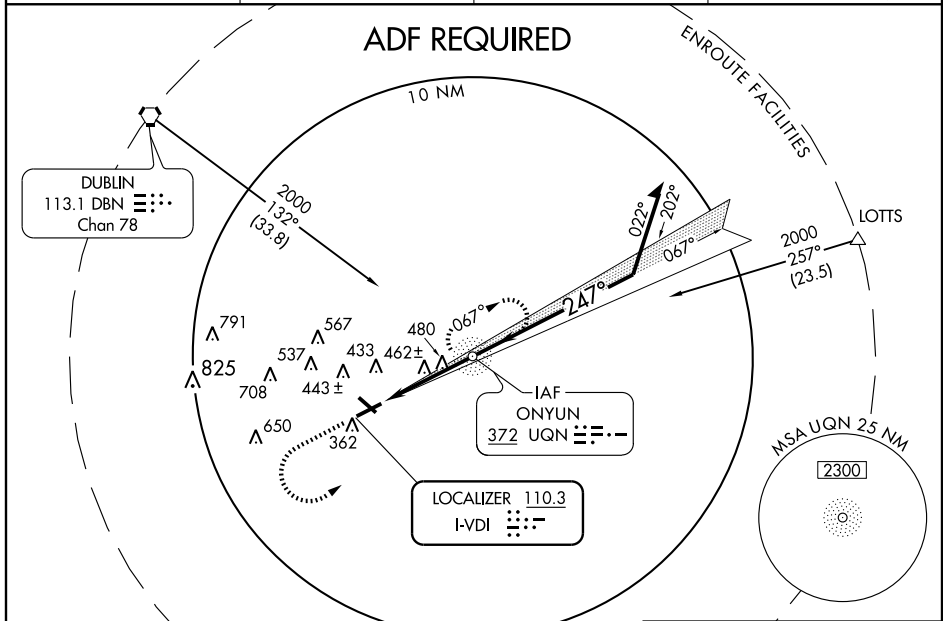
When local altimeter setting not received, use Alma altimeter setting and increase all DAs 103 feet and all MDAs 120 feet, increase S-LOC 24 Cat C and D visibilities ¼ mile. For inoperative MALSR, when using Alma altimeter setting increase S-ILS all Cats visibility ½ mile and circling Cat C ¼ mile and Cat D ½ mile.

MALSR



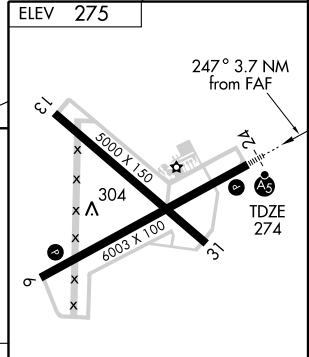
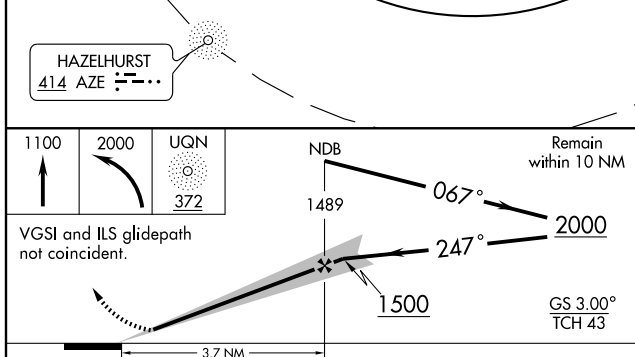
MISSED APPROACH:  
Climb to 1100 then climbing left turn to 2000 direct UGN NDB and hold.

AWOS-3 <b>119.925</b>	JACKSONVILLE CENTER <b>132.3 290.4</b>	GCO <b>121.725</b>	UNICOM <b>122.8</b> (CTAF) <b>1</b>
--------------------------	---	-----------------------	--



SE-4, 22 OCT 2009 to 19 NOV 2009

SE-4, 22 OCT 2009 to 19 NOV 2009



CATEGORY	A	B	C	D
S-ILS 24	474-½ 200 (200-½)			
S-LOC 24	740-½ 466 (500-½)	740-¾ 466 (500-¾)	740-1 466 (500-1)	
CIRCLING	780-1 505 (600-1)	780-1½ 505 (600-1½)	920-2 645 (700-2)	

HIRL Rwy 6-24 **1**

REIL Rwy 6 and 24

FAF to MAP 3.7 NM

Knots	60	90	120	150	180
Min:Sec	3:42	2:28	1:51	1:29	1:14

VIDALIA, GEORGIA  
Amdt 1 08269

32°12'N-82°22'W

# ILS or LOC/NDB RWY 24

VIDALIA RGNL (VDI)