

HOLLYWOOD, FLORIDA

AL-5606 (FAA)

# GPS RWY 9R HOLLYWOOD/ NORTH PERRY (HWO)

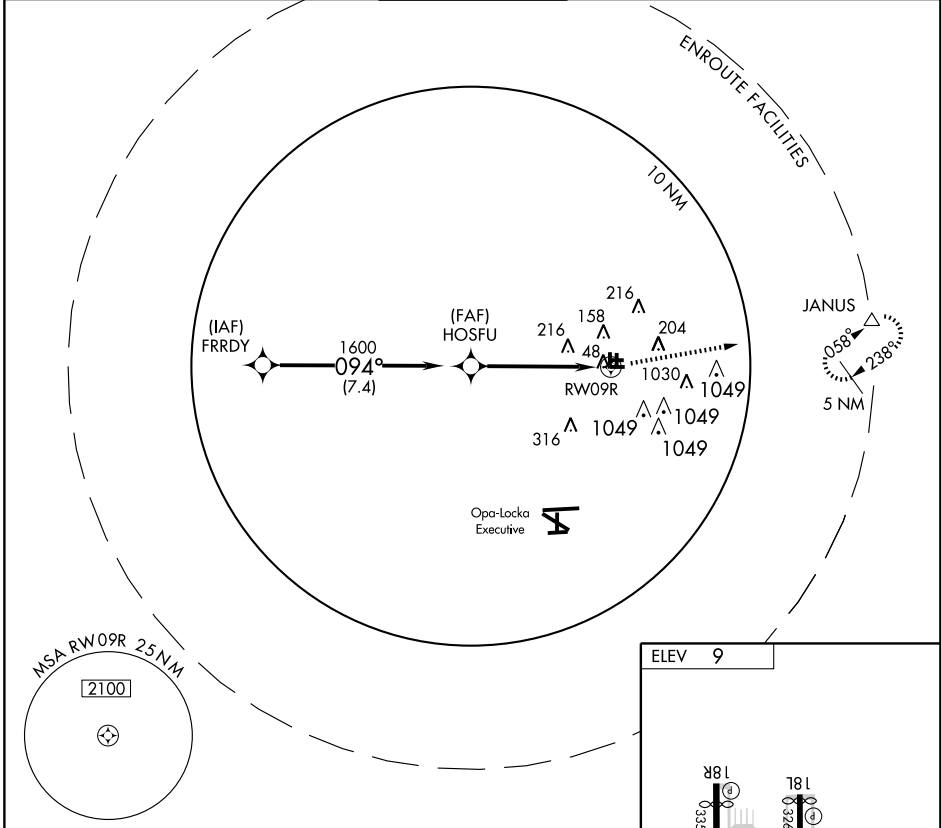
APP CRS	Rwy Idg	<b>3000</b>
<b>094°</b>	TDZE	<b>9</b>
	Apt Elev	<b>9</b>

**▽** If local altimeter setting not received, use Ft. Lauderdale-Hollywood Intl altimeter setting and increase all MDAs 20 feet.

**△** NA

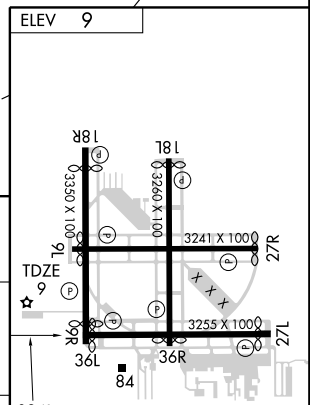
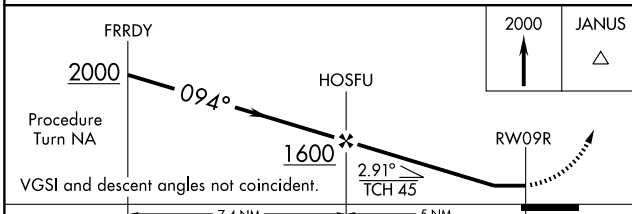
MISSED APPROACH: Climb to 2000 direct JANUS WP and hold.

ATIS <b>135.475</b>	MIAMI APP CON <b>128.6 306.975</b>	<b>NORTH PERRY TOWER*</b> <b>132.1 (CTAF) 0 254.3</b>	GND CON <b>120.45 254.3</b>	UNICOM <b>122.95</b>
------------------------	---------------------------------------	--	--------------------------------	-------------------------



SE-3, 22 OCT 2009 to 19 NOV 2009

SE-3, 22 OCT 2009 to 19 NOV 2009



CATEGORY	A	B	C	D
S-9R	920-1¼ 911 (1000-1¼)		920-2¾ 911 (1000-2¾)	NA
CIRCLING	920-1¼ 911 (1000-1¼)		920-2¾ 911 (1000-2¾)	NA

094° to RWY09R

REIL Rwy 9R  
MIRL Rwy 9R-27L and 18R-36L

HOLLYWOOD, FLORIDA  
Orig-A 09239

26° 00' N-80° 14' W

# HOLLYWOOD/ NORTH PERRY (HWO) GPS RWY 9R