

SHIRLEY, NEW YORK

AL-5603 (FAA)

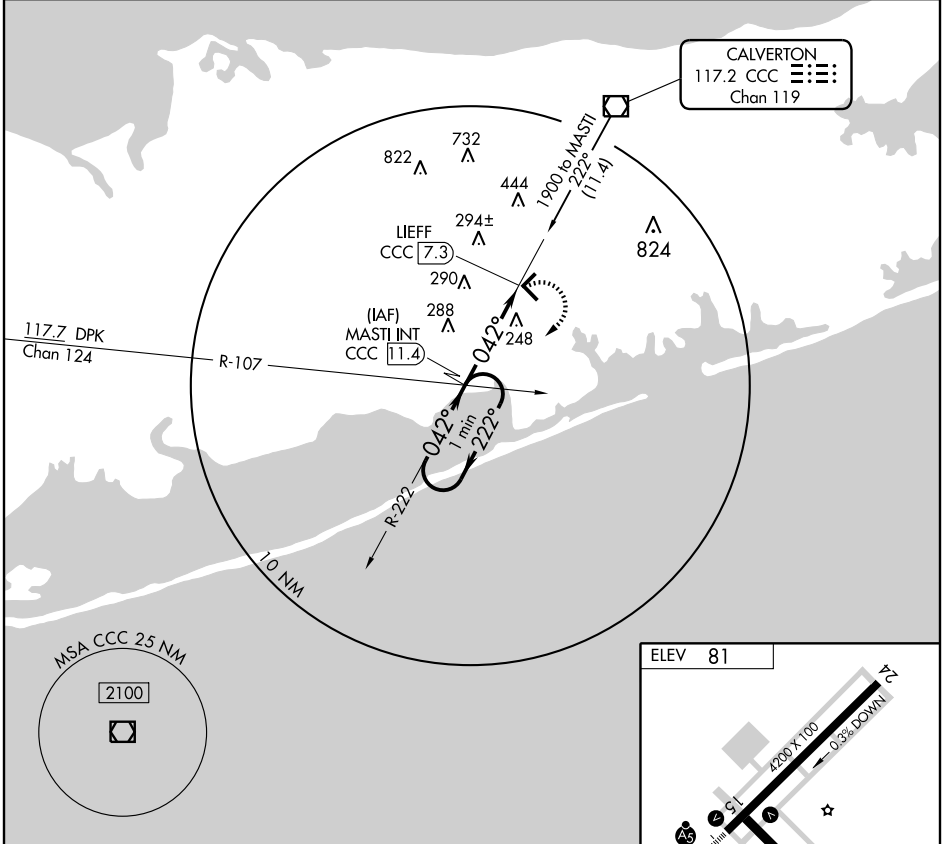
VOR/DME CCC 117.2 Chan 119	APP CRS 042°	Rwy Idg TDZE 77 Apt Elev 81	4200
--	------------------------	---	-------------

VOR RWY 6

SHIRLEY / BROOKHAVEN (HWV)

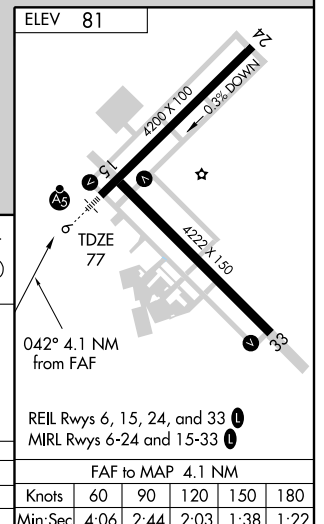
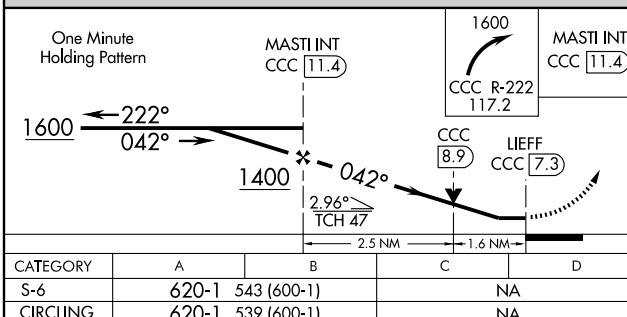
<p>▼ Inoperative table does not apply. ▲ When local altimeter setting not received, use Isip altimeter setting and increase all MDAs 40 feet.</p>	<p>MALSR </p>	<p>MISSED APPROACH: Climbing right turn to 1600 via CCC VOR/DME R-222 to MASTI Int/11.4 DME and hold.</p>
---	---------------------------	--

ASOS 119.625	NEW YORK APP CON 118.0 343.75	CLNC DEL 133.2	UNICOM 122.8 (CTAF) 0
------------------------	---	--------------------------	---------------------------------



NE-2, 22 OCT 2009 to 19 NOV 2009

NE-2, 22 OCT 2009 to 19 NOV 2009



CATEGORY	A	B	C	D	FAF to MAP 4.1 NM					
S-6	620-1	543 (600-1)		NA	Knots	60	90	120	150	180
CIRCLING	620-1	539 (600-1)		NA	Min:Sec	4:06	2:44	2:03	1:38	1:22

SHIRLEY, NEW YORK
Amdt 4 08157

40°49'N - 72°52'W

SHIRLEY / BROOKHAVEN (HWV)
VOR RWY 6