

SHIRLEY, NEW YORK

AL-5603 (FAA)

WAAS CH 40412 W33A	APP CRS 329°	Rwy Idg 4222 TDZE 67 Apt Elev 81
--	------------------------	---

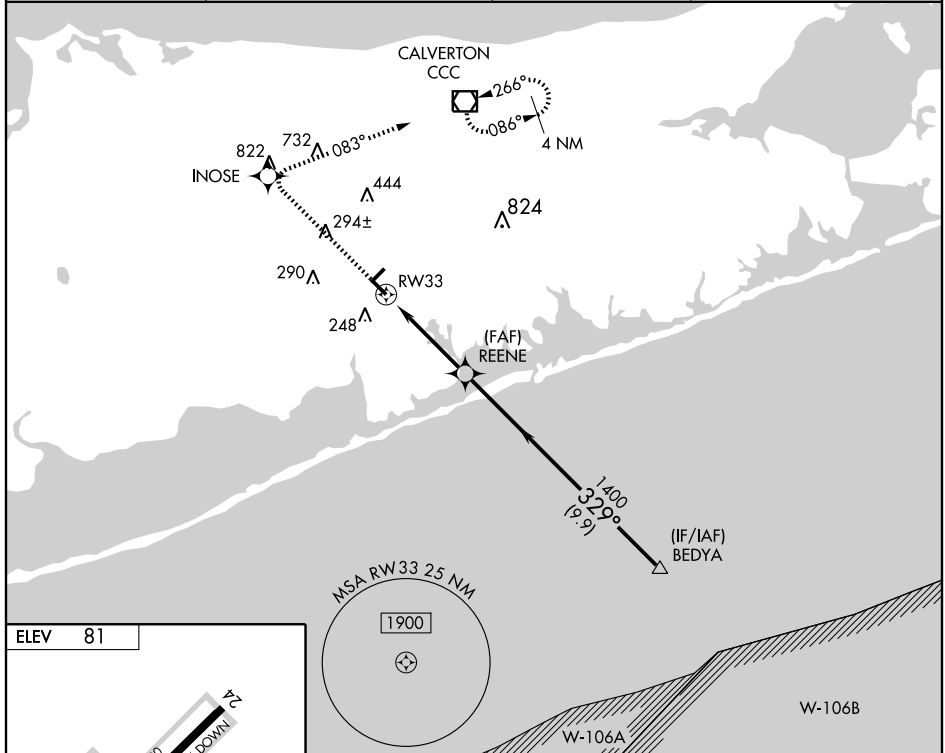
RNAV (GPS) RWY 33

SHIRLEY / BROOKHAVEN (HWV)

⚠ Baro-VNAV NA when using Islip altimeter setting. For uncompensated Baro-VNAV systems, LNAV/VNAV NA below -15°C (5°F) or above 54°C (130°F). DME/DME RNP-0.3 NA.
 When local altimeter setting not received, use Islip altimeter setting and increase all DA 28 feet and all MDA 40 feet, and increase LNAV/VNAV all Cats visibility ¼ mile.
 VDP NA when using Islip altimeter setting.

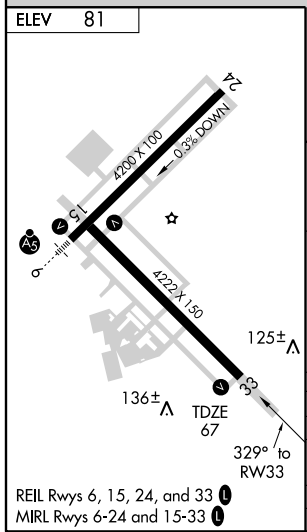
MISSED APPROACH:
 Climb to 2000 direct INOSE
 and right turn via track 083°
 to CCC VOR/DME and hold.

ASOS 119.625	NEW YORK APP CON 118.0 343.75	CLNC DEL 133.2	UNICOM 122.8 (CTAF) 0
------------------------	---	--------------------------	---------------------------------



NE-2, 22 OCT 2009 to 19 NOV 2009

NE-2, 22 OCT 2009 to 19 NOV 2009



2000	INOSE	CCC	BEDYA			
↑	✦	↷	TRK 083°	□		
*LNAV only			REENE	4000		
RW33			*1.2 NM to RW33	Procedure Turn NA		
1.2			2.8 NM	GS 3.00° TCH 46		
9.9 NM						
CATEGORY	A	B	C	D		
LPV DA	346-1	279 (300-1)	NA			
LNAV/VNAV DA	449-1¼	382 (400-1¼)	NA			
LNAV MDA	500-1	433 (500-1)	NA			
CIRCLING	560-1	479 (500-1)	NA			

SHIRLEY, NEW YORK
 Orig 09183

40°49'N - 72°52'W

RNAV (GPS) RWY 33