

SHIRLEY, NEW YORK

AL-5603 (FAA)

RNAV (GPS) RWY 15

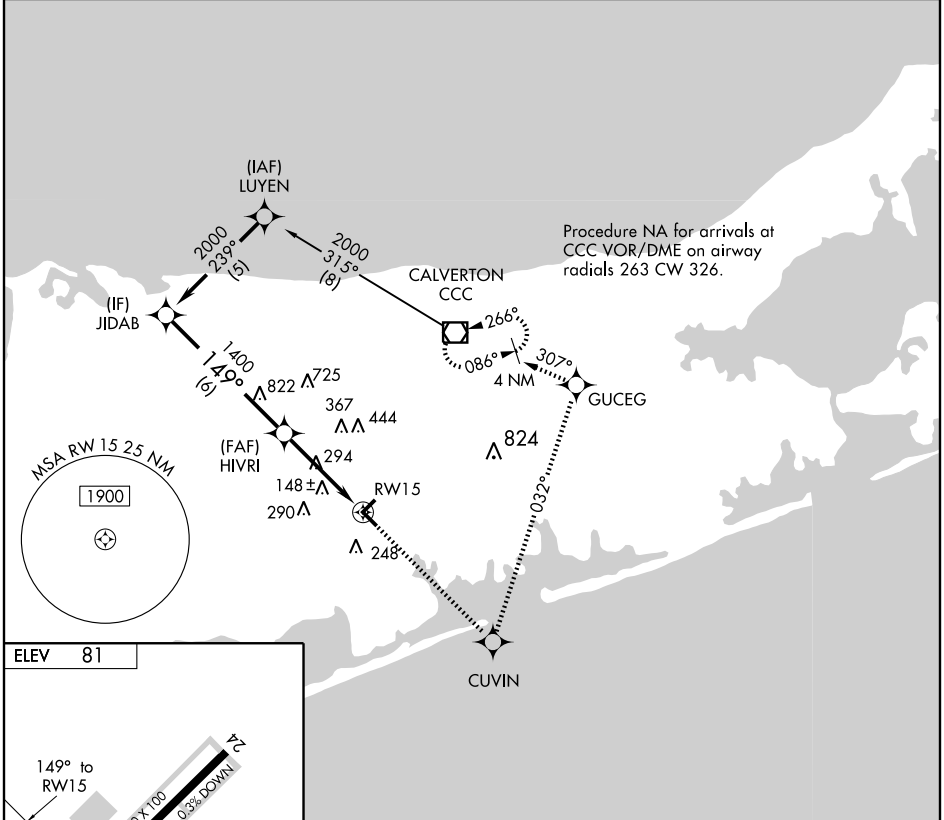
SHIRLEY / BROOKHAVEN (HWV)

WAAS CH 90402 W15A	APP CRS 149°	Rwy Idg 4222 TDZE 70 Apr Elev 81
--	------------------------	---

⚠ DME/DME RNP-0.3 NA. Visibility reduction by helicopters NA. If local altimeter setting not received, use Isip altimeter setting and increase LPV DA to 420 and all MDAs 40 feet. VDP NA when using Isip altimeter setting.

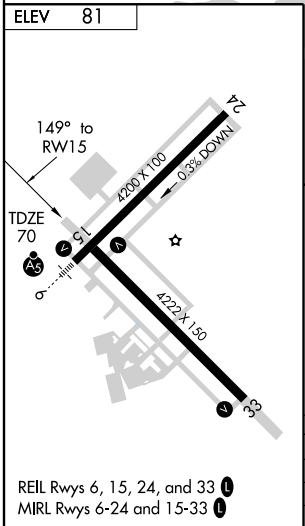
MISSED APPROACH: Climb to 2000 direct CUVIN and left turn via 032° track to GUCEG and 307° track to CCC VOR/DME and hold.

ASOS 119.625	NEW YORK APP CON 118.0 343.75	CLNC DEL 133.2	UNICOM 122.8 (CTAF) 0
------------------------	---	--------------------------	---------------------------------



NE-2, 22 OCT 2009 to 19 NOV 2009

NE-2, 22 OCT 2009 to 19 NOV 2009



Procedure Turn NA	JIDAB	2000	CUVIN	GUCEG	CCC
		↑	✧	✧	◻
			TRK 032°	TRK 307°	
GS 3.00° TCH 43	2000	149°	HIVRI	* 1.4 NM to RW15	RW15
				* LNAV only.	
			- 6 NM	2.6 NM	1.4
CATEGORY	A	B	C	D	
LPV DA	392-1¼	322 (400-1¼)			NA
LNAV MDA	560-1	490 (500-1)			NA
CIRCLING	560-1	479 (500-1)			NA

SHIRLEY, NEW YORK
Orig 07354

40°49'N - 72°52'W

SHIRLEY / BROOKHAVEN (HWV) RNAV (GPS) RWY 15