

SHIRLEY, NEW YORK

AL-5603 (FAA)

# ILS RWY 6

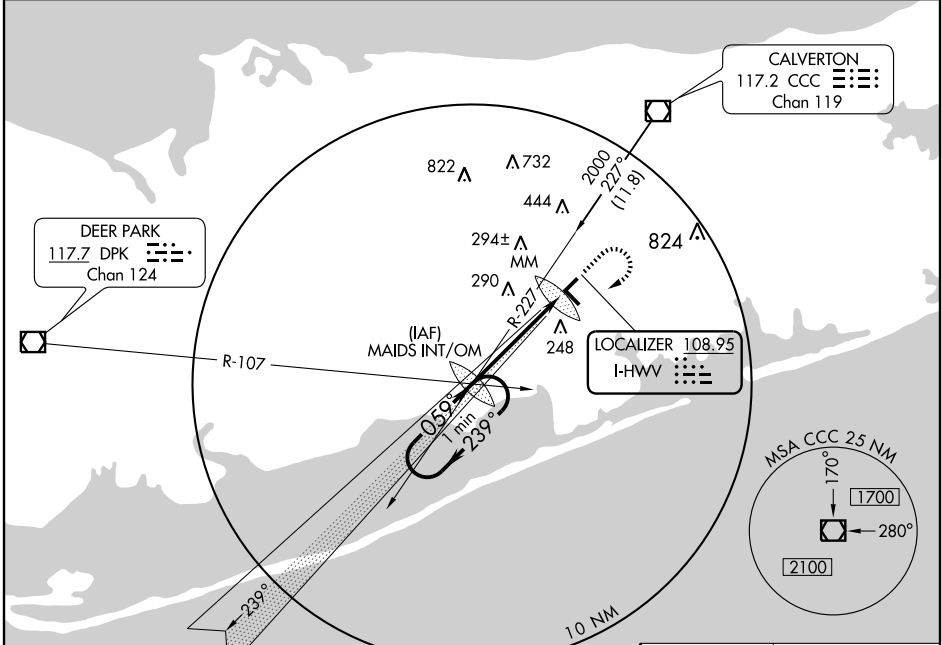
SHIRLEY / BROOKHAVEN (HWV)

LOC I-HWV <b>108.95</b>	APP CRS <b>059°</b>	Rwy Idg TDZE Apt Elev	<b>4200</b> <b>81</b> <b>82</b>
----------------------------	------------------------	-----------------------------	---------------------------------------

Use Long Island MacArthur altimeter setting.  
 ILS unusable from MM inbound.

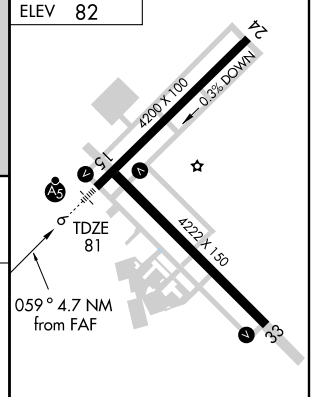
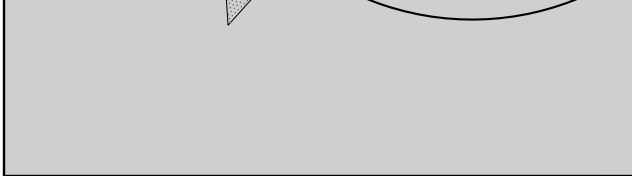
**MISSED APPROACH:** Climb to 600, then climbing right turn to 2000 via heading 270° and CCC VOR/DME R-227 to MAIDS Int and hold.

ASOS <b>119.625</b>	NEW YORK APP CON <b>118.0 343.75</b>	CLNC DEL <b>133.2</b>	UNICOM <b>122.8 (CTAF) 0</b>
------------------------	---	--------------------------	---------------------------------



NE-2, 22 OCT 2009 to 19 NOV 2009

NE-2, 22 OCT 2009 to 19 NOV 2009



CATEGORY	A	B	C	D
S-ILS 6	309-½	228 (300-½)		NA
S-LOC 6	560-½	479 (500-½)		NA
CIRCLING	600-1	518 (600-1)		NA

REIL Rwy 6, 15, 24, and 33  
MIRL Rwy 6-24 and 15-33

FAF to MAP 4.2 NM					
Knots	60	90	120	150	180
Min:Sec	4:12	2:48	2:06	1:41	1:24

SHIRLEY, NEW YORK  
Amdt 1 07354

40°49'N - 72°52'W

SHIRLEY / BROOKHAVEN (HWV)  
**ILS RWY 6**