

# VOR or GPS-A

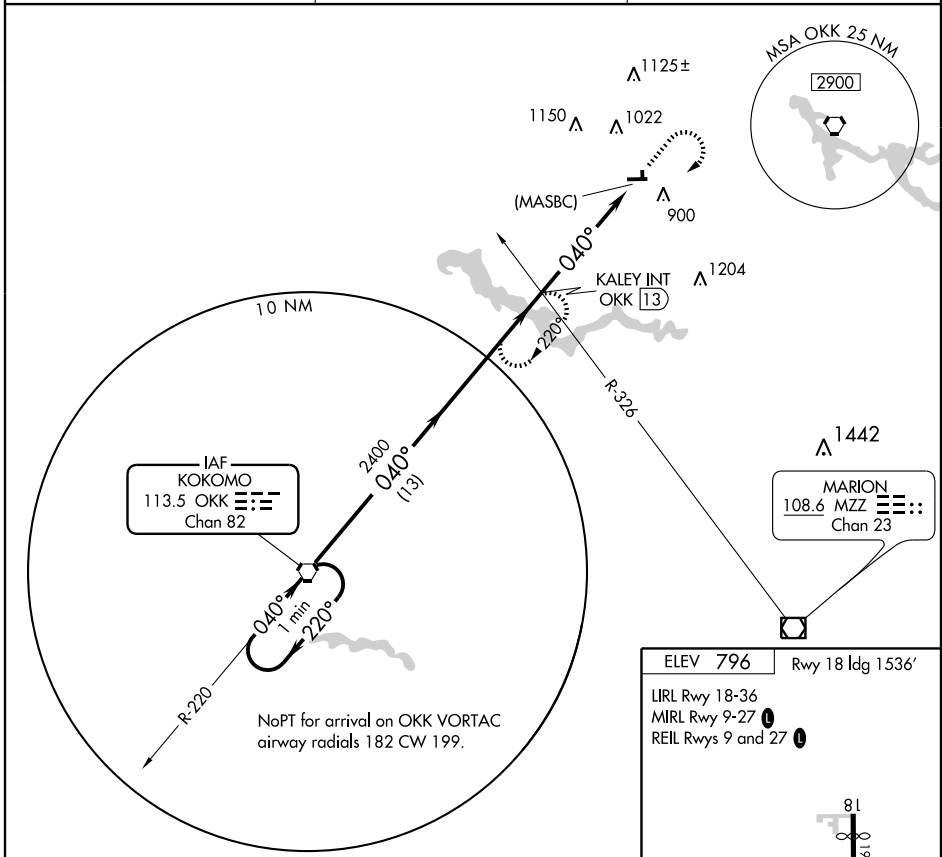
WABASH MUNI (IWH)

VORTAC OKK <b>113.5</b> Chan <b>82</b>	APP CRS <b>040°</b>	Rwy Idg TDZE Apt Elev <b>N/A</b> <b>N/A</b> <b>796</b>
--	------------------------	---

**▲ NA** Use Kokomo altimeter setting; if not received, use Fort Wayne altimeter setting and increase all MDAs 40 feet.

MISSED APPROACH: Climb to 2400 then right turn via OKK R-040 to KALEY and hold.

KOKOMO AWOS-3 <b>113.5</b>	GRISSOM APP CON * <b>121.05 379.3</b>	UNICOM <b>122.8</b> (CTAF) <b>①</b>
-------------------------------	--	--



EC-2, 22 OCT 2009 to 19 NOV 2009

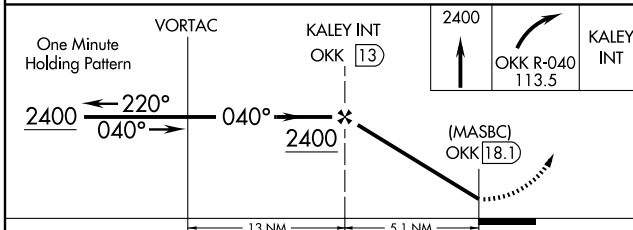
EC-2, 22 OCT 2009 to 19 NOV 2009

ELEV 796 Rwy 18 Idg 1536'

LIRL Rwy 18-36  
MIRL Rwy 9-27 **①**  
REIL Rwys 9 and 27 **①**

040° 5.1 NM from FAF

FAF to MAP 5.1 NM	
Knots	60 90 120 150 180
Min:Sec	5:06 3:24 2:33 2:02 1:42



CATEGORY	A	B	C	D	FAF to MAP 5.1 NM					
CIRCLING	1300-1	505 (600-1)	1420-1¾ 625 (700-1¾)	NA	Knots	60	90	120	150	180
					Min:Sec	5:06	3:24	2:33	2:02	1:42