


VOR RWY 4

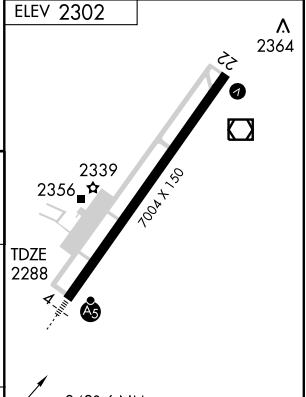
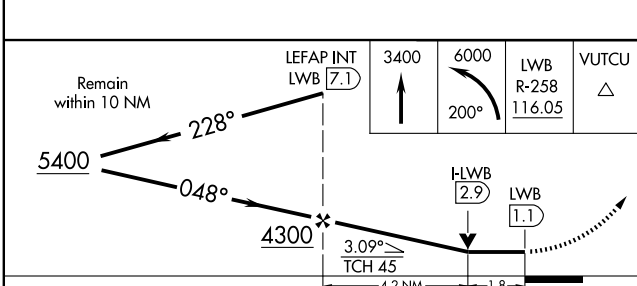
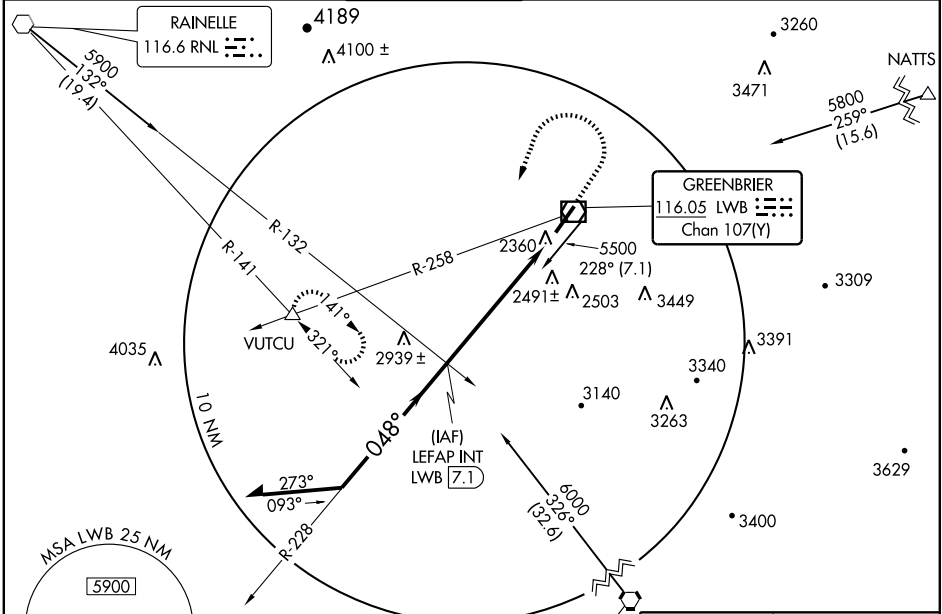
LEWISBURG/ GREENBRIER VALLEY (LWB)

VOR/DME LWB 116.05 Chan 107 (Y)	APP CRS 048°	Rwy Idg TDZE Apt Elev	7004 2288 2302
---	------------------------	-----------------------------	---

⚠ Visibility reduction by helicopters NA. When local altimeter setting not received, use Beckley altimeter setting and increase all MDA 120 feet, S-4 Cat C and Cat D and Circling Cat C visibility ½ mile. For inoperative MALS, increase S-4 Cats A and B visibility ¼ mile. For inoperative MALS, when using Beckley altimeter setting, increase S-4 Cat A visibility ¼ mile.

MALS  MISSED APPROACH: Climb to 3400, then climbing left turn to 6000 via heading 200° and LWB VOR/DME R-258 to VUTCU INT and hold, continue climb-in-hold 6000.

AWOS-3 121.4	WASHINGTON CENTER 134.4 353.9	LEWISBURG TOWER* 118.9 (CTAF) 0	GND CON 121.9	CLNC DEL 120.85 (When tower closed)	UNICOM 122.95
------------------------	---	---	-------------------------	--	-------------------------



CATEGORY	A	B	C	D
S-4	2920-¾ 632 (700-¾)	2920-1¼ 632 (700-1¼)	2920-1½ 632 (700-1½)	2920-1½ 632 (700-1½)
CIRCLING	2920-1 618 (700-1)	3080-2¼ 778 (800-2¼)	3280-3 978 (1000-3)	

REIL Rwy 22		HIRL Rwy 4-22 0	
FAF to MAP 6 NM			
Knots	60	90	120 150 180
Min:Sec	6:00	4:00	3:00 2:24 2:00

NE-4, 22 OCT 2009 to 19 NOV 2009

NE-4, 22 OCT 2009 to 19 NOV 2009