

APP CRS	Rwy Idg	<b>7004</b>
<b>223°</b>	TDZE	<b>2302</b>
	Apt Elev	<b>2302</b>

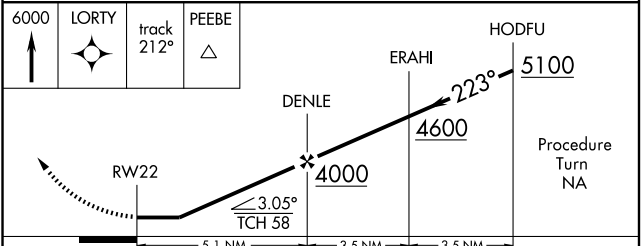
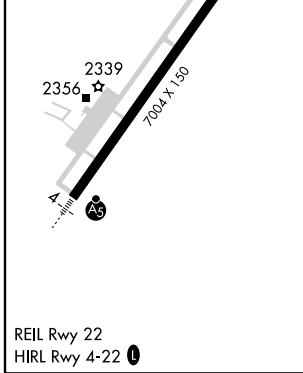
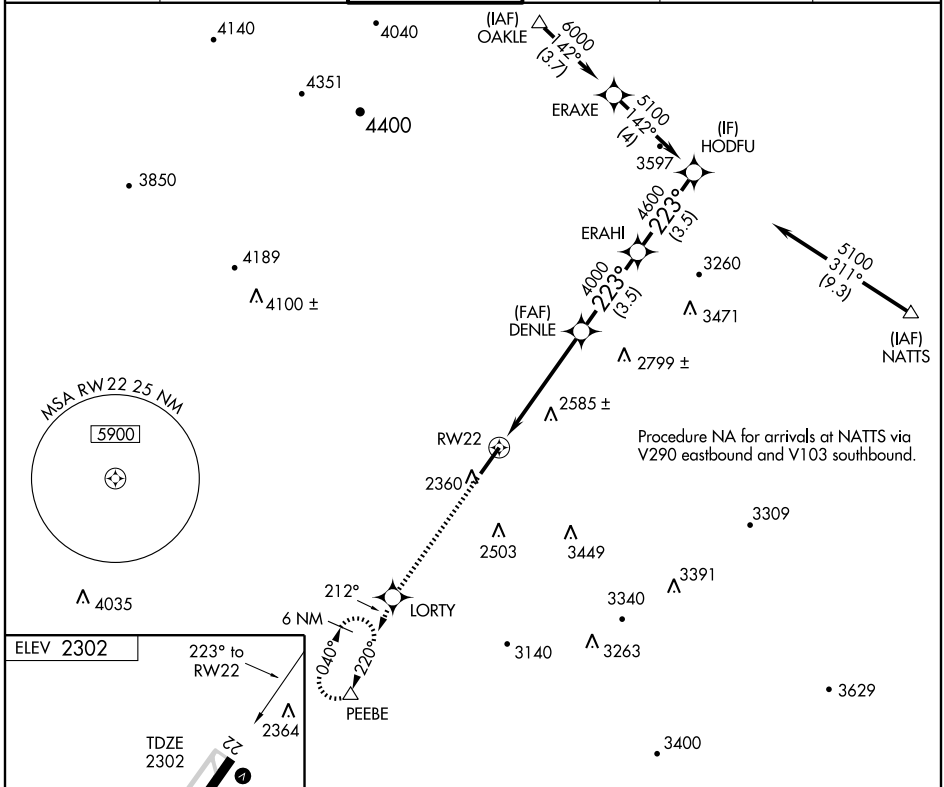
# RNAV (GPS) RWY 22

LEWISBURG/GREENBRIER VALLEY (LWB)

**▼** DME/DME RNP -0.3 NA. Visibility reduction by helicopters NA.  
**▲** When local altimeter setting not received, use Beckley altimeter setting and increase all MDA 120 feet, LNAV Cat C and Cat D visibility ½ mile, and Circling Cat C visibility ½ mile.

MISSED APPROACH: Climb to 6000 direct LORTY and via track 212° to PEEBE and hold, continue climb-in-hold to 6000.

AWOS-3 <b>121.4</b>	WASHINGTON CENTER <b>134.4 353.9</b>	<b>LEWISBURG TOWER*</b> <b>118.9 (CTAF) 0</b>	GND CON <b>121.9</b>	CLNC DEL <b>120.85</b> (When tower closed)	UNICOM <b>122.95</b>
------------------------	---	--	-------------------------	--	-------------------------



CATEGORY	A	B	C	D
LNAV MDA	2760-1 458 (500-1)	2760-1¼ 458 (500-1¼)	2760-1½ 458 (500-1½)	2760-1½ 458 (500-1½)
CIRCLING	2820-1 518 (600-1)	2900-1 598 (600-1)	3080-2¼ 778 (800-2¼)	3280-3 978 (1000-3)

NE-4, 22 OCT 2009 to 19 NOV 2009

NE-4, 22 OCT 2009 to 19 NOV 2009