

WAAS CH <b>93505</b> <b>W24A</b>	APP CRS <b>242°</b>	Rwy Idg TDZE Apt Elev	<b>5054</b> <b>20</b> <b>20</b>
--	------------------------	-----------------------------	---------------------------------------

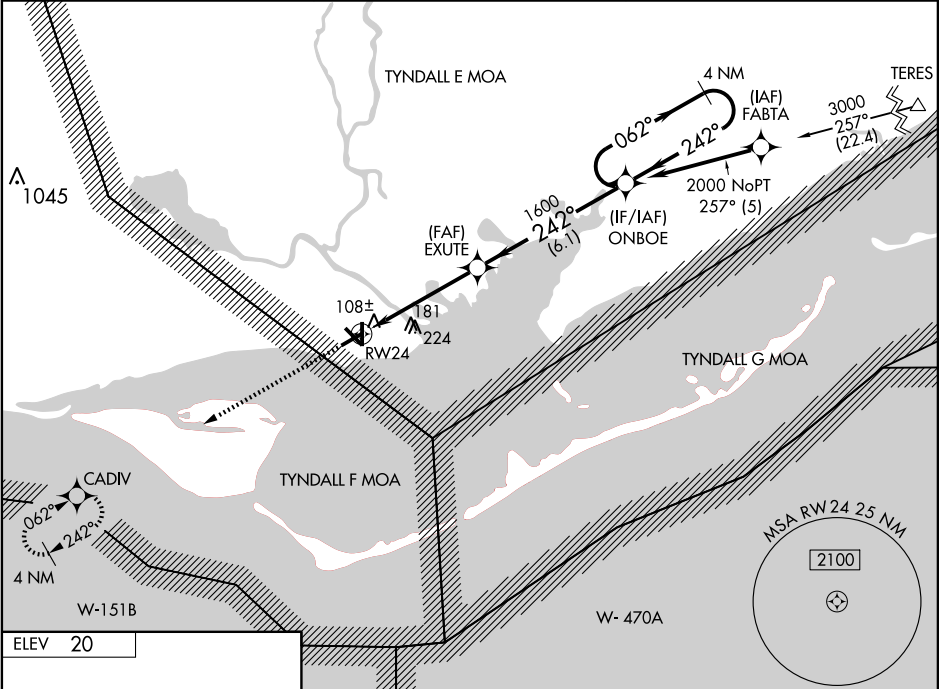
# RNAV (GPS) RWY 24

APALACHICOLA RGNL (AAF)

**⚠** If local altimeter setting not received, use Panama City altimeter setting and increase LPV DA to 463 feet, LNAV/VNAV DA to 482 feet, and all MDAs 120 feet. For uncompensated Baro-VNAV systems, LNAV/VNAV NA below -1.5° C (5° F) or above 54° C (130° F). Visibility reduction by helicopters NA. DME/DME RNP-0.3 NA.

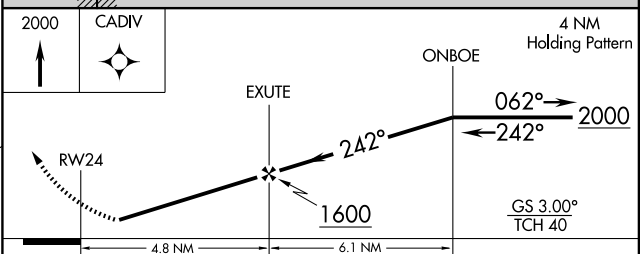
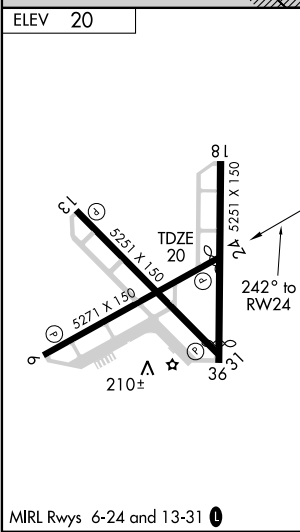
**MISSED APPROACH:**  
Climb to 2000 direct CADIV and hold.

ASOS <b>119.925</b>	TYNDALL APP CON* <b>124.15 341.7</b>	UNICOM <b>122.8 (CTAF) 0</b>
------------------------	---	---------------------------------



SE-3, 22 OCT 2009 to 19 NOV 2009

SE-3, 22 OCT 2009 to 19 NOV 2009



CATEGORY	A	B	C	D
LPV DA	359-1¼	339 (400-1¼)		NA
LNAV/VNAV DA	378-1¼	358 (400-1¼)		NA
LNAV MDA	500-1	480 (500-1)	500-1¼ 480 (500-1¼)	NA
CIRCLING	520-1	500 (500-1)	520-1½ 500 (500-1½)	NA