

VOR RAL 112.4	APP CRS 264°	Rwy Idg 4858
		TDZE 636
		Apt Elev 650

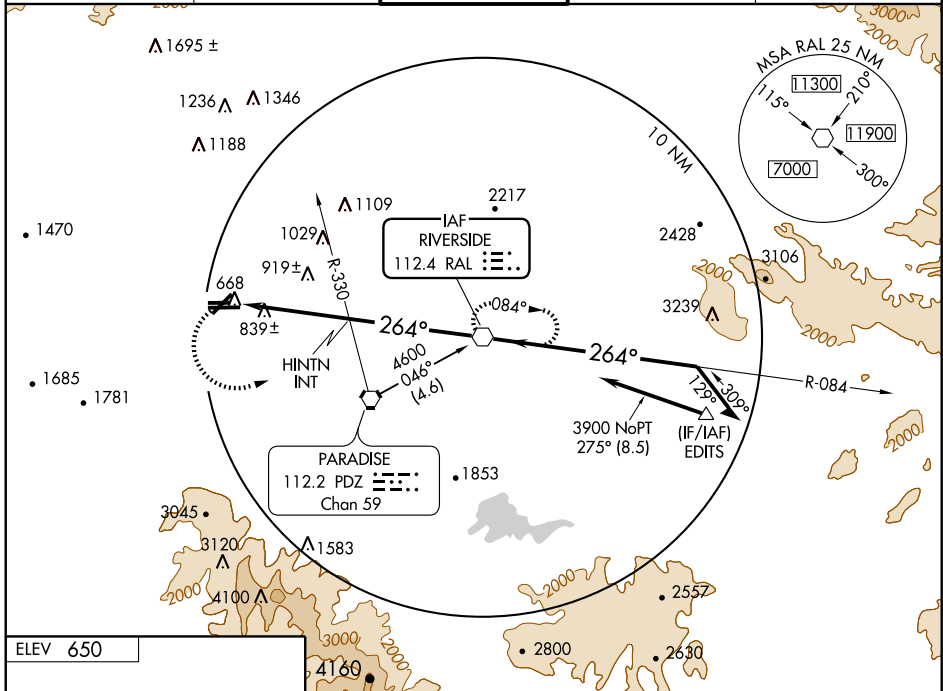
VOR RWY 26R

CHINO (CNO)

NA Visibility reduction by helicopters NA.
When local altimeter setting not received, use Riverside Muni altimeter setting and increase all MDA 60 feet, increase HINTN FIX minimums S-26R and circling Cat B, C, and D visibility ¼ mile.

MISSED APPROACH: Climbing left turn to 4500 direct RAL VOR and hold, continue climb-in-hold to 4500.

ATIS 125.85	SOCAL APP CON 135.4 377.125	CHINO TOWER* 118.5 (CTAF) 0	GND CON 121.6	UNICOM 122.95
-----------------------	---------------------------------------	--	-------------------------	-------------------------



SW-3, 22 OCT 2009 to 19 NOV 2009

SW-3, 22 OCT 2009 to 19 NOV 2009

ELEV 650

REIL Rwy 3 and 21
MIRL Rwy 3-21 and 8R-26L
HIRL Rwy 8L-26R

FAF to MAP 9.1 NM

Knots	60	90	120	150	180
Min:Sec	9:06	6:04	4:33	3:38	3:02

4500 RAL 112.4 VGSI and descent angles not coincident.

VOR 084° 4600

HINTN INT ≤ 3.32° TCH 53

2140* 3900 *2200 when using Riverside Muni altimeter setting.

Remain within 10 NM

CATEGORY	A	B	C	D
S-26R	2140-1¼ 1504 (1500-1¼)	2140-1½ 1504 (1500-1½)	2140-3	1504 (1500-3)
CIRCLING	2140-1¼ 1490 (1500-1¼)	2140-1½ 1490 (1500-1½)	2140-3	1490 (1500-3)
HINTN FIX MINIMUMS				
S-26R	1320-1	684 (700-1)	1320-2 684 (700-2)	1320-2¼ 684 (700-2¼)
CIRCLING	1320-1	670 (700-1)	1320-2 670 (700-2)	1320-2¼ 670 (700-2¼)