

MELFA, VIRGINIA

AL-5598 (FAA)

WAAS CH <b>42905</b> <b>W03A</b>	APP CRS <b>034°</b>	Rwy Idg TDZE Apt Elev	<b>5000</b> <b>47</b> <b>47</b>
--	------------------------	-----------------------------	---------------------------------------

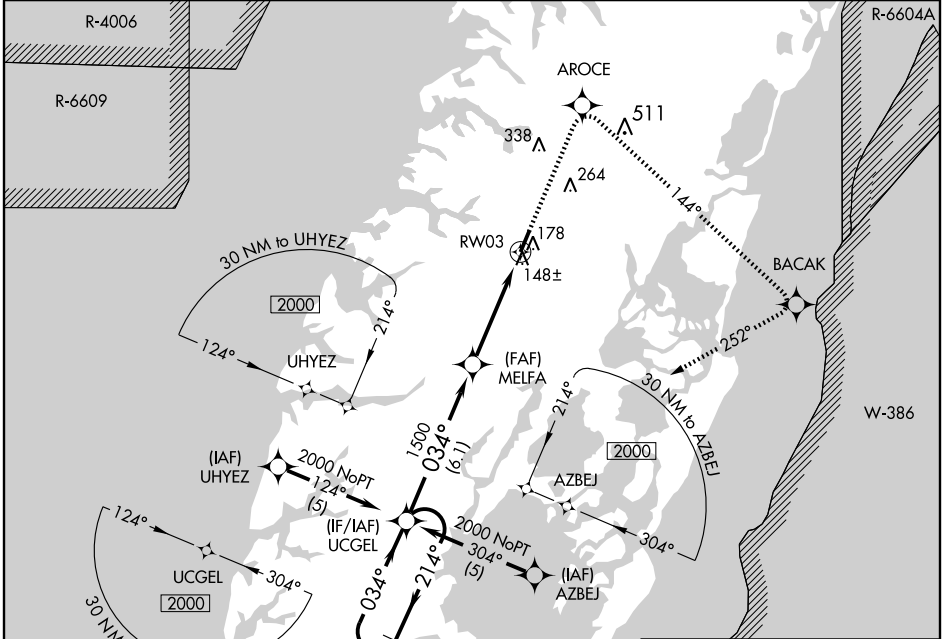
# RNAV (GPS) RWY 3

MELFA / ACCOMACK COUNTY (MFV)

**T** If local altimeter setting not received, use Wallops Island altimeter setting and increase all DAs/MDAs 60 feet. Baro-VNAV NA when using Wallops Island altimeter setting.  
**A** For uncompensated Baro-VNAV systems, LNAV/VNAV NA below -1.5°C (5°F) or above 48°C (118°F). Visibility reduction by helicopters NA. DME/DME RNP-0.3 NA.

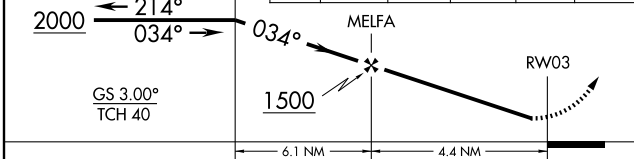
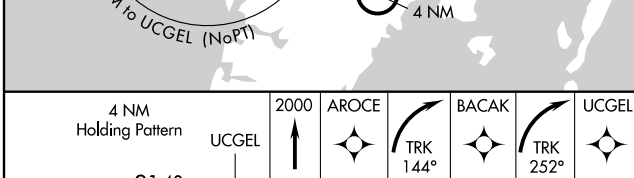
**MISSED APPROACH:** Climb to 2000 direct AROCE and right turn via 144° track to BACAK and right turn via 252° track to UCGEL and hold.

AWOS-3 <b>118.175</b>	PATUXENT APP CON <b>127.95 314.0</b>	GCO <b>135.075</b>	UNICOM <b>122.8 (CTAF)</b>
--------------------------	---	-----------------------	-------------------------------

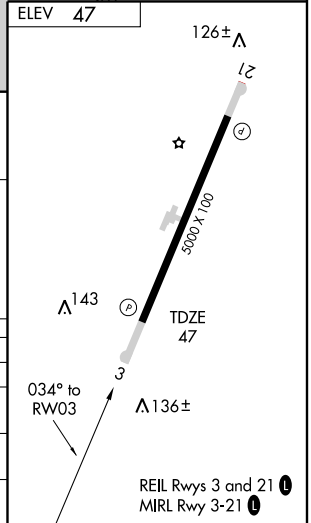


NE-3, 22 OCT 2009 to 19 NOV 2009

NE-3, 22 OCT 2009 to 19 NOV 2009



CATEGORY	A	B	C	D
LPV DA		346-1	299 (300-1)	
LNAV/DA VNAV		408-1½	361 (400-1½)	
LNAV MDA	440-1	393 (400-1)		440-1½ 393 (400-1½)
CIRCLING	480-1 433 (500-1)	560-1 513 (600-1)	560-1½ 513 (600-1½)	620-2 573 (600-2)



MELFA, VIRGINIA  
Amdt 1 09239

37°39'N - 75°46'W

# RNAV (GPS) RWY 3