

# RNAV (GPS) RWY 21

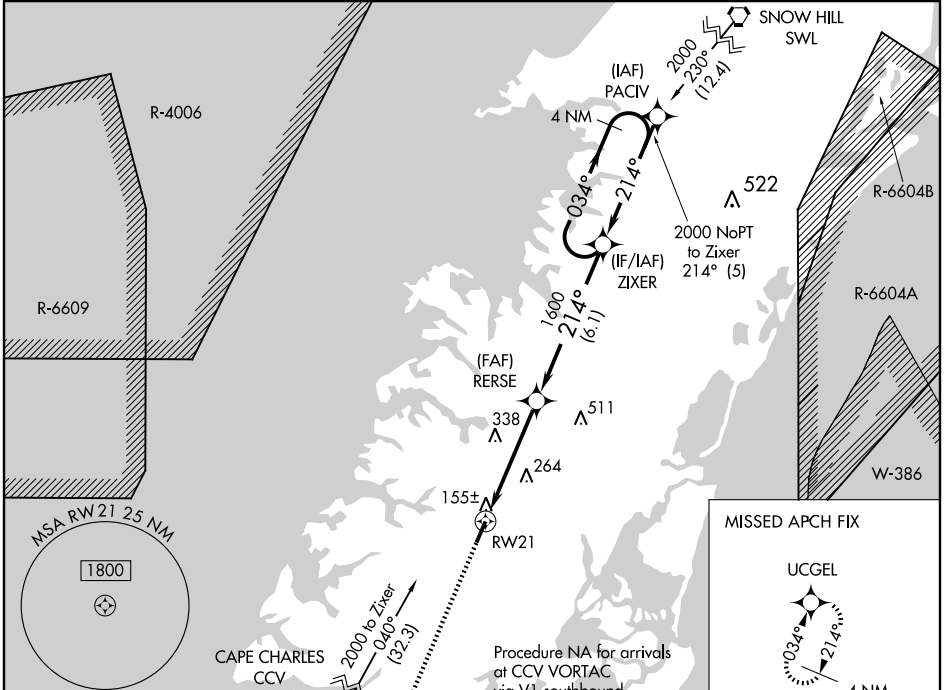
MELFA / ACCOMACK COUNTY (MFV)

WAAS CH <b>69505</b> <b>W21A</b>	APP CRS <b>214°</b>	Rwy Idg TDZE <b>47</b> Apt Elev <b>47</b>	<b>5000</b>
--	------------------------	---	-------------

**▼** If local altimeter setting not received, use Wallops Island altimeter setting and increase all DAs/MDAs 60 feet. Baro-VNAV NA when using Wallops Island altimeter setting.  
**▲** For uncompensated Baro-VNAV systems, LNAV/VNAV NA below -15°C (5°F) or above 48°C (118°F). Visibility reduction by helicopters NA. DME/DME RNP-0.3 NA.

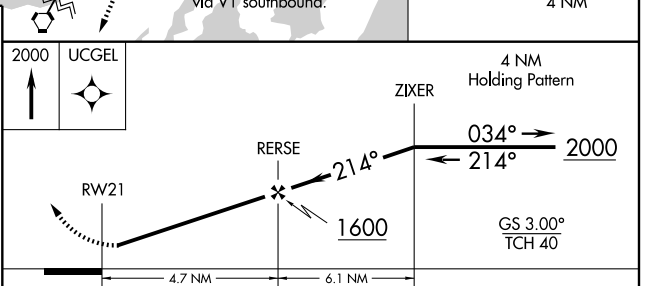
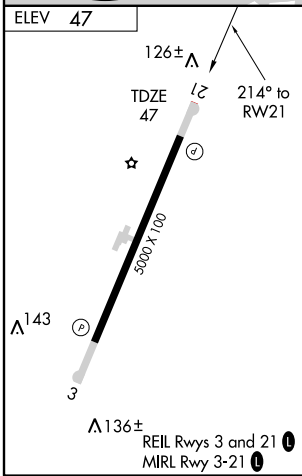
**MISSED APPROACH:**  
Climb to 2000 direct UCGEL and hold.

AWOS-3 <b>118.175</b>	PATUXENT APP CON <b>127.95 314.0</b>	GCO <b>135.075</b>	UNICOM <b>122.8 (CTAF) 0</b>
--------------------------	---	-----------------------	---------------------------------



NE-3, 22 OCT 2009 to 19 NOV 2009

NE-3, 22 OCT 2009 to 19 NOV 2009



CATEGORY	A	B	C	D
LPV DA	362-1 315 (400-1)			
LNAV/DA	545-1¾ 498 (500-1¾)			
LNAV MDA	600-1	553 (600-1)	600-1½ 553 (600-1½)	600-1¾ 553 (600-1¾)
CIRCLING	600-1	553 (600-1)	600-1½ 553 (600-1½)	620-2 573 (600-2)