

MELFA, VIRGINIA

AL-5598 (FAA)

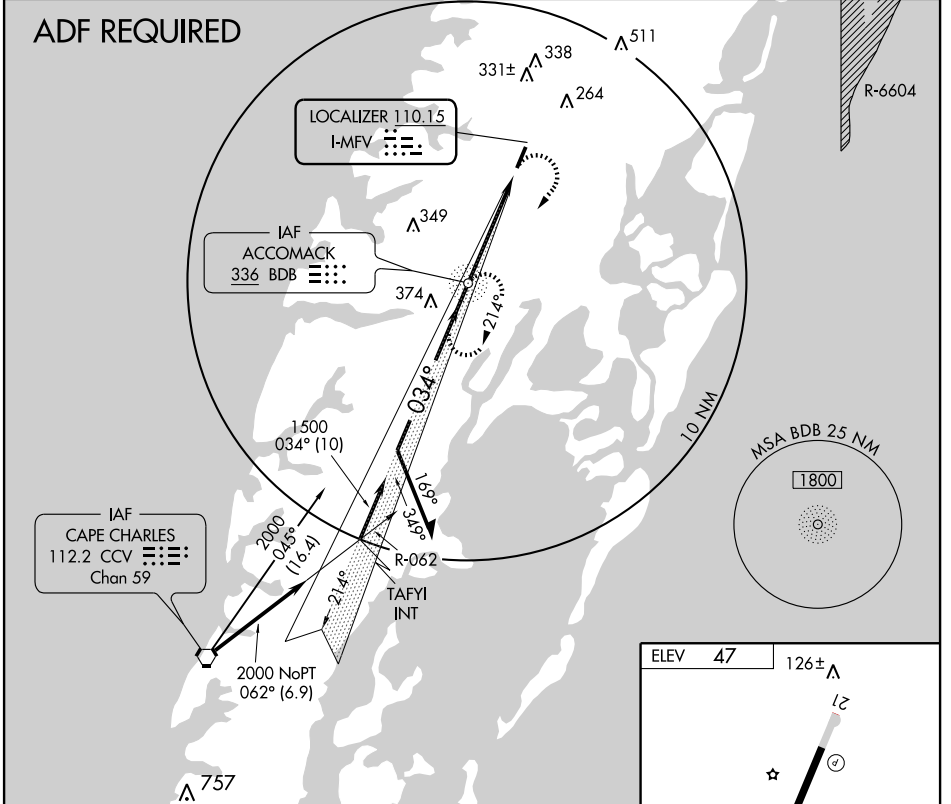
LOC RWY 3

MELFA / ACCOMACK COUNTY (MFLV)

LOC I-MFV 110.15	APP CRS 034°	Rwy ldg TDZE Apt Elev	5000 47 47
----------------------------	------------------------	-----------------------------	---------------------------------------

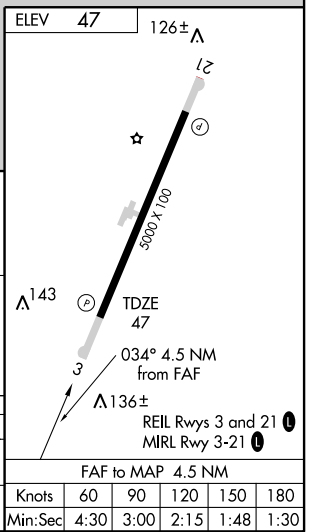
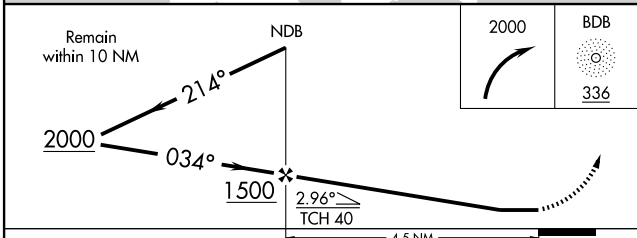
<p>▼ ▲ NA</p>		<p>MISSED APPROACH: Climbing right turn to 2000 direct BDB NDB and hold.</p>	
-------------------	--	--	--

AWOS-3 118.175	PATUXENT APP CON 127.95 314.0	GCO 135.075	UNICOM 122.8 (CTAF) 0
--------------------------	---	-----------------------	---------------------------------



NE-3, 22 OCT 2009 to 19 NOV 2009

NE-3, 22 OCT 2009 to 19 NOV 2009



CATEGORY	A	B	C	D
S-LOC 3		400-1	353 (400-1)	
CIRCLING	480-1 433 (500-1)	560-1 513 (600-1)	560-1½ 513 (600-1½)	620-2 573 (600-2)

MELFA, VIRGINIA
Orig 09239

37°39'N - 75°46'W

MELFA / ACCOMACK COUNTY (MFLV)
LOC RWY 3