

RIO VISTA, CALIFORNIA

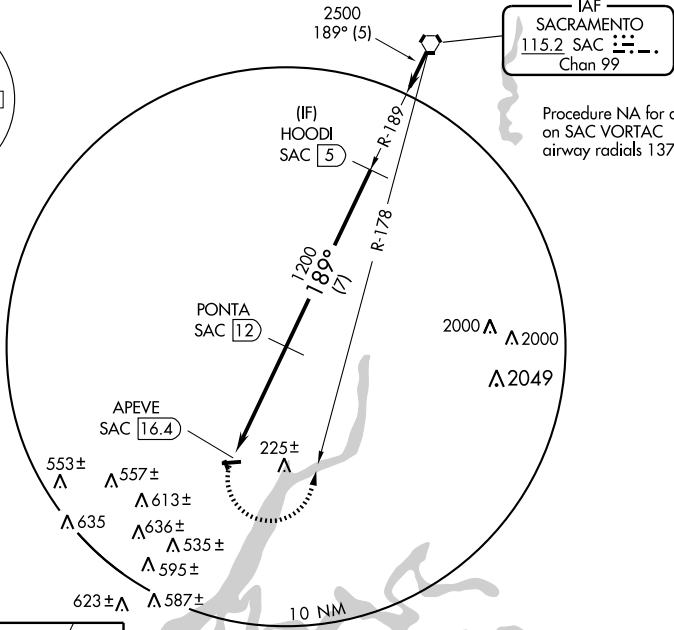
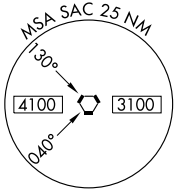
AL-5597 (FAA)

VOR/DME-A
RIO VISTA MUNI (O88)

VORTAC SAC 115.2 Chan 99	APP CRS 189°	Rwy ldg TDZE Apt Elev	N/A N/A 23
--	------------------------	-----------------------------	---------------------------------------

NA Use Travis AFB altimeter setting.	MISSED APPROACH: Climbing left turn to 3000 via SAC VORTAC R-178 to SAC VORTAC.
---	---

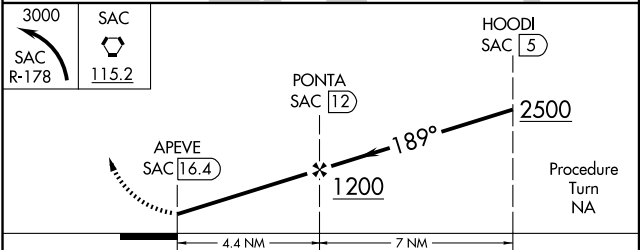
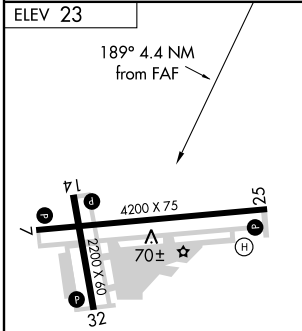
NORCAL APP CON 125.25 257.9	UNICOM 122.725 (CTAF)
---------------------------------------	---------------------------------



Procedure NA for arrivals on SAC VORTAC airway radials 137 CW 216.

SW-2, 22 OCT 2009 to 19 NOV 2009

SW-2, 22 OCT 2009 to 19 NOV 2009



CATEGORY	A	B	C	D
CIRCLING	560-1 537 (600-1)	580-1 557 (600-1)	620-1½ 597 (600-1½)	NA

RIO VISTA, CALIFORNIA
Amdt 1 09155

38°12'N - 121°42'W

RIO VISTA MUNI (O88)
VOR/DME-A