

EASTON, MARYLAND

AL-5596 (FAA)

WAAS CH 86905 W04A	APP CRS 040°	Rwy Idg 4775 TDZE 58 Apt Elev 72
--	------------------------	---

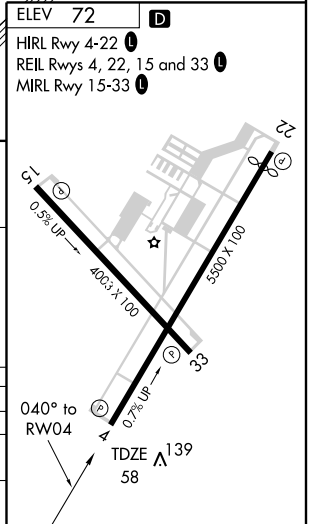
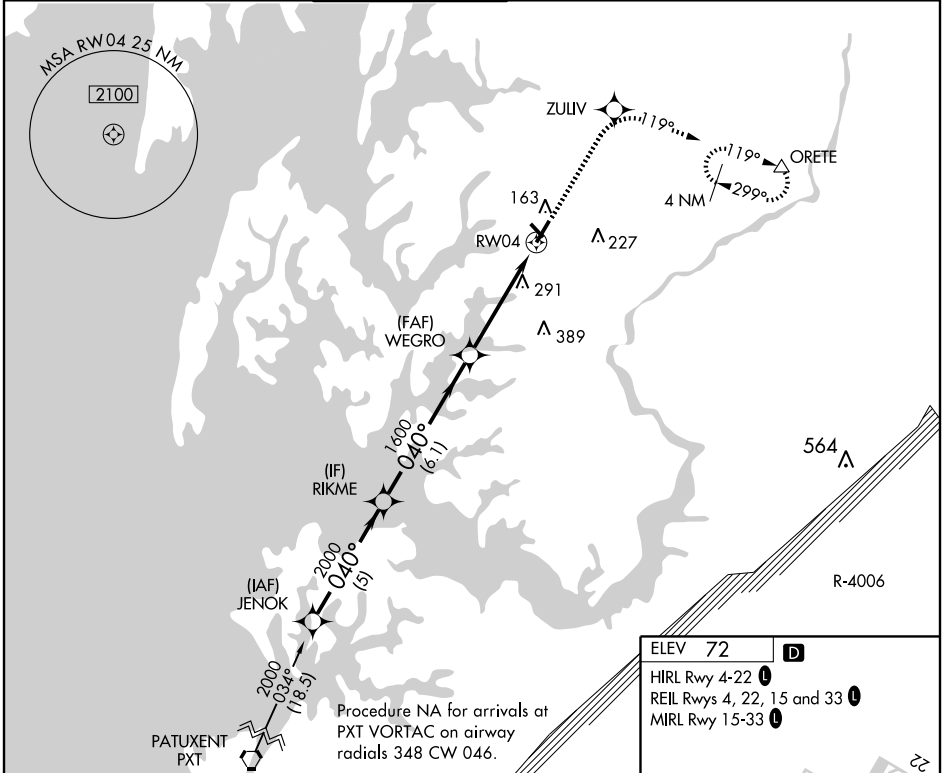
RNAV (GPS) RWY 4

EASTON/NEWNAM FIELD (ESN)

▼ DME/DME RNP-0.3 NA. If local altimeter setting not received, use Baltimore-Washington Intl Thurgood Marshall altimeter setting and increase DA to 358 feet and all MDAs 100 feet. VDP NA when using Baltimore Washington Intl Thurgood Marshall altimeter setting.

MISSED APPROACH: Climb to 2000 direct ZULIV and via 119° track to ORETE and hold.

ATIS 124.475	POTOMAC APP CON 124.55 317.425	EASTON TOWER ★ 118.525 (CTAF) 0	GND CON 119.075	CLNC DEL 119.075 126.9 (Tower closed)	UNICOM 122.95
------------------------	--	---	---------------------------	--	-------------------------



Procedure Turn NA	JENOK	RIKME	ZULIV	ORETE
	2000	2000	119° trk	△
GS 3.00° TCH 44	040°	040°	1600	
	5 NM	6.1 NM	3.1 NM	1.6 NM
CATEGORY	A	B	C	D
LPV DA		265-3/4	207 (200-3/4)	
RNAV MDA	600-1	542 (600-1)	600-1 1/2 542 (600-1 1/2)	600-1 1/4 542 (600-1 1/4)
CIRCLING	600-1	528 (600-1)	660-1 1/2 588 (600-1 1/2)	660-2 588 (600-2)

NE-3, 22 OCT 2009 to 19 NOV 2009

NE-3, 22 OCT 2009 to 19 NOV 2009

EASTON, MARYLAND
Orig 09295

38°48'N - 76°04'W

EASTON/NEWNAM FIELD (ESN)

RNAV (GPS) RWY 4