

EASTON, MARYLAND

AL-5596 (FAA)

RNAV (GPS) RWY 33

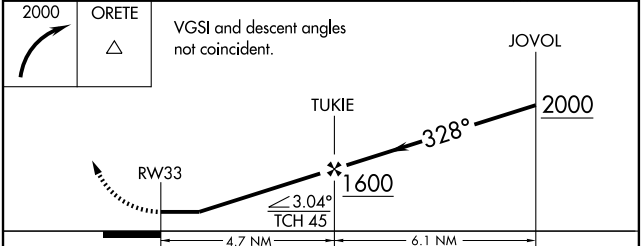
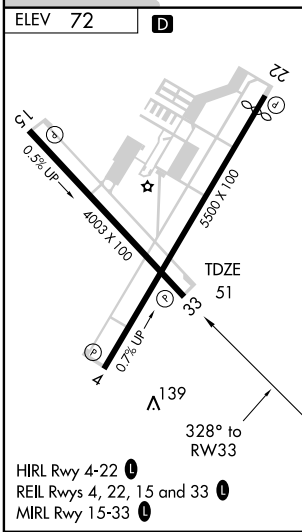
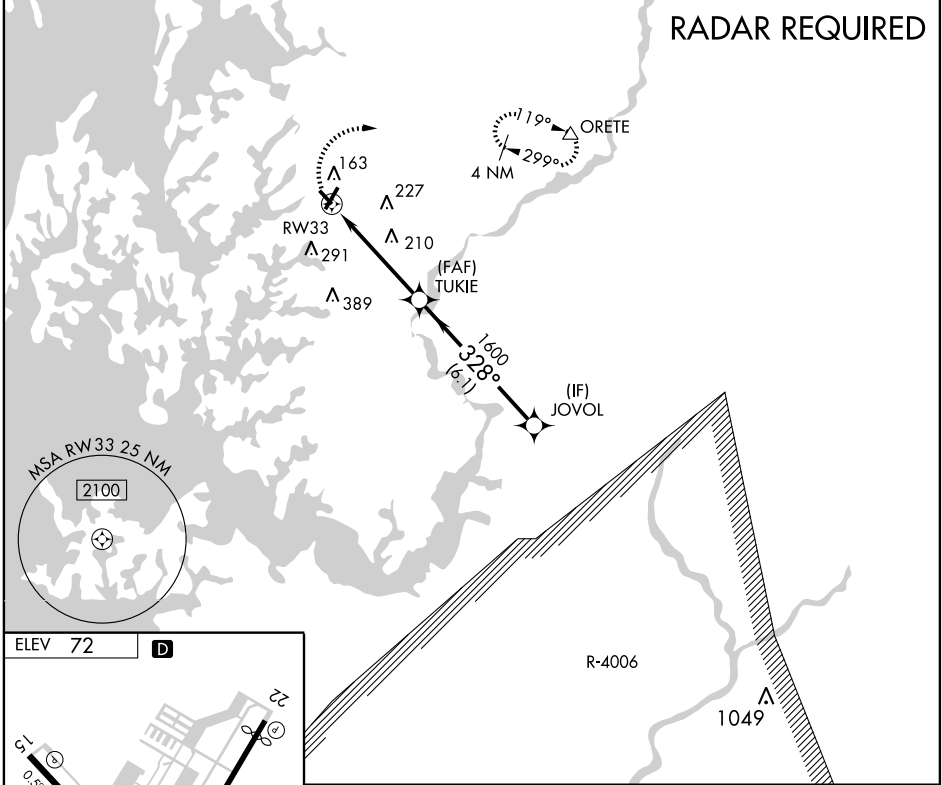
EASTON/NEWMAM FIELD (E/SN)

APP CRS 328°	Rwy Idg TDZE Apt Elev	4003 51 72
------------------------	-----------------------------	---------------------------------------

▽ DME/DME RNP-0.3 NA. Visibility reduction by helicopters NA.
▲ When local altimeter setting not received, use Baltimore-Washington Intl Thurgood Marshall altimeter setting and increase all MDA 100 feet, LNAV Cat C and D visibility ¼ mile, Circling Cat C visibility ½ mile and Cat D visibility ¼ mile.

MISSED APPROACH: Climbing right turn to 2000 direct ORETE and hold.

ATIS 124.475	POTOMAC APP CON 124.55 317.425	EASTON TOWER ★ 118.525 (CTAF) 0	GND CON 119.075	CLNC DEL 119.075 126.9 (Tower closed)	UNICOM 122.95
------------------------	--	--	---------------------------	---	-------------------------



CATEGORY	A	B	C	D
LNAV MDA	520-1	469 (500-1)	520-1¼ 469 (500-1¼)	520-1½ 469 (500-1½)
CIRCLING	520-1 448 (500-1)	540-1 468 (500-1)	660-1½ 588 (600-1½)	660-2 588 (600-2)

EASTON, MARYLAND
 Orig 09295

38°48'N - 76°04'W

EASTON/NEWMAM FIELD (E/SN)

RNAV (GPS) RWY 33

NE-3, 22 OCT 2009 to 19 NOV 2009

NE-3, 22 OCT 2009 to 19 NOV 2009