

EASTON, MARYLAND

AL-5596 (FAA)

WAAS CH <b>40207</b> <b>W22A</b>	APP CRS <b>221°</b>	Rwy Idg <b>5175</b> TDZE <b>72</b> Apt Elev <b>72</b>
--	------------------------	---

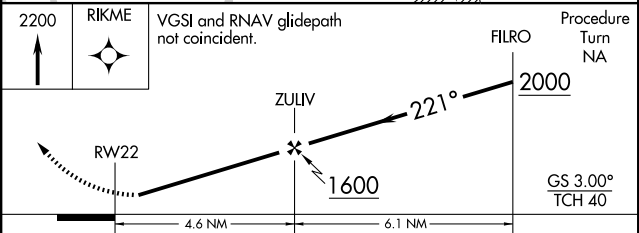
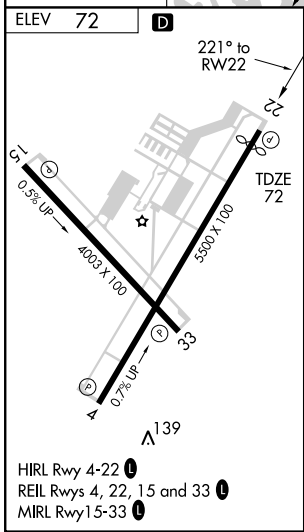
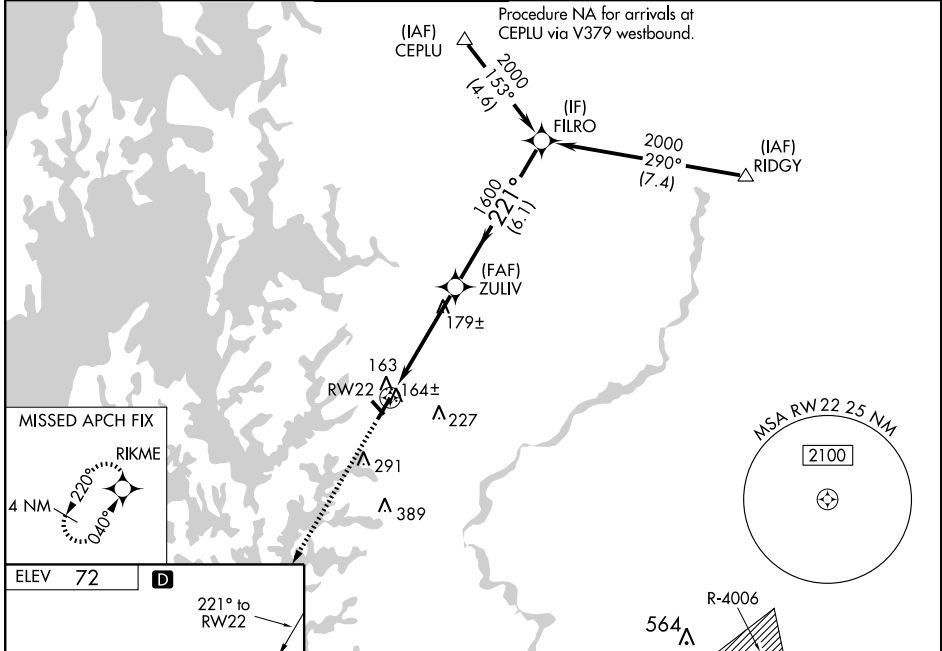
# RNAV (GPS) RWY 22

EASTON/NEWMAM FIELD (ESN)

**⚠** Baro-VNAV NA when using Baltimore-Washington Intl Thurgood Marshall altimeter setting.  
**⚠** When local altimeter setting not received, use Baltimore-Washington Intl Thurgood Marshall altimeter setting and increase all DA 93 feet, all MDA 100 feet, LPV and LNAV/VNAV all Cats visibility ¼ mile, LNAV Cats C and D visibility ¼ mile and Circling Cats C visibility ½ mile and Cat D visibility ¼ mile. For uncompensated Baro-VNAV systems, LNAV/VNAV NA below -15°C (5°F) or above 48°C (118°F). DME/DME RNP -0.3 NA. Visibility reduction by helicopters NA.

MISSED APPROACH: Climb to 2000 direct RIKME and hold.

ATIS <b>124.475</b>	POTOMAC APP CON <b>124.55 317.425</b>	EASTON TOWER ★ <b>118.525 (CTAF)</b>	GND CON <b>119.075</b>	CLNC DEL <b>119.075 126.9</b> (Tower closed)	UNICOM <b>122.95</b>
------------------------	--	---	---------------------------	--	-------------------------



CATEGORY	A	B	C	D
LPV DA		352-1	280 (300-1)	
LNAV/VNAV DA		434-1¼	362 (400-1¼)	
LNAV MDA		440-1	368 (400-1)	440-1¼ 368 (400-1¼)
CIRCLING	480-1 408 (500-1)	540-1 468 (500-1)	660-1½ 588 (600-1½)	660-2 588 (600-2)

EASTON, MARYLAND  
Orig 09295

38°48'N - 76°04'W

# EASTON/NEWMAM FIELD (ESN) RNAV (GPS) RWY 22

NE-3, 22 OCT 2009 to 19 NOV 2009

NE-3, 22 OCT 2009 to 19 NOV 2009