

COLUMBIA, MISSOURI

AL-5595 (FAA)

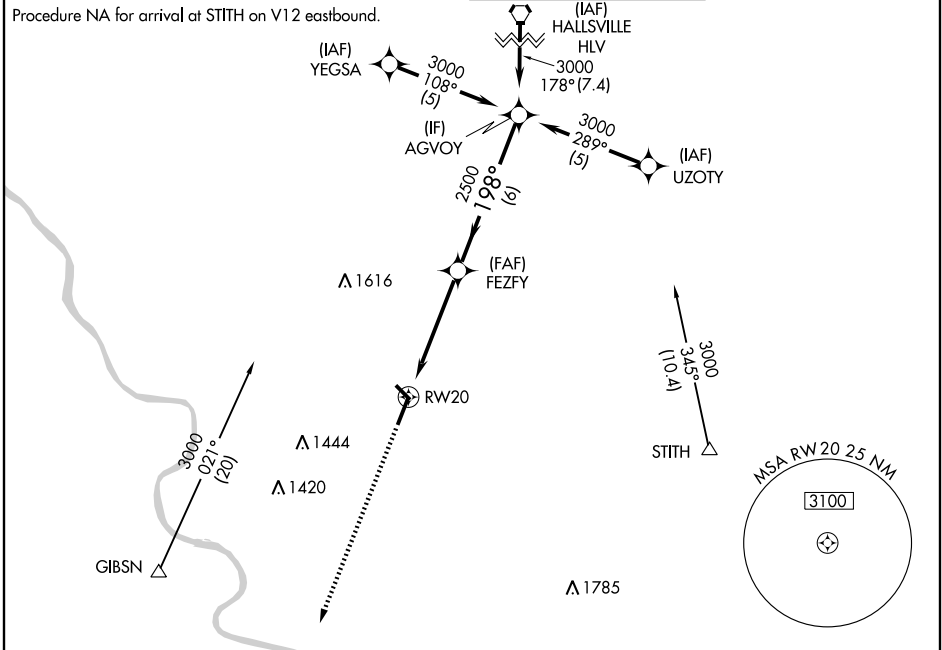
# RNAV (GPS) RWY 20

COLUMBIA RGNL (COU)

WAAS CH <b>93599</b> <b>W20A</b>	APP CRS <b>198°</b>	Rwy Idg TDZE Apt Elev	<b>6500</b> <b>889</b> <b>889</b>
--	------------------------	-----------------------------	---

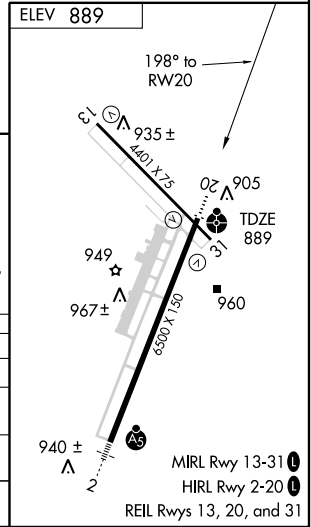
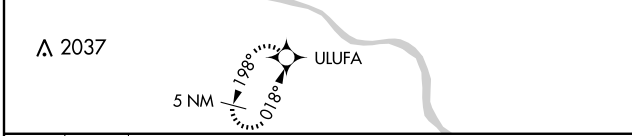
<p><b>▼</b> DME/DME RNP-0.3 NA. Baro-VNAV NA below -1.6°C (3°F). Inoperative table does not apply to LPV.</p>	<p>ODALS ●●●●●</p>	<p>MISSED APPROACH: Climb to 3000 direct ULUFA and hold.</p>
---	------------------------	--

<p>ATIS <b>128.45</b></p>	<p>MIZZU APP CON <b>124.375 353.7</b></p>	<p>COLUMBIA TOWER * <b>119.3 (CTAF) 0 363.25</b></p>	<p>GND CON <b>121.6</b></p>
-------------------------------	---	--	---------------------------------



NC-3, 22 OCT 2009 to 19 NOV 2009

NC-3, 22 OCT 2009 to 19 NOV 2009



<p>3000 ULUFA</p>	AGVOY				Procedure Turn NA
*LNAV only		*0.9 NM to RW20		GS 3.00° TCH 39	
CATEGORY	A	B	C	D	
LPV DA	1139-1			250 (300-1)	
LNAV/VNAV DA	1185- $\frac{3}{4}$	296 (300- $\frac{3}{4}$ )		1185-1 296 (300-1)	
LNAV MDA	1220- $\frac{3}{4}$	331 (400- $\frac{3}{4}$ )		1220-1 331 (400-1)	
CIRCLING	1280-1 391 (400-1)	1340-1 451 (500-1)	1340-1 $\frac{1}{2}$ 451 (500-1 $\frac{1}{2}$ )	1440-2 551 (600-2)	

COLUMBIA, MISSOURI  
Amdt 1 07298

38° 49' N-92° 13' W

# RNAV (GPS) RWY 20

COLUMBIA RGNL (COU)