


RNAV (GPS) RWY 2

COLUMBIA RGNL (COU)

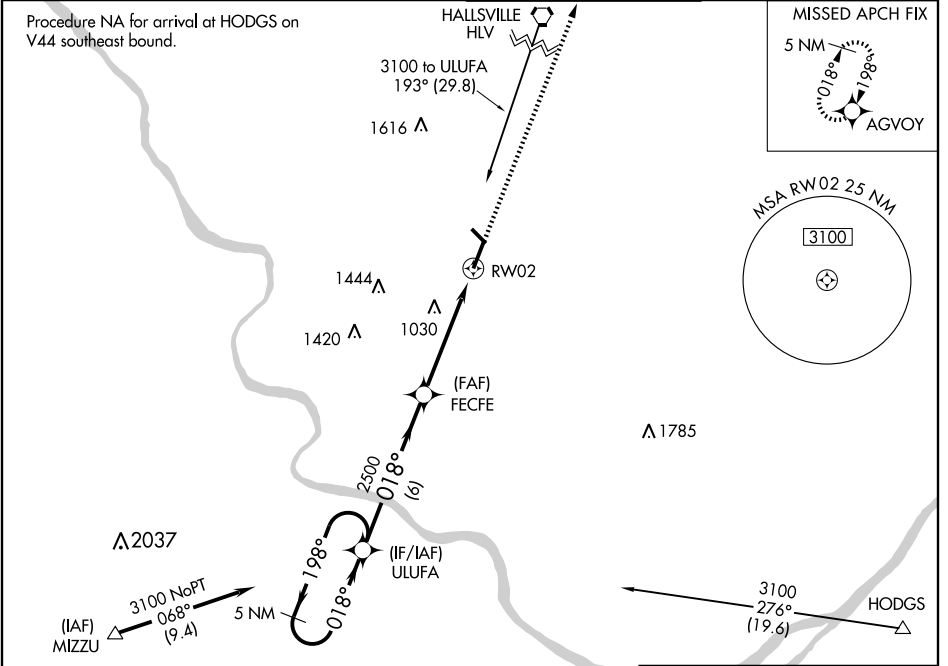
WAAS CH 77599 W02A	APP CRS 018°	Rwy Idg 6500 TDZE 889 Apt Elev 889
--	------------------------	---

▼ DME/DME RNP-0.3 NA. Baro-VNAV NA below -16°C (3°F). For inoperative MALSR, increase LPV all Cats visibility to RVR 5000, LNAV/VNAV Cat D visibility to RVR 5000, and LNAV Cat D visibility to RVR 6000.

MALSR 

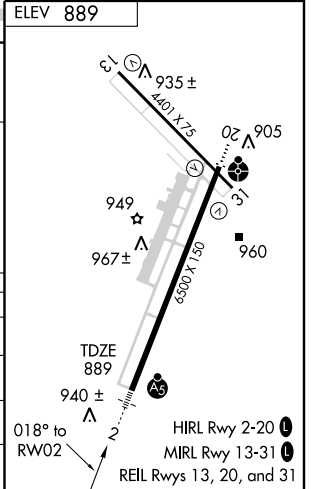
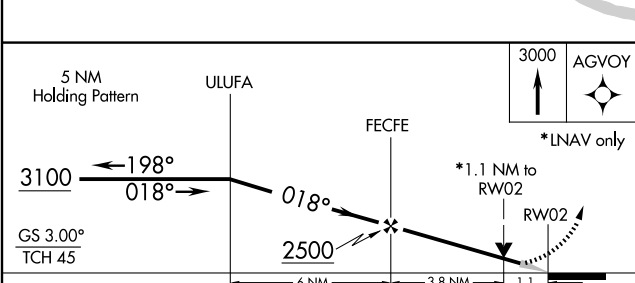
MISSED APPROACH: Climb to 3000 direct AGVOY and hold.

ATIS 128.45	MIZU APP CON 124.375 353.7	COLUMBIA TOWER* 119.3 (CTAF) 0 363.25	GND CON 121.6
-----------------------	--------------------------------------	--	-------------------------



NC-3, 22 OCT 2009 to 19 NOV 2009

NC-3, 22 OCT 2009 to 19 NOV 2009



CATEGORY	A	B	C	D
LPV DA	1139/24 250 (300-½)			
LNAV/VNAV DA	1190/24 301 (400-½)		1190/40 301 (400-¾)	
LNAV MDA	1280/24 391 (400-½)		1280/50 391 (400-1)	
CIRCLING	1280-1 391 (400-1)	1340-1 451 (500-1)	1340-1½ 451 (500-1½)	1440-2 551 (600-2)