

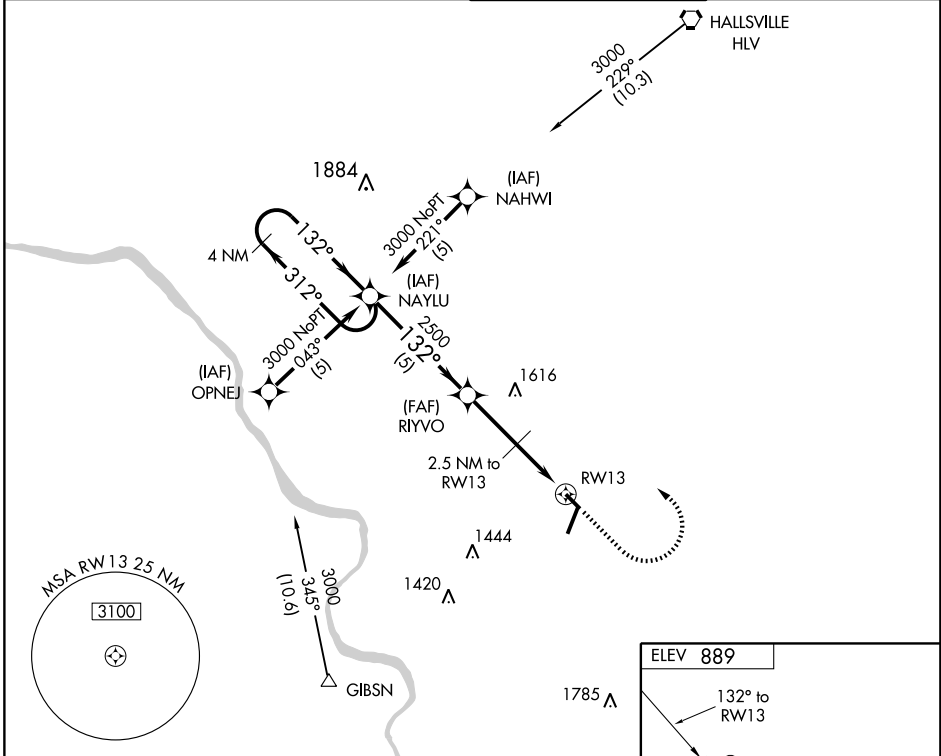
RNAV (GPS) RWY 13

COLUMBIA RGNL (COU)

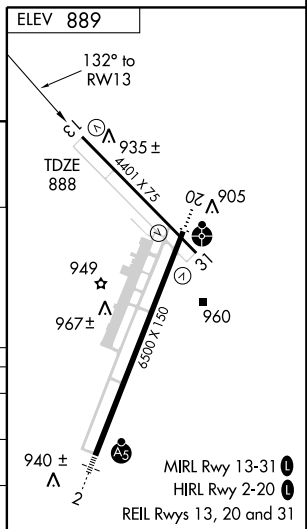
APP CRS 132°	Rwy Idg 4401
	TDZE 888
	Apt Elev 889

<p>▽ GPS or RNP-0.3 required.</p> <p>△ NA DME/DME RNP-0.3 NA.</p>	<p>MISSED APPROACH: Climb to 2000 then climbing left turn to 3000 direct NAYLU WP and hold.</p>
---	---

<p>ATIS 128.45</p>	<p>MIZZU APP CON 124.375 353.7</p>	<p>COLUMBIA TOWER * 119.3 (CTAF) 0 363.25</p>	<p>GND CON 121.6</p>
-------------------------------	---	--	---------------------------------



4 NM Holding Pattern	NAYLU				2000	3000	NAYLU
	<p>3000 ← 312°</p> <p>→ 132°</p>				<p>RIYVO</p> <p>2.5 NM to RWY 13</p> <p>3.57°</p> <p>TCH 45</p> <p>1880</p>		
<p>VGSI and descent angles not coincident.</p>							
← 5 NM				← 2.5 NM		← 2.5 NM	
CATEGORY	A	B	C	D			
LNAV/VNAV DA	NA						
LNAV MDA	1200-1 312 (400-1)						
CIRCLING	1300-1 411 (500-1)	1340-1 451 (500-1)	1340-1½ 451 (500-1½)	1440-2 551 (600-2)			



NC-3, 22 OCT 2009 to 19 NOV 2009

NC-3, 22 OCT 2009 to 19 NOV 2009