

# LOC/DME BC RWY 20

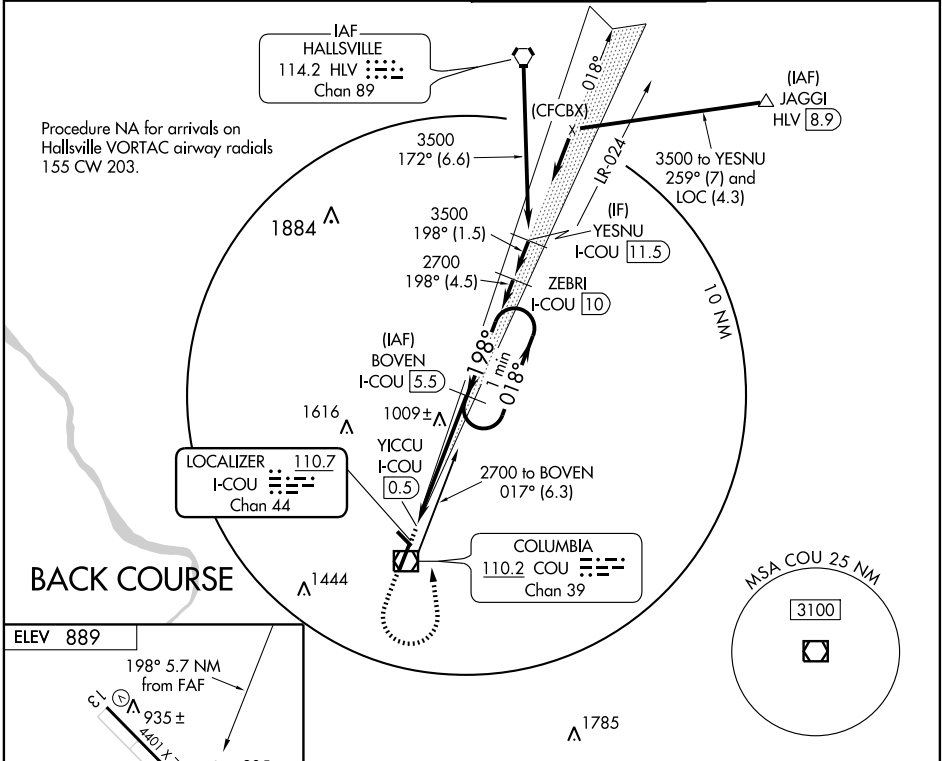
COLUMBIA RGNL (COU)

LOC/DME I-COU <b>110.7</b> Chan 44	APP CRS <b>198°</b>	Rwy Idg TDZE Apt Elev	<b>6500</b> <b>889</b> <b>889</b>
--	------------------------	-----------------------------	---

**▼** When local altimeter setting not received, use Jefferson City altimeter setting and increase all MDA 80 feet and increase visibility S-LOC 20 Cat C ½ mile and Cat D ¼ mile.

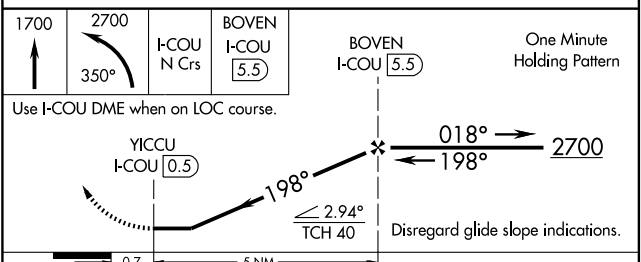
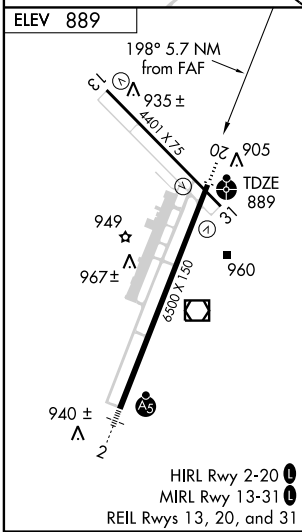
**▲** **ODALS** MISSED APPROACH: Climb to 1700 then climbing left turn to 2700 via heading 350° and I-COU north course to BOVEN/I-COU 5.5 DME and hold.

ATIS <b>128.45</b>	MIZZU APP CON <b>124.375 353.7</b>	COLUMBIA TOWER ★ <b>119.3 (CTAF) 363.25</b>	GND CON <b>121.6</b>
-----------------------	---------------------------------------	--	-------------------------



NC-3, 22 OCT 2009 to 19 NOV 2009

NC-3, 22 OCT 2009 to 19 NOV 2009



CATEGORY	A	B	C	D
S-20	1260-¾ 371 (400-¾)			1260-1¼ 371 (400-1¼)
CIRCLING	1300-1 411 (500-1)	1340-1 451 (500-1)	1340-1½ 451 (500-1½)	1440-2 551 (600-2)