

VORTAC PVD 115.6 Chan 103	APP CRS 164°	Rwy Idg TDZE 162 Apt Elev 172	2623
---	------------------------	---	-------------

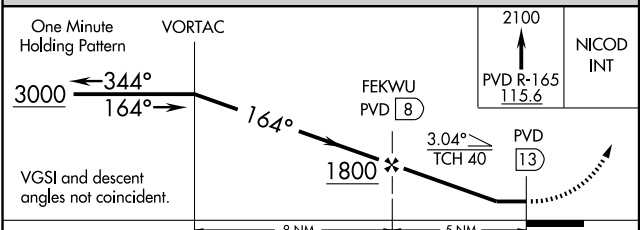
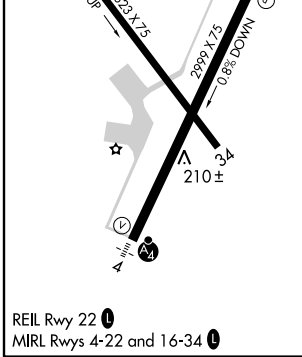
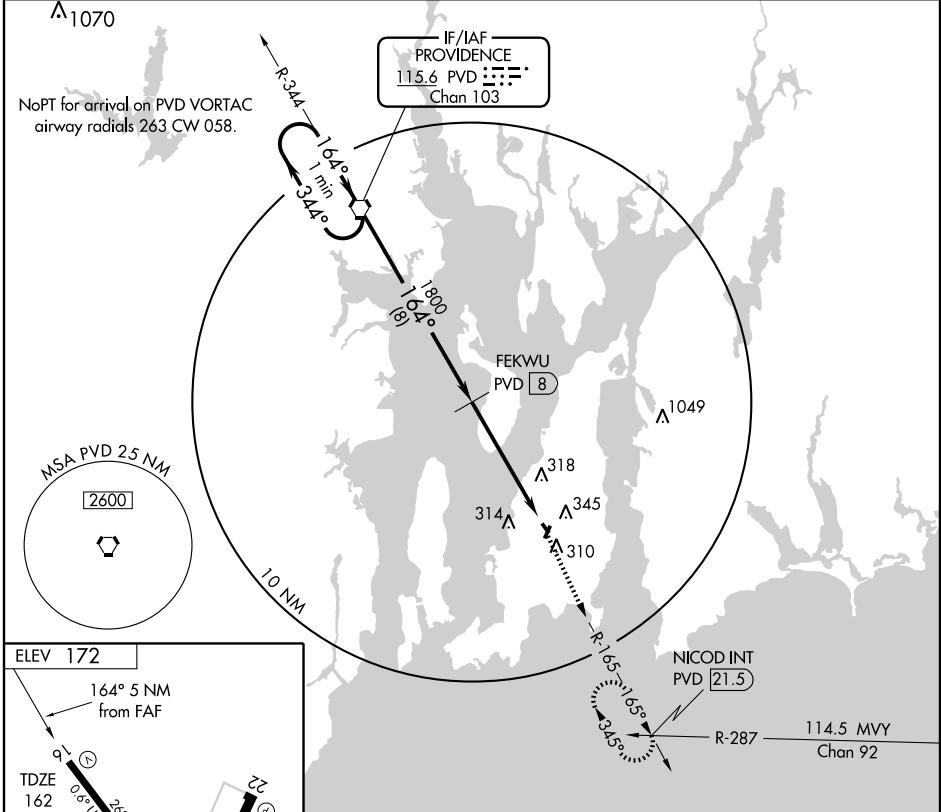
VOR/DME RWY 16

NEWPORT STATE (UUU)

⚠ When local altimeter setting not received, use Providence altimeter setting and increase all MDAs 60 feet. Visibility reduction by helicopters NA.

MISSED APPROACH: Climb to 2100 via PVD R-165 to NICOD INT/21.5 DME and hold.

ASOS 132.075	PROVIDENCE APP CON * 128.7 269.525	CLNC DEL 127.25	UNICOM 122.8 (CTAF) 📻
------------------------	--	---------------------------	--



CATEGORY	A	B	C	D
S-16	680-1	518 (600-1)	680-1½ 518 (600-1½)	NA
CIRCLING	700-1	528 (600-1)	700-1½ 528 (600-1½)	NA

NE-1, 22 OCT 2009 to 19 NOV 2009

NE-1, 22 OCT 2009 to 19 NOV 2009