

RNAV (GPS) RWY 16

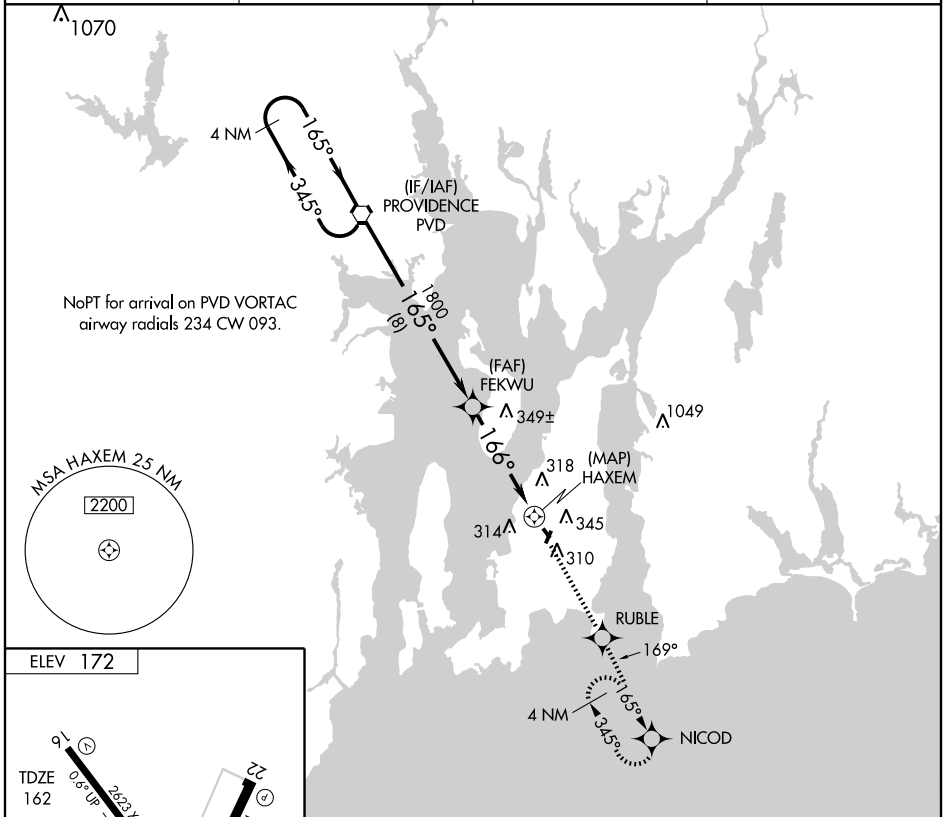
NEWPORT STATE (UUU)

APP CRS 166°	Rwy Idg 2623
	TDZE 162
	Apt Elev 172

⚠ When local altimeter setting not received, use Providence altimeter setting and increase all MDAs 60 feet. VDP NA with Providence altimeter setting. Visibility reduction by helicopters NA. DME/DME RNP-0.3 NA.

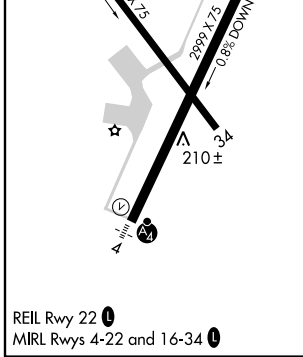
⚠ MISSED APPROACH: Climb to 2100 direct RUBLE and via 169° track to NICOD and hold.

ASOS 132.075	PROVIDENCE APP CON * 128.7 269.525	CLNC DEL 127.25	UNICOM 122.8 (CTAF)
------------------------	--	---------------------------	-------------------------------



NE-1, 22 OCT 2009 to 19 NOV 2009

NE-1, 22 OCT 2009 to 19 NOV 2009



4 NM Holding Pattern	PVD VORTAC	2100	RUBLE	169° track	NICOD
3000	← 345°	↑	◆	◆	◆
	165° →				
VGSI and descent angles not coincident.	165°				
	FEKWU	3.04°	TCH 40	HAXEM	
	1800				
	166°				
	8 NM	4.5 NM	0.5		
CATEGORY	A	B	C	D	
LNAV MDA	600-1	438 (500-1)	600-1¼ 438 (500-1¼)	NA	
CIRCLING	700-1	528 (600-1)	700-1½ 528 (600-1½)	NA	